

**IN THE MATTER OF THE *ENVIRONMENTAL ASSESSMENT ACT*
S.B.C. 2018, c.51 (the Act)**

AND

**IN THE MATTER OF ENVIRONMENTAL ASSESSMENT CERTIFICATE # E16-01
HELD BY FORTISBC ENERGY INC**

**FOR THE
EAGLE MOUNTAIN – WOODFIBRE GAS PIPELINE PROJECT**

**AMENDMENT # 1 (AMENDMENT)
TO CERTIFICATE # E16-01**

WHEREAS:

- A. On August 9, 2016, the Minister of Environment and the Minister of Natural Gas Development issued Environmental Assessment Certificate # E16-01 (Certificate) to FortisBC Energy Inc. (FortisBC).
- B. The Certificate authorized FortisBC to construct and operate the Eagle Mountain – Woodfibre Gas Pipeline Project, southwest of Squamish.
- C. On August 5, 2021, the Chief Executive Assessment Officer extended the deadline in the Certificate by which the Eagle Mountain – Woodfibre Gas Pipeline Project must be substantially started to August 9, 2026.
- D. On March 3, 2020, FortisBC requested a three-kilometre (km) pipeline length addition, an expansion of the certified pipeline corridor, the relocation of the Squamish Compressor Station (Mount Mulligan), and an increase in capacity to the Eagle Mountain Compressor Station under Section 32(1) of the Act.
- E. Pursuant to Section 4 of the Act, the Chief Executive Assessment Officer has delegated to the undersigned, powers and duties under the Act, including the power to consider requests for certificate amendments.

NOW THEREFORE,

I amend the Certificate as follows:

- 1. Mapsheets 1 to 9 in APPENDIX A: CERTIFIED PROJECT DESCRIPTION MAPBOOK are rescinded and replaced with Mapsheets 1 to 10 attached to this amendment.
- 2. Paragraph one of section 1 “Project Overview” of the Certified Project Description is amended from:
“near Hixon Creek, BC (E 513023, N 5485214) to Woodfibre, BC (E 481978, N 5502029) (Mapsheets 1 to 9)”

to:

“the existing Eagle Mountain Compressor Station in Coquitlam, BC (E 513814, N 5462536) to Woodfibre, BC (E 482031, N 5501890) (Mapsheets 1 to 10)”.

3. Under Section 3 “Compressor Stations” of the Certified Project Description

3.1. The following text is amended from:

- “Up to three gas fired turbine compressor units at Mount Mulligan compressor station; and
- A permanent access road to the Mount Mulligan compressor station.”

to:

- Either of the following two options may be constructed, but not both:
 - Option 1: up to three gas fired turbine compressor units at Mount Mulligan compressor station, including a permanent access road to the Mount Mulligan compressor station; or
 - Option 2: up to two gas fired turbine, or EMD, compressor units at the Squamish compressor station.

3.2. Paragraph two is amended to remove reference to Mapsheet 6 and add Mapsheets 7, 9 and 10.

3.3. The following text is added: If Option 2 is selected, a portion of the existing NPS 10 pipeline is relocated and a lateral NPS 10 pipeline and electric powerline are added to the Squamish compressor station.

3.4 Table 1 is amended as follows:

- “20,500” is replaced with 26,000, in row one, column two
- Adding Option 1, to row two, column one
- Adding row three, column one: Option 2: Squamish Compressor Station (3 ha)
- Adding row three, column two: Up to two 6,300 HP natural gas-fired turbine or EMD compressor units.

4. Under Section 4 “ELECTRICAL SUBSTATIONS AND TRANSMISSION LINES” of the Certified Project Description

4.1. The title, “ELECTRICAL SUBSTATIONS AND TRANSMISSION LINES” is replaced with: ELECTRICAL SUBSTATIONS AND TRANSMISSION DISTRIBUTION LINES

4.2. The following text is added to the end of the first paragraph: and electrical distribution lines to support the Squamish compressor station at the Woodfibre LNG site (Option 2).

4.3. Paragraph two is amended from:

“The location of the electrical substation and transmission lines are within the Certified Electrical Transmission Line Corridor on Mapsheet 8 (Appendix A).”

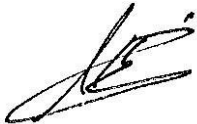
to:

The location of the electrical substation and transmission lines for the Eagle Mountain compressor station are within the Certified Electrical Transmission Line Corridor on Mapsheet 9 and 10 (Appendix A). The location of the electrical distribution line for the Squamish compressor station (Option 2) is within the Certified Compressor Station Area on Mapsheet 7 and 8 (Appendix A).

4.4. The following text is added to the end of the third paragraph: and electrical distribution lines at the Squamish compressor station (Option 2):

4.5. The following bullet is added to the end of the bulleted list:

- Up to one electrical distribution line (25 kV) to supply power to the Squamish compressor station (Option 2) from the Woodfibre LNG project electrical substation.



Scott Bailey
Deputy Chief Executive Assessment Officer
Environmental Assessment Office

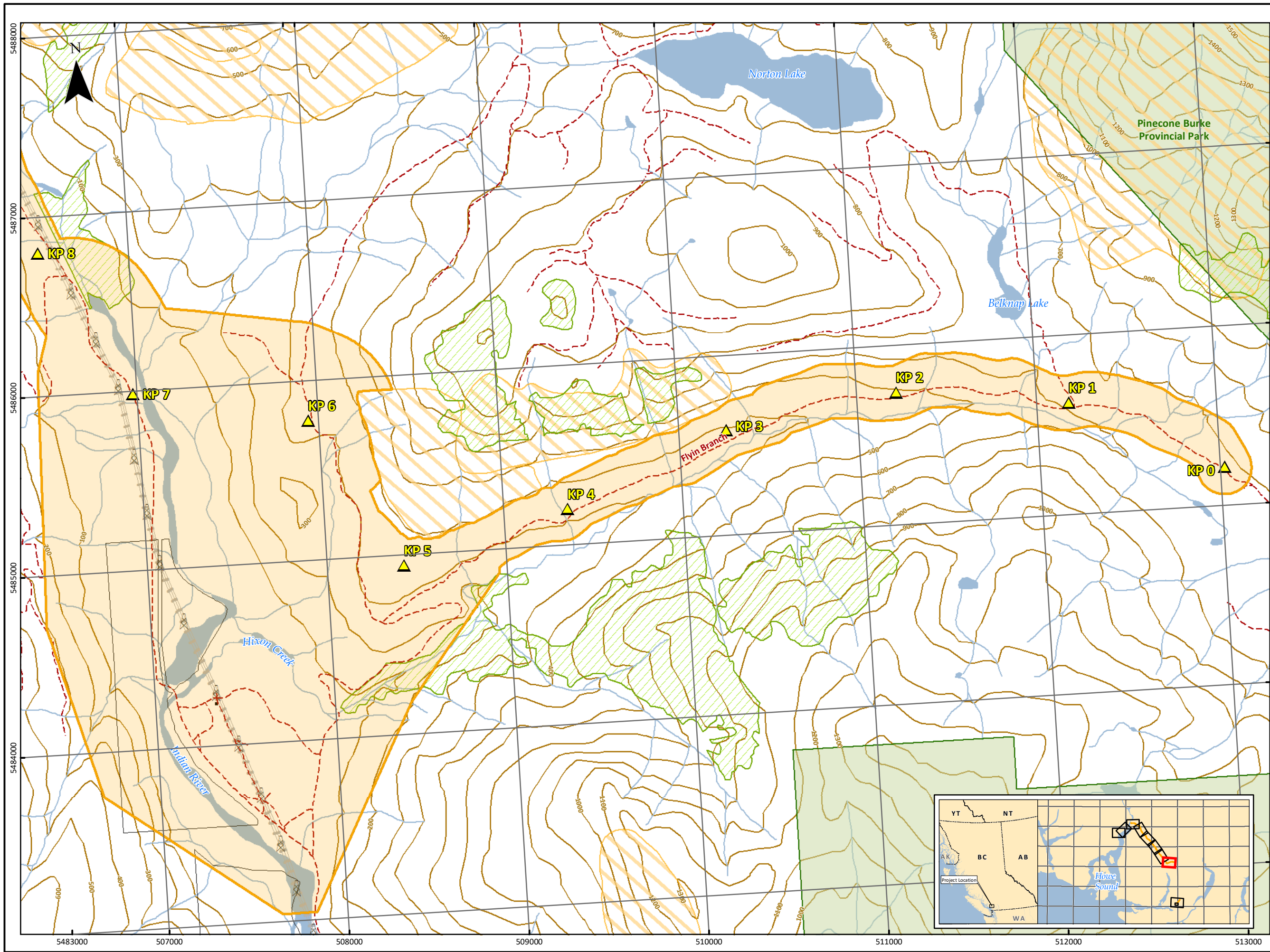
Issued this 22nd day of November 2021

SCHEDULE A

CERTIFIED PROJECT DESCRIPTION MAPSHEETS FOR AMENDMENT #1
FOR THE

EAGLE MOUNTAIN – WOODFIBRE GAS PIPELINE PROJECT (PROJECT)

ENVIRONMENTAL ASSESSMENT CERTIFICATE # E16-01



July 2021

MAPSHEET 1 OF 10

CERTIFIED
PIPELINE CORRIDOR

EAGLE MOUNTAIN-WOODFIBRE
GAS PIPELINE PROJECT

Kilometre Post

Certified Pipeline Corridor

Certified Compressor Station Area

Certified Electrical Transmission Line Corridor

Existing NPS10 to be Abandoned or Decommissioned

Highway

Road

Resource Road

Railway

Elevation Contour (100 m)

Watercourse

Waterbody

Wetland

Transmission Tower

Transmission Line

Building

Builtup Area

Private Parcel

Agricultural Land Reserve

Wildlife Habitat Area

Old Growth Management Area (Legal)

Ungulate Winter Range

Municipality

Regional District

Wildlife Management Area (WMA)

Park/Protected Area

First Nations Reserve

SCALE: 1:20,000

0200400600800

metres

(All Locations Approximate)

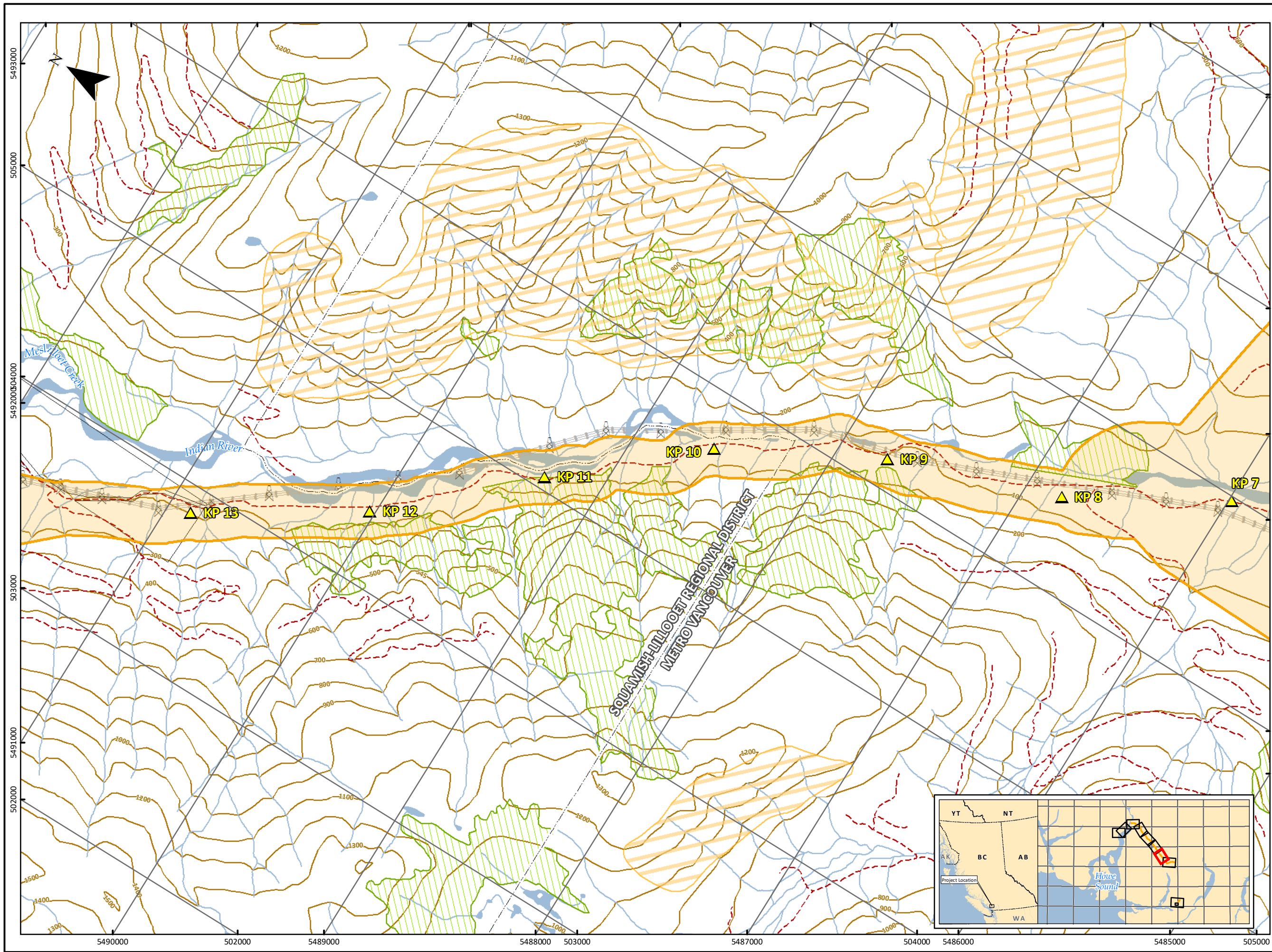
BCGS Mapsheet: 92G.046 / 92G.056

UTM Zone 10 North, NAD 1983.

KPs: Universal Pegasus International (UPI) 08-21-2014 (1017) and UPI 5-21-2021 (4002); Certified Corridor for EGP Pipeline: Jacobs 8-30-2019 (Revision 15); Squamish Compressor Station Siting Area: Jacobs 5-28-2020; Mt. Mulligan Compressor Station Siting Area: Jacobs 8-04-2015; Eagle Mountain Compressor Station Area: McElhenny Associates Land Surveying Ltd 10-16-2014; Certified Electrical Transmission Corridor: CH2M 7-30-2014; V1 Transmission: DBS Energy Inc 06-04-2014; Existing Transmission Lines: BC Hydro 03-24-2014; Roads: BC MFLNRO 2012; Hydrography: BC MFLNRO 2008; Municipalities: BC MFLNRO 2007; Parks, Wildlife Management Areas: BC MFLNRO 2008; Wildlife Habitat Areas, Ungulate Winter Range: BC MOE 2005; Old Growth Management Areas: BC FLNRO 2009; First Nations Reserves: Government of Canada 2016; Agricultural Land Reserves: Agricultural Land Commission 2015; Private Parcels: Integrated Cadastral Information Society (ICIS) 03-26-2014; British Columbia Geographic System (BCGS) Grid: BC MFLNRO 2003; Railways, Base Mapping: Government of British Columbia TRIM 2005-2007.

Although there is no reason to believe that there are any errors associated with the data used to generate this product or in the product itself, users of these data are advised that errors in the data may be present.

Produced By: Jacobs



July 2021

MAPSHEET 2 OF 10

CERTIFIED
PIPELINE CORRIDOR

EAGLE MOUNTAIN-WOODFIBRE
GAS PIPELINE PROJECT

Kilometre Post

Certified Pipeline Corridor

Certified Compressor Station Area

Certified Electrical Transmission
Line Corridor

Existing NPS10 to be Abandoned
or Decommissioned

Highway

Road

Resource Road

Railway

Elevation Contour (100 m)

Watercourse

Waterbody

Wetland

Transmission Tower

Transmission Line

Building

Builtup Area

Private Parcel

Agricultural Land Reserve

Wildlife Habitat Area

Old Growth Management Area
(Legal)

Ungulate Winter Range

Municipality

Regional District

Wildlife Management Area (WMA)

Park/Protected Area

First Nations Reserve

SCALE: 1:20,000

0200400600800

metres

(All Locations Approximate)

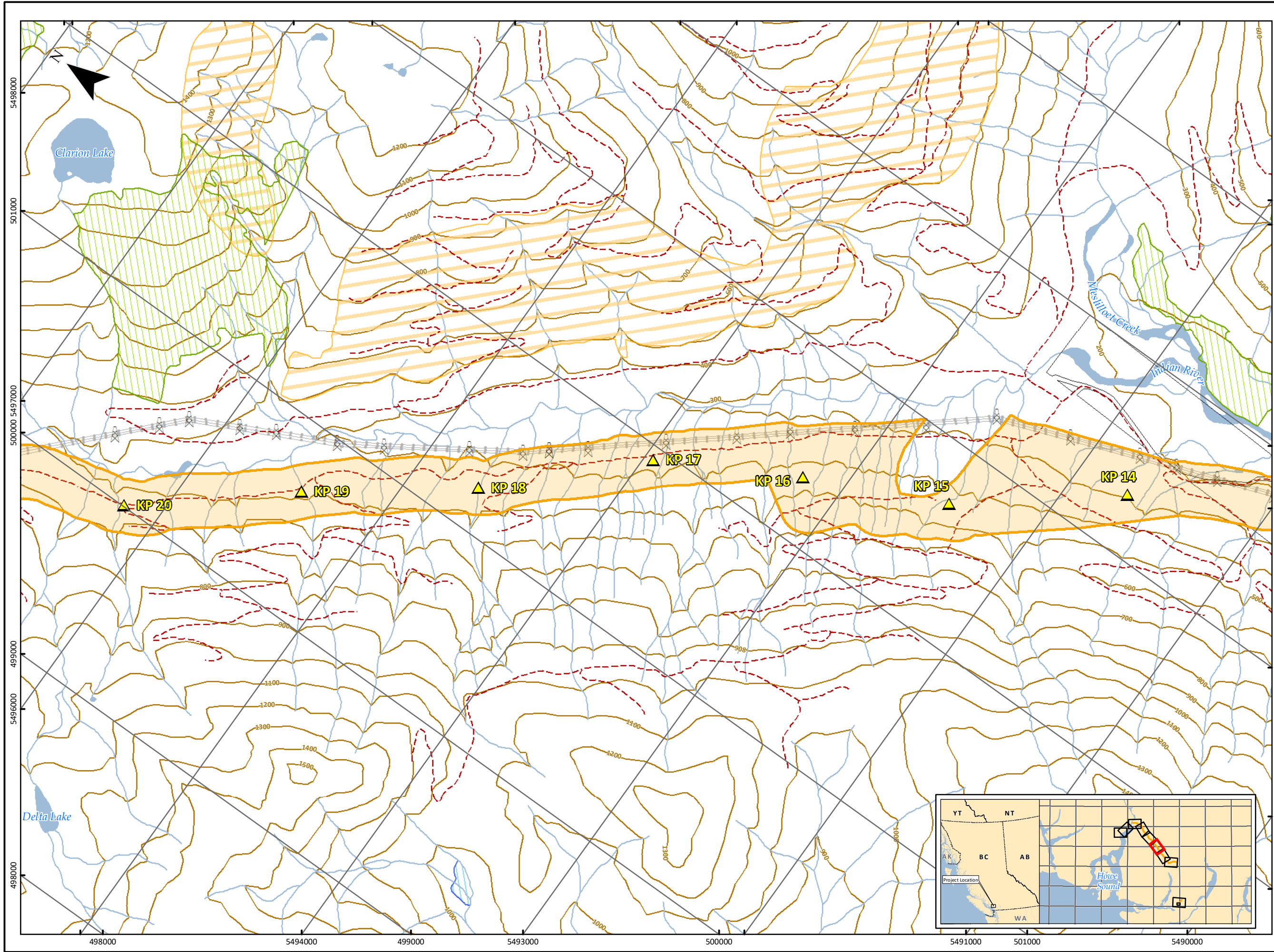
BCGS Mapsheet: 92G.056

UTM Zone 10 North, NAD 1983.

KPs: Universal Pegasus International (UPI) 08-21-2014 (1017) and UPI 5-21-2021 (4002); Certified Corridor for EGP Pipeline: Jacobs 8-30-2019 (Revision 15); Squamish Compressor Station Siting Area: Jacobs 5-28-2020; Mt Mulligan Compressor Station Siting Area: Jacobs 8-04-2015; Eagle Mountain Compressor Station Area: McElhenny Associates Land Surveying Ltd 10-16-2014; Certified Electrical Transmission Corridor: CH2M 7-30-2014; V1 Transmission: DBS Energy Inc 06-04-2014; Existing Transmission Lines: BC Hydro 03-24-2014; Roads: BC MFLNRO 2012; Hydrography: BC MFLNRO 2008; Municipalities: BC MFLNRO 2007; Parks, Wildlife Management Areas: BC MFLNRO 2008; Wildlife Habitat Areas, Ungulate Winter Range: BC MOE 2005; Old Growth Management Areas: BC FLNRO 2009; First Nations Reserves: Government of Canada 2016; Agricultural Land Reserves: Agricultural Land Commission 2015; Private Parcels: Integrated Cadastral Information Society (ICIS) 03-26-2014; British Columbia Geographic System (BCGS) Grid: BC MFLNRO 2003; Railways, Base Mapping: Government of British Columbia TRIM 2005-2007.

Although there is no reason to believe that there are any errors associated with the data used to generate this product or in the product itself, users of these data are advised that errors in the data may be present.

Produced By: Jacobs



July 2021

MAPSHEET 3 OF 10

**CERTIFIED
PIPELINE CORRIDOR**

**EAGLE MOUNTAIN-WOODFIBRE
GAS PIPELINE PROJECT**

Kilometre Post

Certified Pipeline Corridor

Certified Compressor Station Area

Certified Electrical Transmission
Line Corridor

Existing NPS10 to be Abandoned
or Decommissioned

Highway

Road

Resource Road

Railway

Elevation Contour (100 m)

Watercourse

Waterbody

Wetland

Transmission Tower

Transmission Line

Building

Builtup Area

Private Parcel

Agricultural Land Reserve

Wildlife Habitat Area

Old Growth Management Area
(Legal)

Ungulate Winter Range

Municipality

Regional District

Wildlife Management Area (WMA)

Park/Protected Area

First Nations Reserve

SCALE: 1:20,000

0200400600800

metres

(All Locations Approximate)

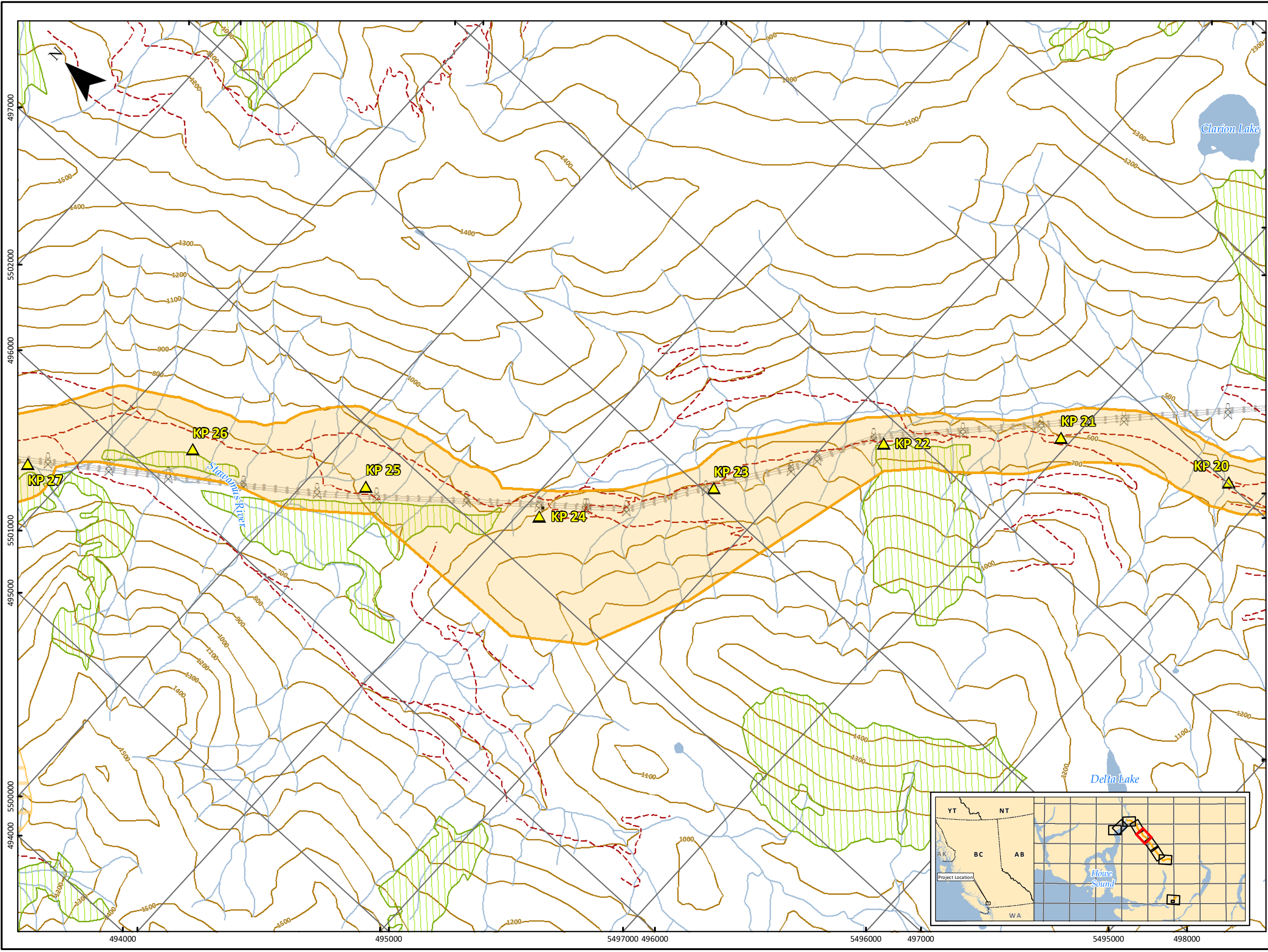
BCGS Mapsheet: 92G.056 / 92G.065 / 92G.066

UTM Zone 10 North, NAD 1983.

KPs: Universal Pegasus International (UPI) 08-21-2014 (1017) and UPI 5-21-2021 (4002); Certified Corridor for EGP Pipeline: Jacobs 8-30-2019 (Revision 15); Squamish Compressor Station Siting Area: Jacobs 5-28-2020; Mt Mulligan Compressor Station Siting Area: Jacobs 8-04-2015; Eagle Mountain Compressor Station Area: McElhenny Associates Land Surveying Ltd 10-16-2014; Certified Electrical Transmission Corridor: CH2M 7-30-2014; V1 Transmission: DBS Energy Inc 06-04-2014; Existing Transmission Lines: BC Hydro 03-24-2014; Roads: BC MFLNRO 2012; Hydrography: BC MFLNRO 2008; Municipalities: BC MFLNRO 2007; Parks, Wildlife Management Areas: BC MFLNRO 2008; Wildlife Habitat Areas, Ungulate Winter Range: BC MOE 2005; Old Growth Management Areas: BC FLNRO 2009; First Nations Reserves: Government of Canada 2016; Agricultural Land Reserves: Agricultural Land Commission 2015; Private Parcels: Integrated Cadastral Information Society (ICIS) 03-26-2014; British Columbia Geographic System (BCGS) Grid: BC MFLNRO 2003; Railways, Base Mapping: Government of British Columbia TRIM 2005-2007.

Although there is no reason to believe that there are any errors associated with the data used to generate this product or in the product itself, users of these data are advised that errors in the data may be present.

Produced By: Jacobs



July 2021

MAPSHEET 4 OF 10

**CERTIFIED
PIPELINE CORRIDOR**

**EAGLE MOUNTAIN-WOODFIBRE
GAS PIPELINE PROJECT**

- Kilometre Post
- Certified Pipeline Corridor
- Certified Compressor Station Area
- Certified Electrical Transmission Line Corridor
- Existing NPS10 to be Abandoned or Decommissioned
- Highway
- Road
- Resource Road
- Railway
- Elevation Contour (100 m)
- Watercourse
- Waterbody
- Wetland
- Transmission Tower
- Transmission Line
- Building
- Builtup Area
- Private Parcel
- Agricultural Land Reserve
- Wildlife Habitat Area
- Old Growth Management Area (Legal)
- Ungulate Winter Range
- Municipality
- Regional District
- Wildlife Management Area (WMA)
- Park/Protected Area
- First Nations Reserve

SCALE: 1:20,000

0 200 400 600 800 metres

(All Locations Approximate)

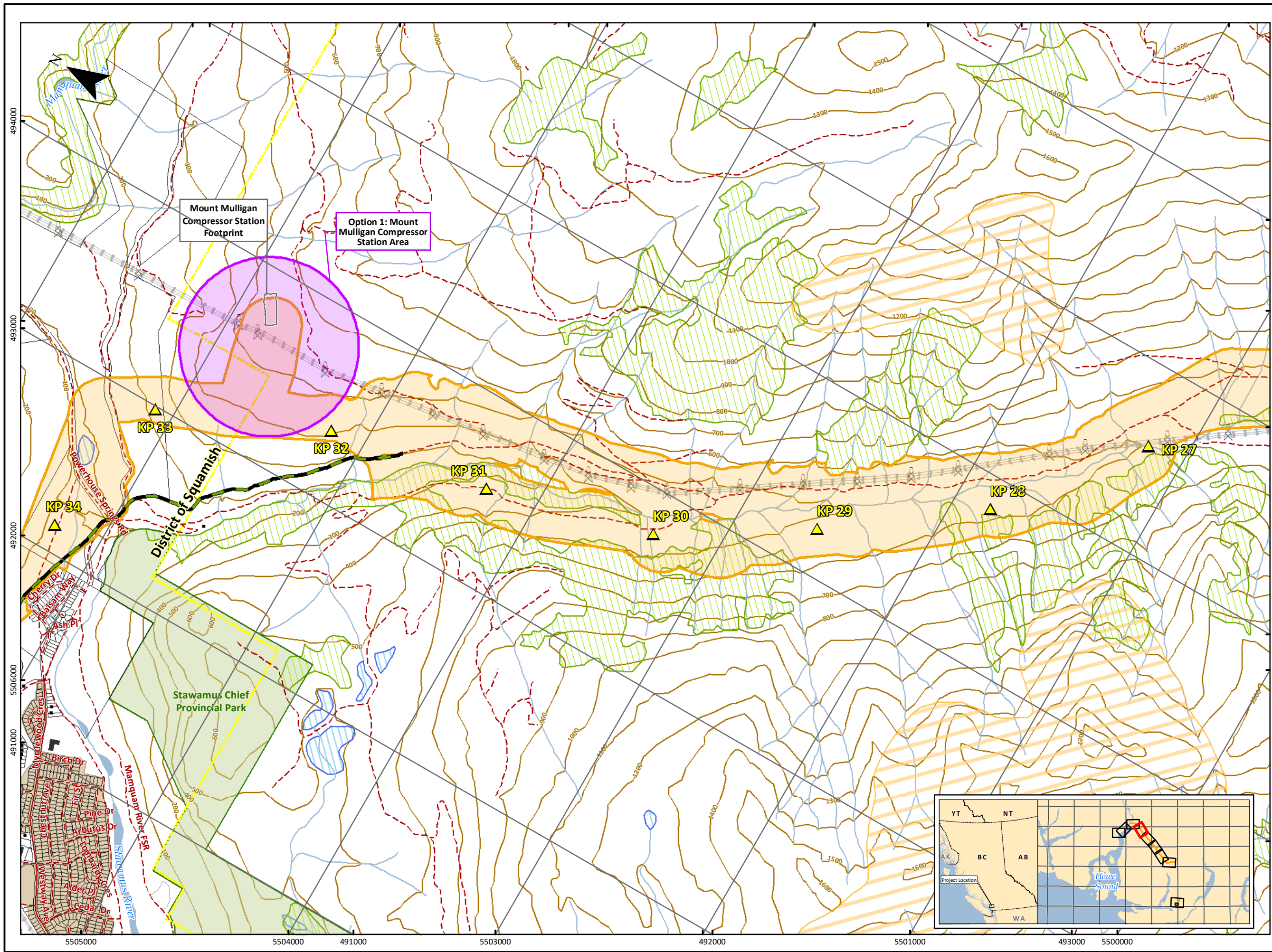
BCGS Mapsheet: 92G.065 / 92G.066

UTM Zone 10 North, NAD 1983.

KPs: Universal Pegasus International (UPI) 08-21-2014 (1017) and UPI 5-21-2021 (4002); Certified Corridor for EGP Pipeline: Jacobs 8-30-2019 (Revision 15); Squamish Compressor Station Siting Area: Jacobs 5-28-2020; Mt Mulligan Compressor Station Siting Area: Jacobs 8-04-2015; Eagle Mountain Compressor Station Area: McElhenny Associates Land Surveying Ltd 10-16-2014; Certified Electrical Transmission Corridor: CH2M 7-30-2014; V1 Transmission: DBS Energy Inc 06-04-2014; Existing Transmission Lines: BC Hydro 03-24-2014; Roads: BC MFLNRO 2012; Hydrography: BC MFLNRO 2008; Municipalities: BC MFLNRO 2007; Parks, Wildlife Management Areas: BC MFLNRO 2008; Wildlife Habitat Areas, Ungulate Winter Range: BC MOE 2005; Old Growth Management Areas: BC FLNRO 2009; First Nations Reserves: Government of Canada 2016; Agricultural Land Reserves: Agricultural Land Commission 2015; Private Parcels: Integrated Cadastral Information Society (ICIS) 03-26-2014; British Columbia Geographic System (BCGS) Grid: BC MFLNRO 2003; Railways, Base Mapping: Government of British Columbia TRIM 2005-2007.

Although there is no reason to believe that there are any errors associated with the data used to generate this product or in the product itself, users of these data are advised that errors in the data may be present.

Produced By: Jacobs



July 2021

MAPSHEET 5 OF 10

**CERTIFIED
PIPELINE CORRIDOR**

**EAGLE MOUNTAIN-WOODFIBRE
GAS PIPELINE PROJECT**

- Kilometre Post
- Certified Pipeline Corridor
- Certified Compressor Station Area
- Certified Electrical Transmission Line Corridor
- Existing NPS10 to be Abandoned or Decommissioned
- Highway
- Road
- Resource Road
- Railway
- Elevation Contour (100 m)
- Watercourse
- Waterbody
- Wetland
- Transmission Tower
- Transmission Line
- Building
- Builtup Area
- Private Parcel
- Agricultural Land Reserve
- Wildlife Habitat Area
- Old Growth Management Area (Legal)
- Ungulate Winter Range
- Municipality
- Regional District
- Wildlife Management Area (WMA)
- Park/Protected Area
- First Nations Reserve

SCALE: 1:20,000

0 200 400 600 800 metres

(All Locations Approximate)

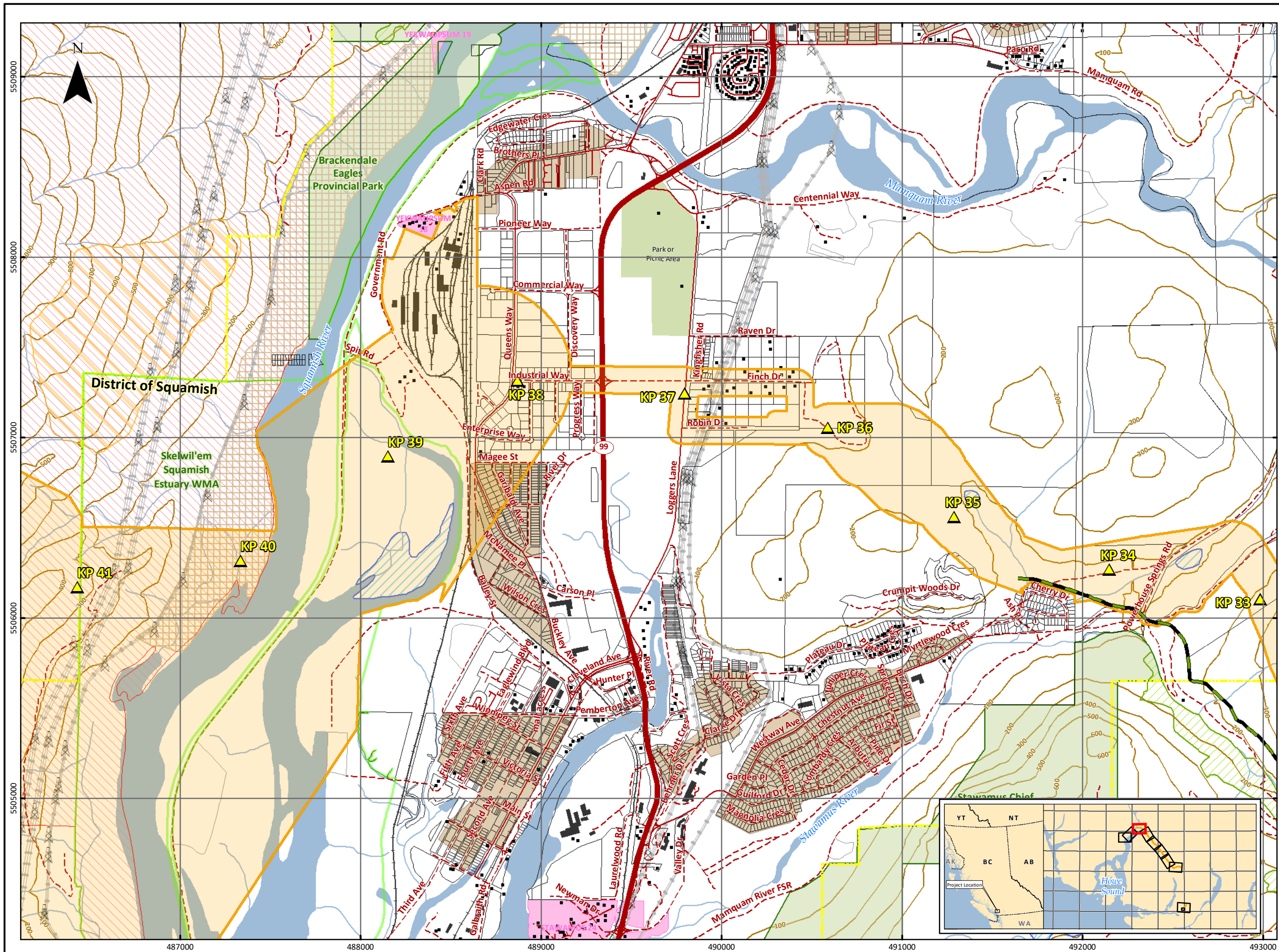
BCGS Mapsheet: 92G.065 / 92G.075

UTM Zone 10 North, NAD 1983.

KPs: Universal Pegasus International (UPI) 08-21-2014 (1017) and UPI 5-21-2021 (4002); Certified Corridor for EGP Pipeline: Jacobs 8-30-2019 (Revision 15); Squamish Compressor Station Siting Area: Jacobs 5-28-2020; Mt Mulligan Compressor Station Siting Area: Jacobs 8-04-2015; Eagle Mountain Compressor Station Area: McElhenny Associates Land Surveying Ltd 10-16-2014; Certified Electrical Transmission Corridor: CH2M 7-30-2014; V1 Transmission: DBS Energy Inc 06-04-2014; Existing Transmission Lines: BC Hydro 03-24-2014; Roads: BC MFLNRO 2012; Hydrography: BC MFLNRO 2008; Municipalities: BC MFLNRO 2007; Parks, Wildlife Management Areas: BC MFLNRO 2008; Wildlife Habitat Areas, Ungulate Winter Range: BC MOE 2005; Old Growth Management Areas: BC FLNRO 2009; First Nations Reserves: Government of Canada 2016; Agricultural Land Reserves: Agricultural Land Commission 2015; Private Parcels: Integrated Cadastral Information Society (ICIS) 03-26-2014; British Columbia Geographic System (BCGS) Grid: BC MFLNRO 2003; Railways, Base Mapping: Government of British Columbia TRIM 2005-2007.

Although there is no reason to believe that there are any errors associated with the data used to generate this product or in the product itself, users of these data are advised that errors in the data may be present.

Produced By: Jacobs



July 2021

MAPSHEET 6 OF 10

**CERTIFIED
PIPELINE CORRIDOR**

**EAGLE MOUNTAIN-WOODFIBRE
GAS PIPELINE PROJECT**

- Kilometre Post
- Certified Pipeline Corridor
- Certified Compressor Station Area
- Certified Electrical Transmission Line Corridor
- Existing NPS10 to be Abandoned or Decommissioned
- Highway
- Road
- Resource Road
- Railway
- Elevation Contour (100 m)
- Watercourse
- Waterbody
- Wetland
- Transmission Tower
- Transmission Line
- Building
- Builtup Area
- Private Parcel
- Agricultural Land Reserve
- Wildlife Habitat Area
- Old Growth Management Area (Legal)
- Ungulate Winter Range
- Municipality
- Regional District
- Wildlife Management Area (WMA)
- Park/Protected Area
- First Nations Reserve

SCALE: 1:20,000

0 200 400 600 800 metres

(All Locations Approximate)

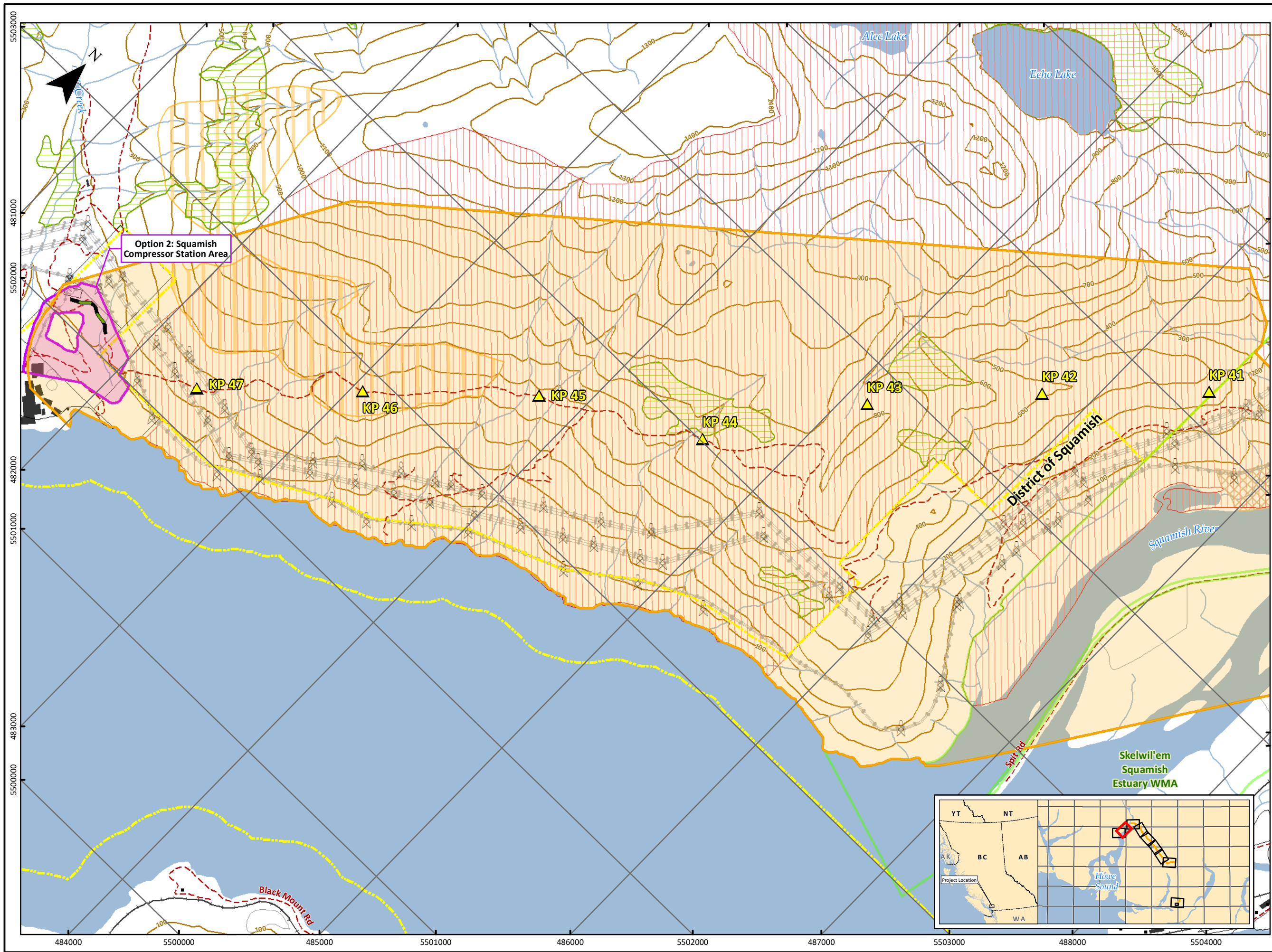
BCGS Mapsheet: 92G.065 / 92G.075

UTM Zone 10 North, NAD 1983.

KPs: Universal Pegasus International (UPI) 08-21-2014 (1017) and UPI 5-21-2021 (4002); Certified Corridor for EGP Pipeline: Jacobs 8-30-2019 (Revision 15); Squamish Compressor Station Siting Area: Jacobs 5-28-2020; Mt. Mulligan Compressor Station Siting Area: Jacobs 8-04-2015; Eagle Mountain Compressor Station Area: McElhenny Associates Land Surveying Ltd 10-16-2014; Certified Electrical Transmission Corridor: CH2M 7-30-2014; V1 Transmission: DBS Energy Inc 06-04-2014; Existing Transmission Lines: BC Hydro 03-24-2014; Roads: BC MFLNRO 2012; Hydrography: BC MFLNRO 2008; Municipalities: BC MFLNRO 2007; Parks, Wildlife Management Areas: BC MFLNRO 2008; Wildlife Habitat Areas, Ungulate Winter Range: BC MOE 2005; Old Growth Management Areas: BC FLNRO 2009; First Nations Reserves: Government of Canada 2016; Agricultural Land Reserves: Agricultural Land Commission 2015; Private Parcels: Integrated Cadastral Information Society (ICIS) 03-26-2014; British Columbia Geographic System (BCGS) Grid: BC MFLNRO 2003; Railways, Base Mapping: Government of British Columbia TRIM 2005-2007.

Although there is no reason to believe that there are any errors associated with the data used to generate this product or in the product itself, users of these data are advised that errors in the data may be present.

Produced By: Jacobs



July 2021

MAPSHEET 7 OF 10

CERTIFIED
PIPELINE CORRIDOR

EAGLE MOUNTAIN-WOODFIBRE
GAS PIPELINE PROJECT

Kilometre Post

Certified Pipeline Corridor

Certified Compressor Station Area

Certified Electrical Transmission Line Corridor

Existing NPS10 to be Abandoned or Decommissioned

Highway

Road

Resource Road

Railway

Elevation Contour (100 m)

Watercourse

Waterbody

Wetland

Transmission Tower

Transmission Line

Building

Builtup Area

Private Parcel

Agricultural Land Reserve

Wildlife Habitat Area

Old Growth Management Area (Legal)

Ungulate Winter Range

Municipality

Regional District

Wildlife Management Area (WMA)

Park/Protected Area

First Nations Reserve

SCALE: 1:20,000

0200400600800

metres

(All Locations Approximate)

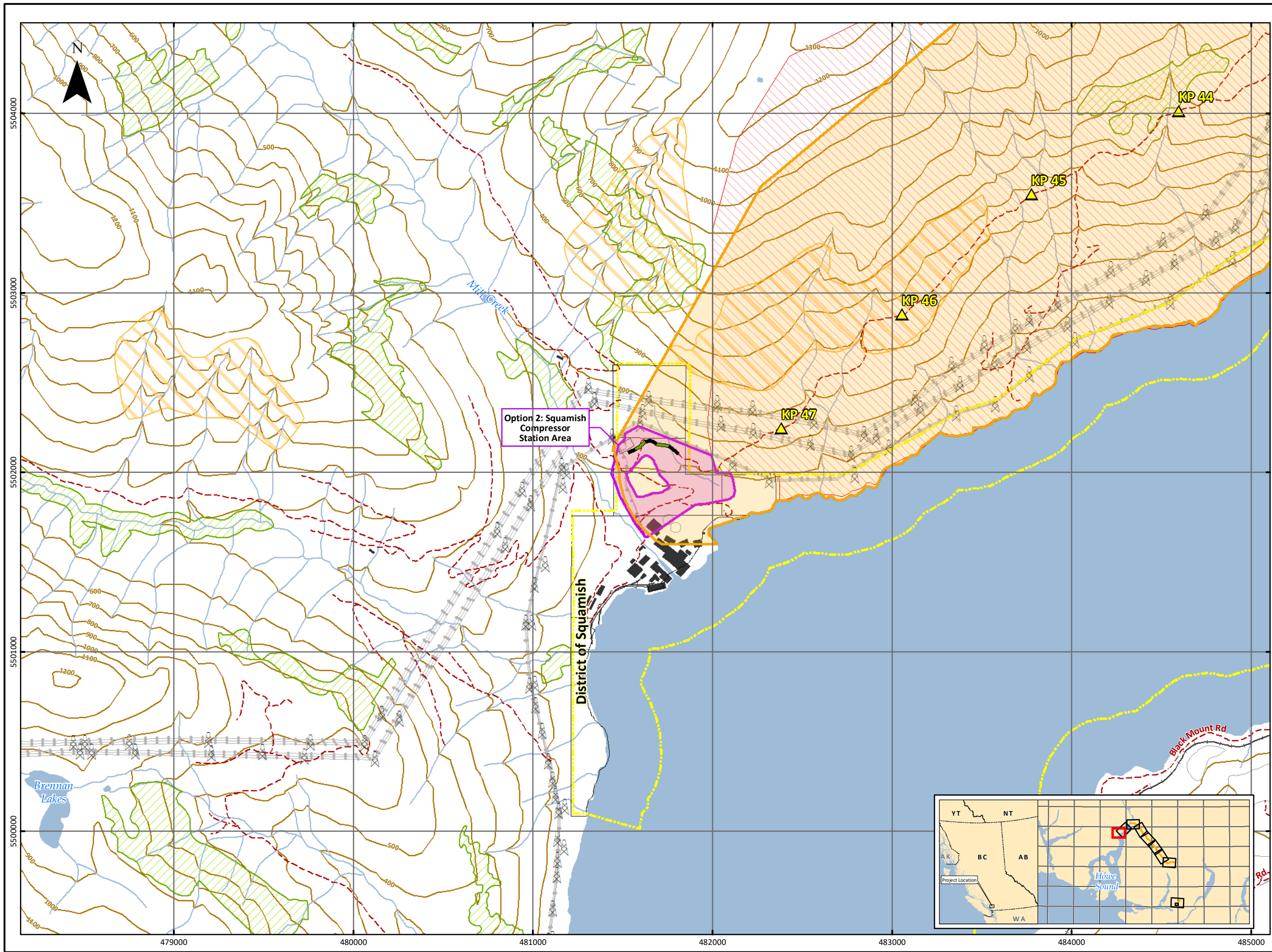
BCGS Mapsheet: 92G.064 / 92G.065 / 92G.074 / 92G.075

UTM Zone 10 North, NAD 1983.

KPs: Universal Pegasus International (UPI) 08-21-2014 (1017) and UPI 5-21-2021 (4002); Certified Corridor for EGP Pipeline: Jacobs 8-30-2019 (Revision 15); Squamish Compressor Station Siting Area: Jacobs 5-28-2020; Mt Mulligan Compressor Station Siting Area: Jacobs 8-04-2015; Eagle Mountain Compressor Station Area: McElhannay Associates Land Surveying Ltd 10-16-2014; Certified Electrical Transmission Corridor: CH2M 7-30-2014; V1 Transmission: DBS Energy Inc 06-04-2014; Existing Transmission Lines: BC Hydro 03-24-2014; Roads: BC MFLNRO 2012; Hydrography: BC MFLNRO 2008; Municipalities: BC MFLNRO 2007; Parks, Wildlife Management Areas: BC MFLNRO 2008; Wildlife Habitat Areas, Ungulate Winter Range: BC MDE 2005; Old Growth Management Areas: BC FLNRO 2009; First Nations Reserves: Government of Canada 2016; Agricultural Land Reserves: Agricultural Land Commission 2015; Private Parcels: Integrated Cadastral Information Society (ICIS) 03-26-2014; British Columbia Geographic System (BCGS) Grid: BC MFLNRO 2003; Railways, Base Mapping: Government of British Columbia TRIM 2005-2007.

Although there is no reason to believe that there are any errors associated with the data used to generate this product or in the product itself, users of these data are advised that errors in the data may be present.

Produced By: Jacobs



July 2021

MAPSHEET 8 OF 10

**CERTIFIED
PIPELINE CORRIDOR**

**EAGLE MOUNTAIN-WOODFIBRE
GAS PIPELINE PROJECT**

- Kilometre Post
- Certified Pipeline Corridor
- Certified Compressor Station Area
- Certified Electrical Transmission Line Corridor
- Existing NPS10 to be Abandoned or Decommissioned
- Highway
- Road
- Resource Road
- Railway
- Elevation Contour (100 m)
- Watercourse
- Waterbody
- Wetland
- Transmission Tower
- Transmission Line
- Building
- Builtup Area
- Private Parcel
- Agricultural Land Reserve
- Wildlife Habitat Area
- Old Growth Management Area (Legal)
- Ungulate Winter Range
- Municipality
- Regional District
- Wildlife Management Area (WMA)
- Park/Protected Area
- First Nations Reserve

SCALE: 1:20,000

0 200 400 600 800 metres

(All Locations Approximate)

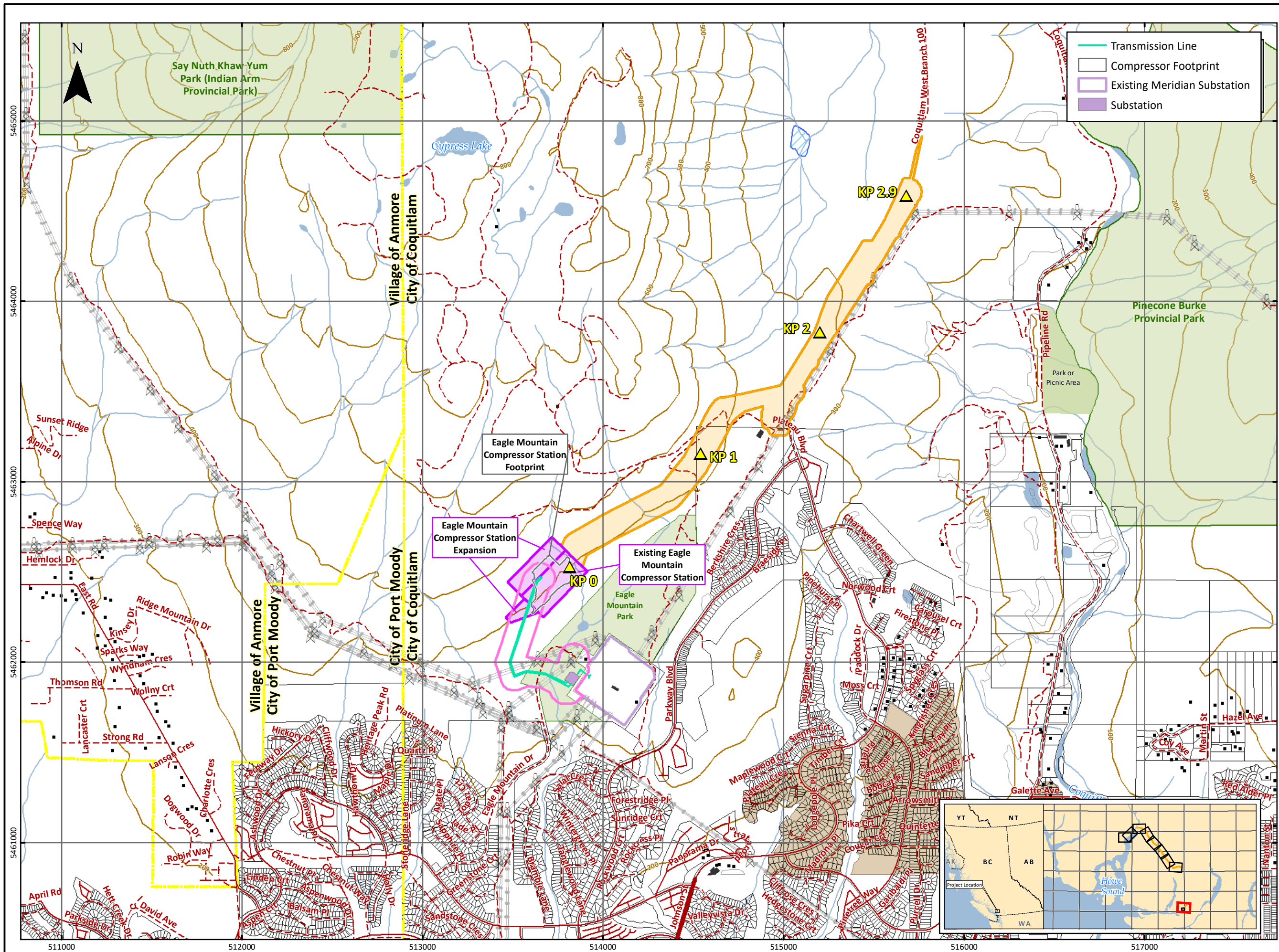
BCGS Mapsheet: 92G.064

UTM Zone 10 North, NAD 1983.

KPs: Universal Pegasus International (UPI) 08-21-2014 (1017) and UPI 5-21-2021 (4002); Certified Corridor for EGP Pipeline: Jacobs 8-30-2019 (Revision 15); Squamish Compressor Station Siting Area: Jacobs 5-28-2020; Mt. Mulligan Compressor Station Siting Area: Jacobs 8-04-2015; Eagle Mountain Compressor Station Area: McElhannay Associates Land Surveying Ltd 10-16-2014; Certified Electrical Transmission Corridor: CH2M 7-30-2014; V1 Transmission: DBS Energy Inc 06-04-2014; Existing Transmission Lines: BC Hydro 03-24-2014; Roads: BC MFLNRO 2012; Hydrography: BC MFLNRO 2008; Municipalities: BC MFLNRO 2007; Parks, Wildlife Management Areas: BC MFLNRO 2008; Wildlife Habitat Areas, Ungulate Winter Range: BC MFLNRO 2005; Old Growth Management Areas: BC FLNRO 2009; First Nations Reserves: Government of Canada 2016; Agricultural Land Reserves: Agricultural Land Commission 2015; Private Parcels: Integrated Cadastral Information Society (ICIS) 03-26-2014; British Columbia Geographic System (BCGS) Grid: BC MFLNRO 2003; Railways, Base Mapping: Government of British Columbia TRIM 2005-2007.

Although there is no reason to believe that there are any errors associated with the data used to generate this product or in the product itself, users of these data are advised that errors in the data may be present.

Produced By: Jacobs



July 2021

MAPSHEET 9 OF 10

**CERTIFIED
PIPELINE CORRIDOR**

**EAGLE MOUNTAIN-WOODFIBRE
GAS PIPELINE PROJECT**

- Kilometre Post
- Certified Pipeline Corridor
- Certified Compressor Station Area
- Certified Electrical Transmission Line Corridor
- Existing NPS10 to be Abandoned or Decommissioned
- Highway
- Road
- Resource Road
- Railway
- Elevation Contour (100 m)
- Watercourse
- Waterbody
- Wetland
- Transmission Tower
- Transmission Line
- Building
- Builtup Area
- Private Parcel
- Agricultural Land Reserve
- Wildlife Habitat Area
- Old Growth Management Area (Legal)
- Ungulate Winter Range
- Municipality
- Regional District
- Wildlife Management Area (WMA)
- Park/Protected Area
- First Nations Reserve

SCALE: 1:20,000

0 200 400 600 800 metres

(All Locations Approximate)

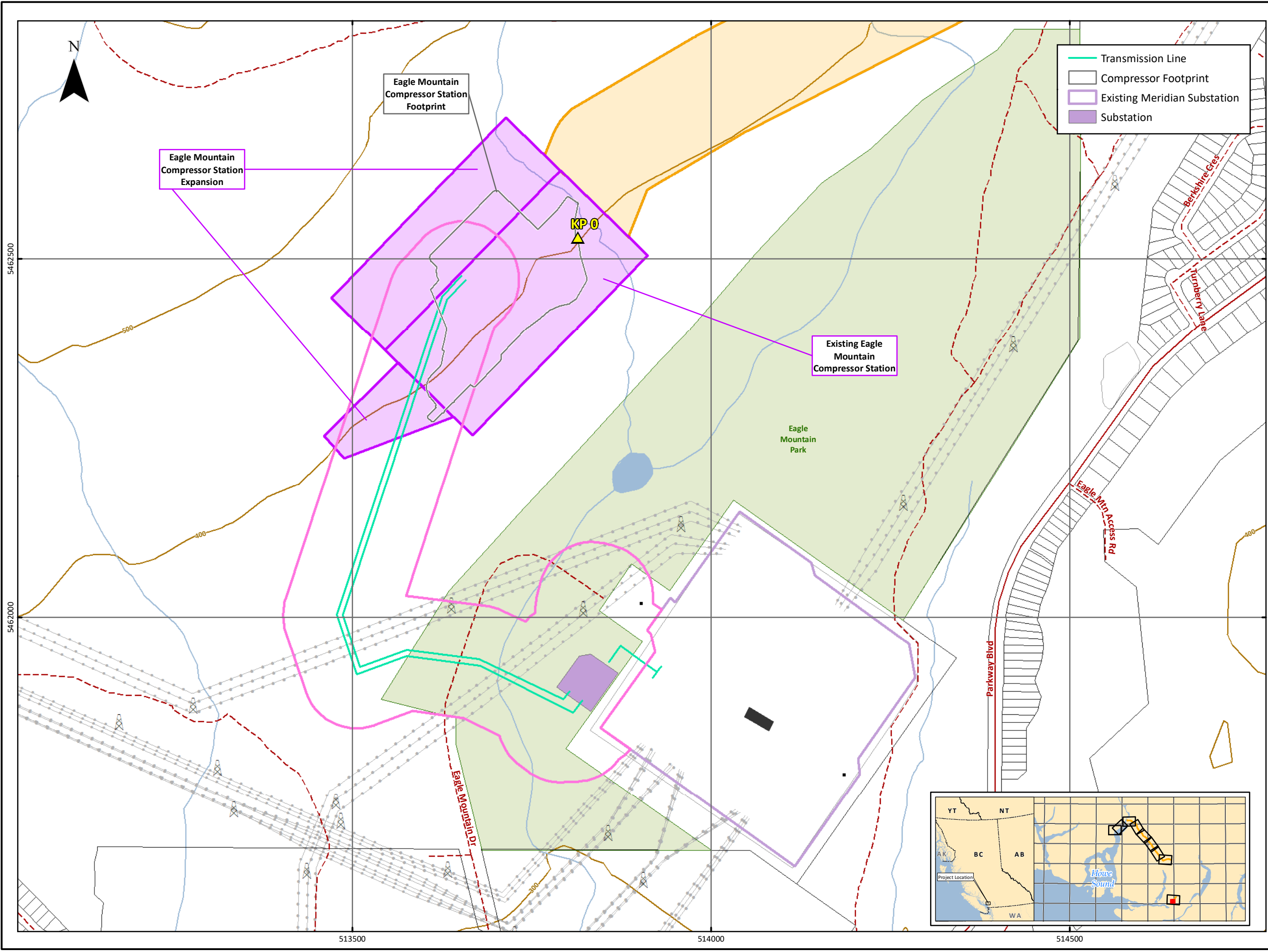
BCGS Mapsheet: 92G.036 / 92G.037

UTM Zone 10 North, NAD 1983.

KPs: Universal Pegasus International (UPI) 08-21-2014 (1017) and UPI 5-21-2021 (4002); Certified Corridor for EGP Pipeline: Jacobs 8-30-2019 (Revision 15); Squamish Compressor Station Siting Area: Jacobs 5-28-2020; Mt Mulligan Compressor Station Siting Area: Jacobs 8-04-2015; Eagle Mountain Compressor Station Area: McElhanney Associates Land Surveying Ltd 10-16-2014; Certified Electrical Transmission Corridor: CH2M 7-30-2014; V1 Transmission: DBS Energy Inc 06-04-2014; Existing Transmission Lines: BC Hydro 03-24-2014; Roads: BC MFLNRO 2012; Hydrography: BC MFLNRO 2008; Municipalities: BC MFLNRO 2007; Parks, Wildlife Management Areas: BC MFLNRO 2008; Wildlife Habitat Areas, Ungulate Winter Range: BC MOE 2005; Old Growth Management Areas: BC FLNRO 2009; First Nations Reserves: Government of Canada 2016; Agricultural Land Reserves: Agricultural Land Commission 2015; Private Parcels: Integrated Cadastral Information Society (ICIS) 03-26-2014; British Columbia Geographic System (BCGS) Grid: BC MFLNRO 2003; Railways, Base Mapping: Government of British Columbia TRIM 2005-2007.

Although there is no reason to believe that there are any errors associated with the data used to generate this product or in the product itself, users of these data are advised that errors in the data may be present.

Produced By: Jacobs



Transmission Line

Compressor Footprint

Existing Meridian Substation

Substation

July 2021

MAPSHEET 10 OF 10

CERTIFIED
PIPELINE CORRIDOR

EAGLE MOUNTAIN-WOODFIBRE
GAS PIPELINE PROJECT

Kilometre Post

Certified Pipeline Corridor

Certified Compressor Station Area

Certified Electrical Transmission Line Corridor

Existing NPS10 to be Abandoned or Decommissioned

Highway

Road

Resource Road

Railway

Elevation Contour (100 m)

Watercourse

Waterbody

Wetland

Transmission Tower

Transmission Line

Building

Builtup Area

Private Parcel

Agricultural Land Reserve

Wildlife Habitat Area

Old Growth Management Area (Legal)

Ungulate Winter Range

Municipality

Regional District

Wildlife Management Area (WMA)

Park/Protected Area

First Nations Reserve

SCALE: 1:5,000

050100150200

metres

(All Locations Approximate)

BCGS Mapsheet: 92G.036

UTM Zone 10 North, NAD 1983.

KPs: Universal Pegasus International (UPI) 08-21-2014 (1017) and UPI 5-21-2021 (4002); Certified Corridor for EGP Pipeline: Jacobs 8-30-2019 (Revision 15); Squamish Compressor Station Siting Area: Jacobs 5-28-2020; Mt Mulligan Compressor Station Siting Area: Jacobs 8-04-2015; Eagle Mountain Compressor Station Area: McElhannay Associates Land Surveying Ltd 10-16-2014; Certified Electrical Transmission Corridor: CH2M 7-30-2014; V1 Transmission: DBS Energy Inc 06-04-2014; Existing Transmission Lines: BC Hydro 03-24-2014; Roads: BC MFLNRO 2012; Hydrography: BC MFLNRO 2008; Municipalities: BC MFLNRO 2007; Parks, Wildlife Management Areas: BC MFLNRO 2008; Wildlife Habitat Areas, Ungulate Winter Range: BC MOE 2005; Old Growth Management Areas: BC FLNRO 2009; First Nations Reserves: Government of Canada 2016; Agricultural Land Reserves: Agricultural Land Commission 2015; Private Parcels: Integrated Cadastral Information Society (ICIS) 03-26-2014; British Columbia Geographic System (BCGS) Grid: BC MFLNRO 2003; Railways, Base Mapping: Government of British Columbia TRIM 2005-2007.

Although there is no reason to believe that there are any errors associated with the data used to generate this product or in the product itself, users of these data are advised that errors in the data may be present.

Produced By: Jacobs