

**APPENDIX 3-A  
GALORE CREEK GOLD-SILVER-COPPER PROJECT  
OVERVIEW #1**

---





# SpectrumGold Inc.

A NovaGold Subsidiary

## Galore Creek Gold-Silver-Copper Project Overview



View Looking East down Copper Canyon

### Location:

75 km northwest of Eskay Creek

### Inferred Resource:

- 5.2 million ounces gold
- 69.4 million ounces silver
- 5.9 billion pounds copper

### Mining/Milling Method:

Open Pit/Conventional Copper Mill Producing Concentrate

### Cost to Build:

\$450-600 million



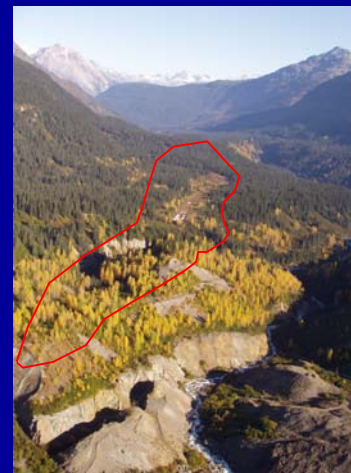
View of 2003 Drilling in Southwest Deposit  
Outline of Deposit Shown in Red

### Employment:

(Direct + Indirect)  
Construction 700-1200  
Operations: 500-800

### Timeline:

2004-2007:  
Exploration, Engineering,  
Environmental Studies  
2007-2009:  
Construction  
2009-2034  
Operation (25 year life)

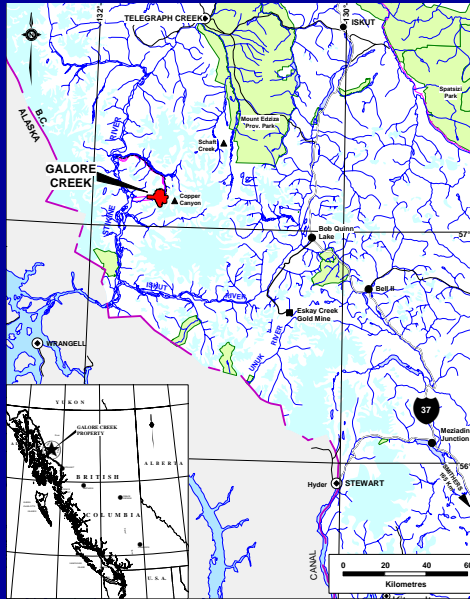


View Looking North with  
Outline of Main Deposit Shown in Red



**SpectrumGold Inc.**  
A NovaGold Subsidiary

## Galore Creek Gold-Silver-Copper Project Location



Located in  
Tahltan Traditional Territory

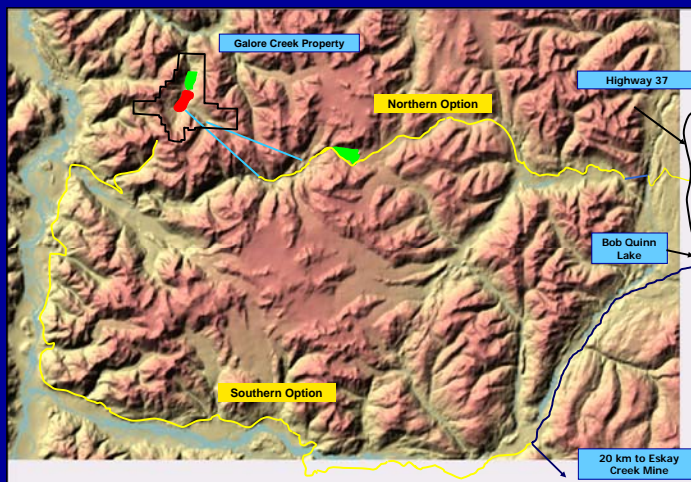
75 km northwest of  
Eskey Creek

85 km southwest of  
Telegraph Creek

167 km northwest  
of Stewart

100 km southwest  
of Iskut

## Access Options Being Examined



- Concentrate/supplies shipped via Stewart
- Two alternative roads to access Highway 37 are being examined in 2004



**SpectrumGold Inc.**  
A NovaGold Subsidiary

## **Galore Creek Gold-Silver-Copper Project Training/Employment Opportunities**

### 2004/05 Opportunities and Training:

- Drill helpers
  - 7 – 10 for summer season
- Rescan Tahltan Environmental Company (RTEC)
  - 9 - 12 field assistants
  - Winter technical training planned
- Contractors/Labour
  - Numerous opportunities for short term employment

Interested?

Contact: Ann Fraser in Dease Lake  
[ann.fraser@novagold.net](mailto:ann.fraser@novagold.net)



### Construction Period: 2007-2009

- 700-1200 jobs created

### Operation Period: 2009-2030+

- Site employees 250-400
- Direct contractors 250-400
- Total 500-800 full time jobs

**SpectrumGold is working  
to put your local community to work!**



# SpectrumGold Inc.

A NovaGold Subsidiary

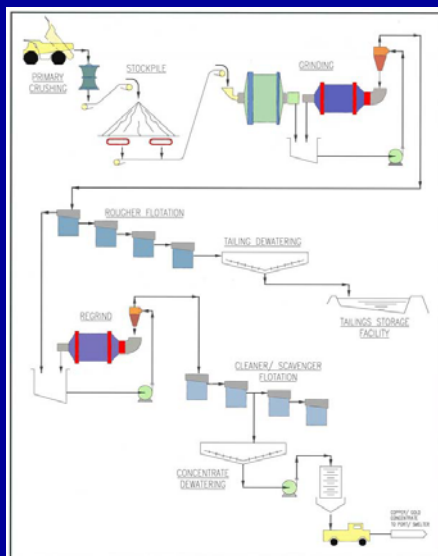
## Galore Creek Gold-Silver-Copper Project Mine Method/Process

Open Pit Mining:  
Using Truck and Shovel

Mining Rate:  
30,000 to 60,000 tonnes per day of ore  
60,000 to 120,000 tonnes per day of waste



Milling:  
Conventional Copper Mill  
Producing Concentrate  
3 stages: crushing, grinding, flotation



Annual Production:

300,000 to 600,000 tonnes  
of copper concentrate

Trucked to Stewart for shipping from port





# SpectrumGold Inc.

A NovaGold Subsidiary

## Galore Creek Gold-Silver-Copper Project 2004 Work Program



### Exploration:

- Re-establish 1960's camp
- +20,000 m of diamond drilling to define deposit and test exploration targets
- Airborne and ground geophysics



### Engineering:

- Road design and cost estimates
- Review of plant and tailings site options
- Testwork on properties of ore and waste



### Environmental Studies

- Galore Creek Valley Area
- Proposed Access Corridors
- Fish and Wildlife Habitat



### Studies include:

- Atmosphere/Climate
- Water and Sediment Quality
- Fish and Wildlife Habitat
- Cultural and Heritage
- Archaeology
- Habitat & Vegetation
- Rock Geochemistry



**Total Budget: >\$8 million**



**SpectrumGold Inc.**

A NovaGold Subsidiary

## **Galore Creek Gold-Silver-Copper Project Environment**

British Columbia Environmental Assessment Process

- Galore Creek Project entered the process in February of 2004
- An Environmental Assessment Document will be submitted at the end of 2005
- Rescan-Tahltan Environmental Consultants (RTEC) are conducting the baseline studies in 2004/05



Items that will be focused on during environmental assessment process and as the company moves forward with mine planning and design:

- Understanding and protection of the Stikine/Iskut Rivers and their diverse ecosystems
- Importance of the region for habitat for salmon, grizzly bear, mountain goat and moose
- Recognition that the property is within Tahltan Traditional Territory and the impact of the project on the Tahltan and local communities

**Spectrum would like your input!  
Please let us know your comments or concerns!**

**SpectrumGold recognizes and respects the environmental  
and cultural significance of the land, air and water  
surrounding the Galore Creek Project**



**SpectrumGold Inc.**  
A NovaGold Subsidiary

---

## **GALORE CREEK GOLD-SILVER-COPPER PROJECT**

### **COMMENT SHEET**

---

Did you find the open house informative?

Yes                  No

Did you receive enough information?

Yes                  No

Would you come to another open house on the project at a later date?

Yes                  No

What other topics would you like to hear or learn more about?

---

---

Please provide any comments, questions or suggestions below:

---

---

---

---

---

Please provide: (optional)

Name: \_\_\_\_\_

Address: \_\_\_\_\_

Contact: (phone/e-mail)\_\_\_\_\_



## Training/Employment Opportunities

### 2004/2005 Opportunities and Training:

- Drill helpers
  - 7-10 for summer season
- Rescan Tahltan Environmental Company (RTEC)
  - 9-12 field assistants
  - Winter technical training planned
- Contractors/Labour
  - Numerous opportunities for short term employment

Contact: Ann Fraser in Dease Lake



Construction Period: 2007-2009: 700-1200 jobs created

Operation Period: 2009-2030+: Site employees 250-400; direct contractors 250-400

Total Full Time Jobs: 500-800 during operations



### For further information, contact

#### Dease Lake

Ann Fraser, Senior Project Coordinator  
P.O. Box 367, Dease Lake, V0C 1L0; [ann.fraser@novagold.net](mailto:ann.fraser@novagold.net)

#### Vancouver

Doug Brown, Vice-President Business Development or Sue Craig, Land & Environmental Manager at  
Suite 3454, 1055 Dunsmuir Street, P.O. Box 49215, Vancouver BC V7X 1K8  
Toll Free: 1-866-669-6227; Facsimile: 604-669-6272;  
e-mail: [doug.brown@novagold.net](mailto:doug.brown@novagold.net) or [sue.craig@novagold.net](mailto:sue.craig@novagold.net)

Or check out our website: [www.spectrumgold.net](http://www.spectrumgold.net)



SpectrumGold Inc.

# SpectrumGold Inc.

A NovaGold Subsidiary

# Galore Creek Project

## Turning Experience and Opportunity into Gold

SpectrumGold Inc., a subsidiary of NovaGold Resources Inc. is focused on exploration and development of quality precious metal properties in Western Canada. SpectrumGold management has extensive experience in mine exploration and development and in working closely with local communities and First Nations in remote areas. Since 1998, NovaGold has entered into agreements with four First Nations communities in Alaska and maintains a corporate philosophy of fairness, creating opportunities for training and development, and open communication.

SpectrumGold is debt-free and well financed with \$16.4 million in cash. The current share capitalization for the company is 25.7 million shares. NovaGold, Spectrum's parent company is also debt-free and has \$60 million in cash.

SpectrumGold is aggressively exploring, permitting and plans to develop one of the largest undeveloped deposits in North America at the **Galore Creek gold-silver-copper project**.

## Galore Creek Gold-Silver-Copper Project

### Overview

**Underdeveloped mineral resource**

**First discovered almost 50 years ago**

**Inferred Resource estimates indicate the deposit contains**

- 5.2 million ounces gold
- 69 million ounces of silver
- 5.9 billion pounds of copper

**Mining/Milling Method:**

- Open Pit/Conventional Copper Mill Producing Concentrate

**Cost to Build**

- \$450-600 million

**Employment (Direct & Indirect)**

- Construction—700-1200
- Operations—500-800

**Timeline:**

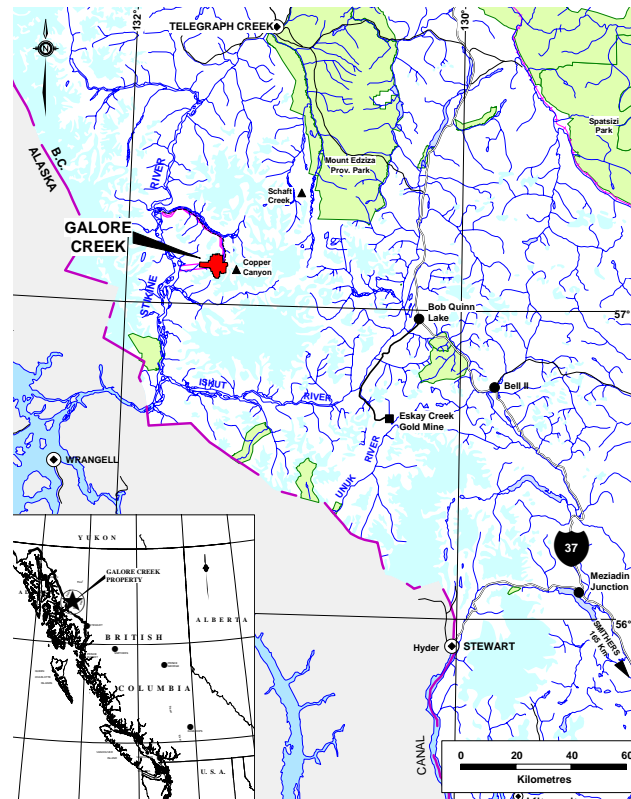
- 2004-2007—Exploration, Engineering, Environmental Studies
- 2007-2009—Construction
- 2009-2034—Operation (25 year life)



Aerial View of Main Deposit at Galore Creek Property



Aerial View of Southwest Deposit at Galore Creek Property

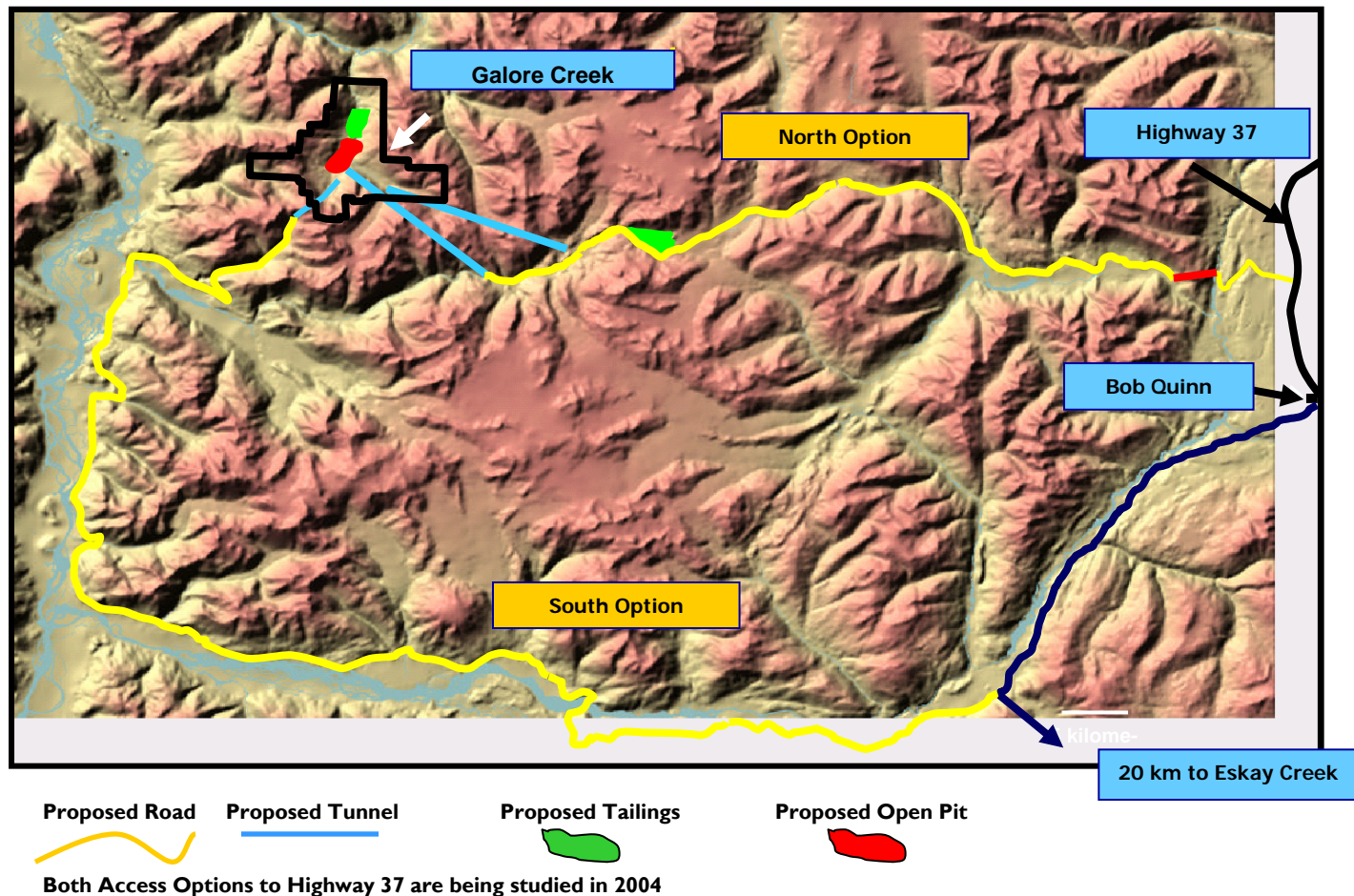


## Ownership and Location

The Galore Creek claim group is located approximately 167 kilometres northwest of the town of Stewart, British Columbia and 75 km northwest of the Eskey Creek mine. Access to the property is presently by helicopter, a distance of 75 kilometres from the Bob Quinn airstrip on the Stewart-Cassiar Highway, to the east. The property is located within the Tahltan Traditional Territory.

In August 2003, SpectrumGold Inc. entered into an option agreement to acquire a 100% interest in the Galore Creek property from Stikine Copper Limited, a company owned by QIT-FER et Titane Inc. and Hudson Bay Mining and Smelting Co. Limited. SpectrumGold has also entered into an option agreement to acquire up to 80% of the adjacent Copper Canyon exploration project from Eagle Plains, and 60% of the adjacent Grace property from Pioneer Metals. SpectrumGold has also acquired additional ground through staking.

## Access Options Being Examined



## Mine Method/Process

**Open Pit Mining Using Truck and Shovel**

**Mining Rate of 30,000 to 60,000 tonnes per day of ore  
60,000 to 120,000 tonnes per day of waste**

**Milling: Conventional Copper Mill Producing Concentrate  
3 stages: crushing, grinding and flotation**

**Annual Production: 300,000 to 600,000 tonnes of Copper Concentrate**

**Trucked to Stewart for shipping from Port**



## 2004 Work Program

### Exploration:

- Re-establish 1960's camp
- +20,000 m of diamond drilling
- Airborne and ground geophysics

### Engineering:

- Road design and cost estimates
- Review of plant and tailing site options
- Testwork on properties of ore and waste

### Environmental:

**Project has officially entered the BC Environmental Assessment Process**

### Studies will include:

- Atmosphere/Climate
- Surface Hydrology
- Aquatic (water & sediment quality, fish habitat & community)
- Soil Survey & Salvage
- Rock Geochemistry
- Habitat & Vegetation
- Terrestrial Wildlife
- Archaeology
- Culture & Heritage

**Total Budget >\$8 million**

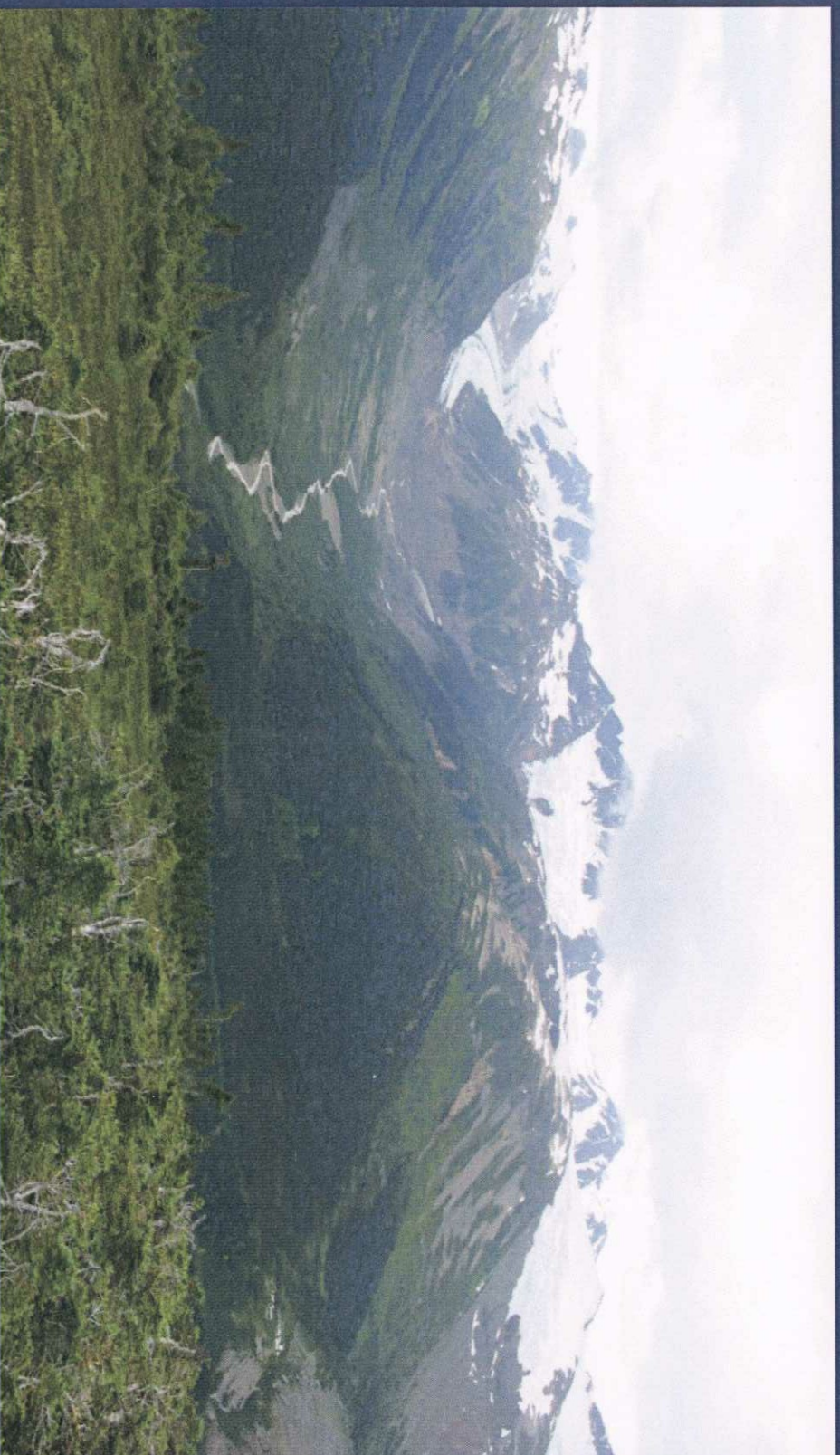




# SpectrumGold Inc.

## Galore Creek

### Gold-Silver-Copper Project



## Open House

SpectrumGold Inc. will be hosting open houses in the communities of Stewart, Dease Lake, Iskut and Telegraph Creek in early June.

Please join us to learn about the Galore Creek Project. Company representatives will be on hand to discuss the plans for the project.

For further information please contact Ann Fraser at [ann.fraser@novagold.net](mailto:ann.fraser@novagold.net)

#### Locations and Times

Stewart	King Edward Hall	Monday, June 7	3-7 p.m.
Dease Lake	Community Hall	Tuesday, June 8	5-9 p.m.
Iskut	Community Hall	Wednesday, June 9	3-7 p.m.
Telegraph Creek	Community Hall	Thursday, June 10	3-7 p.m.