

**APPENDIX 3-C
GALORE CREEK GOLD-SILVER-COPPER PROJECT
OVERVIEW #3**





Building Relationships with Local Communities

2004:

- Supported formation of RTEC
- Opened Dease Lake Office
- Engaged Tahltan Companies
- Open Houses in communities in June and Oct.

2005:

- Participated in January Special Assembly
- Training courses for environmental monitoring, drill helpers, first aid
- Initiate Traditional Knowledge Study and Socio-Economic Studies
- Additional Open Houses



Dease Lake Office :

For Further Information:

Contact Ann Fraser

Phone: 250-771-5227

E-mail: ann.fraser@novagold.net



2005 Program:

- 175 person camp
- At least 50,000 m drilled by 7 rigs
- Focus on one access route and Galore Valley
- Intense environmental studies & preparation of environmental assessment document
- Engineering field studies for feasibility study
- Budget of at least \$25 million

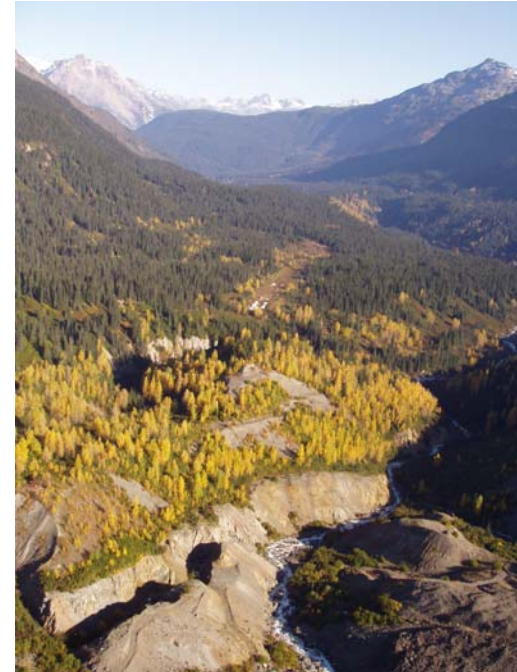


Turning Experience and Opportunity into Gold

NovaGold Canada Inc. is focused on exploration and development of quality precious metal properties in Western Canada. NovaGold Canada Inc. is a wholly owned subsidiary of NovaGold Resources Inc. NovaGold management has extensive experience in mine exploration and development and in working closely with local communities and First Nations in remote areas. Since 1998, NovaGold has entered into agreements with four First Nations communities in Alaska and maintains a corporate philosophy of fairness, creating opportunities for training and development, and open communication.

NovaGold Resources is debt-free and well financed with over \$40 million in cash. The current share capitalization for the company is 62.8 million shares.

NovaGold is aggressively exploring, permitting and plans to develop one of the largest undeveloped deposits in North America at the **Galore Creek gold-silver-copper project**.



Aerial View of Main Deposit at Galore Creek Property

Galore Creek Gold-Silver-Copper Project

Overview

Underdeveloped mineral resource

First discovered almost 50 years ago

Inferred Resource estimates indicate the deposit contains

- 13.7 million ounces gold
- 156 million ounces of silver
- 12.0 billion pounds of copper

Mining/Milling Method:

- Open Pit/Conventional Copper Mill Producing Concentrate

Cost to Build

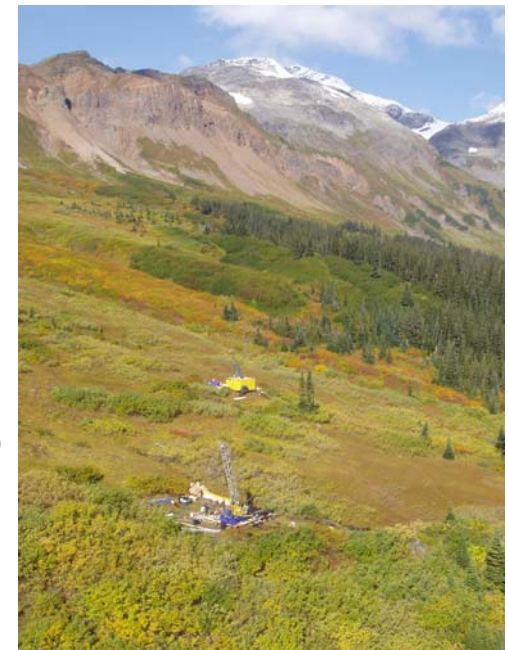
- \$600—\$1,000 million Canadian

Employment (Direct & Indirect)

- Predevelopment (Exploration, Environmental, Engineering) 150-175 (~50 currently employed are Tahltan)
- Construction—700-1200
- Operations—500-800

Timeline:

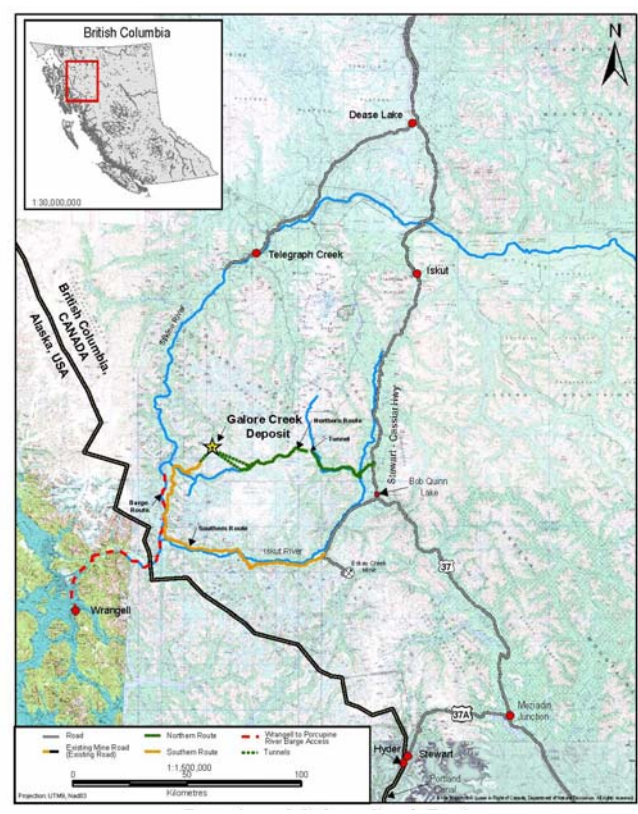
- 2004-2007—Exploration, Engineering, Environmental Studies
- 2007-2009—Construction



Aerial View of Southwest Deposit at Galore Creek Property



Galore Creek Property



Ownership and Location

The Galore Creek claim group is located approximately 167 kilometres northwest of the town of Stewart, British Columbia and 75 km northwest of the Eskay Creek mine. Access to the property is presently by helicopter, a distance of 75 kilometres from the Bob Quinn airstrip on the Stewart-Cassiar Highway, to the east. The property is located within the Tahltan Traditional Territory.

In August 2003, SpectrumGold Inc. (now NovaGold Canada Inc.) entered into an option agreement to acquire a 100% interest in the Galore Creek property from Stikine Copper Limited, a company owned by QIT-FER et Titane Inc. and Hudson Bay Mining and Smelting Co. Limited. SpectrumGold has also entered into an option agreement to acquire up to 80% of the adjacent Copper Canyon exploration project from Eagle Plains, and 60% of the adjacent Grace property from Pioneer Metals. SpectrumGold has also acquired additional ground through staking.

Access Options Being Examined



In 2004 NovaGold studied two alternative routes for road/power access to the project. After many engineering & environmental studies the southern route was chosen as the preferred alternative in early 2005. This decision was based upon ease of construction/operation; cost and financial risks; fish and wildlife studies along proposed routes and safety. **In March 2005 Tahltan leadership and technical advisors requested NovaGold look at a modified Northern Route (Sphaler Creek). NovaGold is reviewing this option at a scoping level.**

Galore Creek Property

Mine Method/Process

Open Pit Mining Using Truck and Shovel

**Mining Rate of 30,000 to 60,000 tonnes per day of ore
60,000 to 120,000 tonnes per day of waste**

**Milling: Conventional Copper Mill Producing Concentrate
3 stages: crushing, grinding and flotation**

Annual Production: 300,000 to 600,000 tonnes of Copper Concentrate

Trucked to Stewart for shipping from Port



2004 Work Program

Exploration:

- **Diamond drilling 25,967 m in 84 holes**
- **Average people in camp per night: 65**
- **60 to 90 people in field (50% First Nation)**
- **4 to 6 helicopters in camp**

Engineering:

- **Scoping study completed in August**
- **Road design and cost estimates**
- **Review of plant and tailing site options**

Environmental:

Baseline studies focused in Galore Creek Valley Area and Proposed Access Corridors

Studies include:

- **Atmosphere/Climate**
- **Surface Hydrology**
- **Aquatic (water & sediment quality, fish habitat & community)**
- **Soil Survey & Salvage**
- **Rock Geochemistry**
- **Habitat & Vegetation**
- **Terrestrial Wildlife**
- **Archaeology**
- **Culture & Heritage**

Total 2004 Exploration, Engineering & Environmental Budget: \$15 million





NovaGold Canada Inc.

Galore Creek

Gold-Silver-Copper Project



Open House and Presentations

NovaGold will be hosting an open house in the community of Iskut on Monday June 20th from 3 to 6 p.m.

Please join us to learn about the Galore Creek Project. Company representatives will be on hand to discuss the 2005 season and plans for the project.

For further information please contact Ann Fraser at 250-771-5227.



Meeting at the School - Food and Refreshments will be served



Building Relationships with Local Communities

2004:

- Supported formation of RTEC
- Opened Dease Lake Office
- Engaged Tahltan Companies
- Open Houses in communities in June and Oct.

2005:

- Participated in January Special Assembly
- Training courses for environmental monitoring, drill helpers, first aid
- Initiate Traditional Knowledge Study and Socio-Economic Studies
- Additional Open Houses



Dease Lake Office :
 For Further Information:
 Contact Ann Fraser
 Phone: 250-771-5227
 E-mail: ann.fraser@novagold.net



2005 Program:

- 175 person camp
- At least 50,000 m drilled by 7 rigs
- Focus on one access route and Galore Valley
- Intense environmental studies & preparation of environmental assessment document
- Engineering field studies for feasibility study
- Budget of at least \$25 million

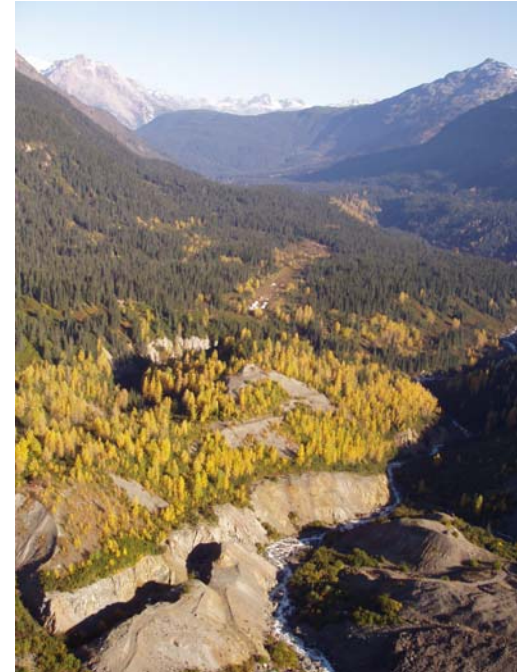


Turning Experience and Opportunity into Gold

NovaGold Canada Inc. is focused on exploration and development of quality precious metal properties in Western Canada. NovaGold Canada Inc. is a wholly owned subsidiary of NovaGold Resources Inc. NovaGold management has extensive experience in mine exploration and development and in working closely with local communities and First Nations in remote areas. Since 1998, NovaGold has entered into agreements with four First Nations communities in Alaska and maintains a corporate philosophy of fairness, creating opportunities for training and development, and open communication.

NovaGold Resources is debt-free and well financed with over \$40 million in cash. The current share capitalization for the company is 66.1 million shares.

NovaGold is aggressively exploring, permitting and plans to develop one of the largest undeveloped deposits in North America at the **Galore Creek gold-silver-copper project**.



Aerial View of Main Deposit at Galore Creek Property

Galore Creek Gold-Silver-Copper Project

Overview

Underdeveloped mineral resource

First discovered almost 50 years ago

Inferred Resource estimates indicate the deposit contains

- 13.7 million ounces gold
- 156 million ounces of silver
- 12.0 billion pounds of copper

Mining/Milling Method:

- Open Pit/Conventional Copper Mill Producing Concentrate

Cost to Build

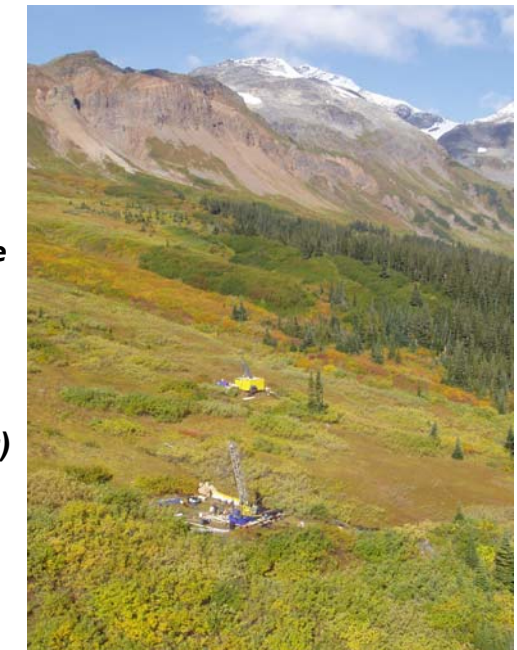
- \$600—\$1,000 million Canadian

Employment (Direct & Indirect)

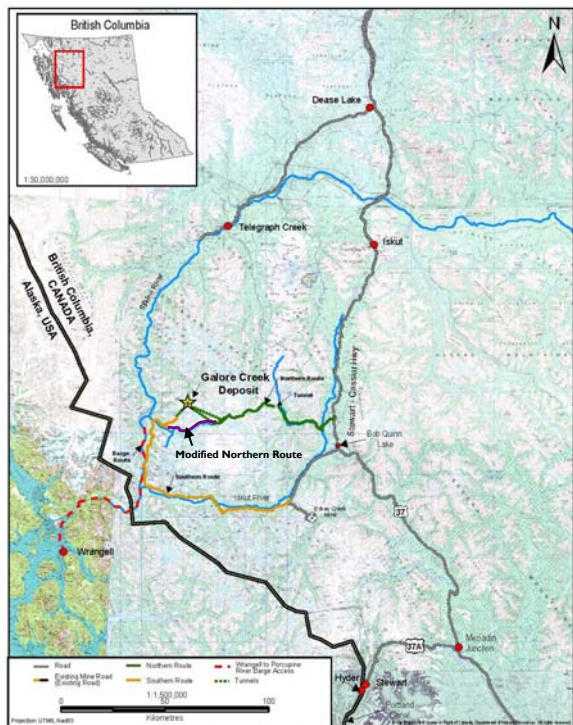
- Predevelopment (Exploration, Environmental, Engineering) 150-175 (~50 currently employed are Tahltan)
- Construction—700-1200
- Operations—500-800

Timeline:

- 2004-2007—Exploration, Engineering, Environmental Studies
- 2007-2009—Construction
- 2010-2035—Operation (25 year mine life)



Aerial View of Southwest Deposit at Galore Creek Property

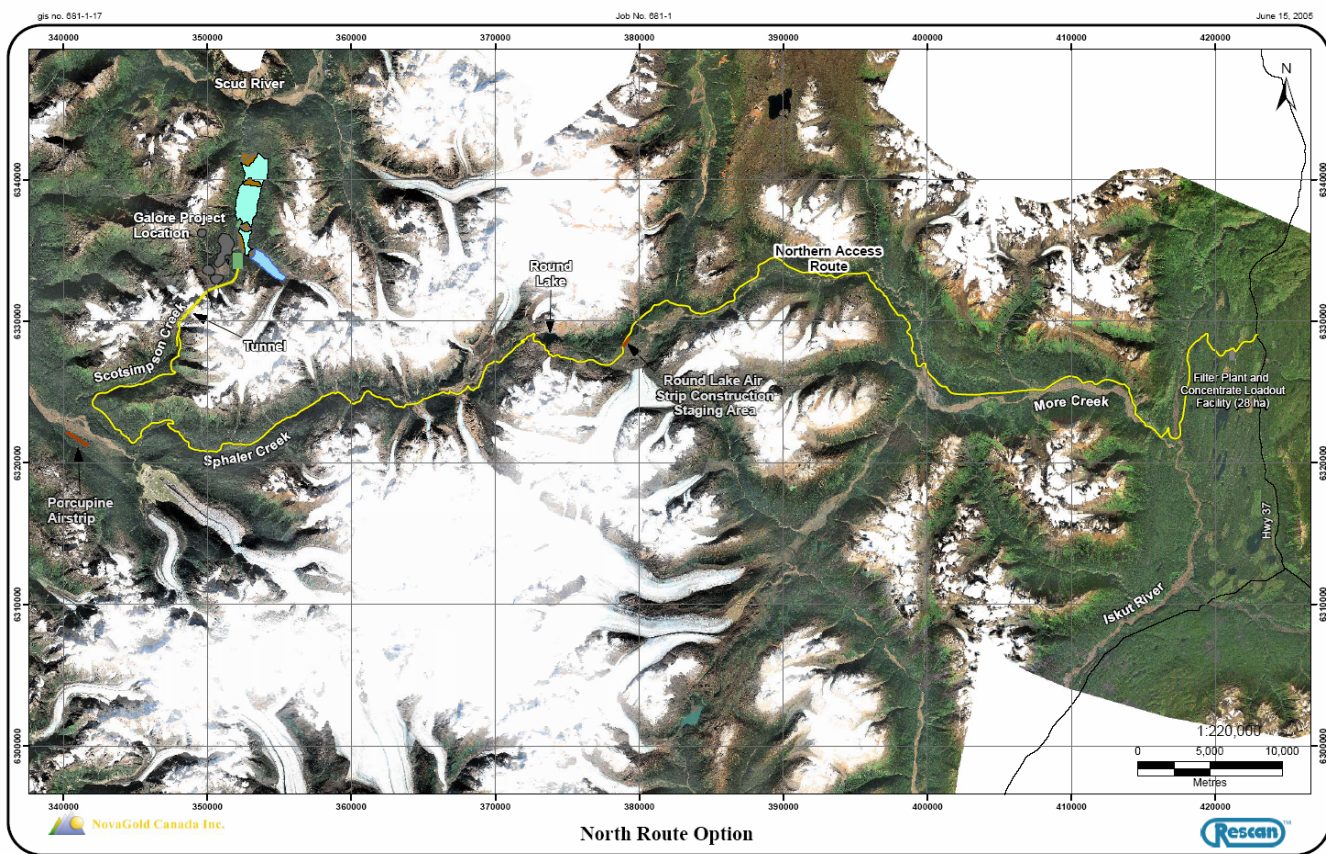


Ownership and Location

The Galore Creek claim group is located approximately 110 kilometres southwest of Iskut, British Columbia and 75 km northwest of the Eskay Creek mine. Access to the property is presently by helicopter, a distance of 75 kilometres from the Bob Quinn airstrip on the Stewart-Cassiar Highway, to the east. The property is located within the Tahltan Traditional Territory.

In August 2003, SpectrumGold Inc. (now NovaGold Canada Inc.) entered into an option agreement to acquire a 100% interest in the Galore Creek property from Stikine Copper Limited, a company owned by QIT-FER et Titane Inc. and Hudson Bay Mining and Smelting Co. Limited. SpectrumGold has also entered into an option agreement to acquire up to 80% of the adjacent Copper Canyon exploration project from Eagle Plains, and 60% of the adjacent Grace property from Pioneer Metals. SpectrumGold has also acquired additional ground through staking.

Access



In 2004 NovaGold studied several routes for road/power to the property, focusing on two alternatives, namely the "northern" and "southern" routes. NovaGold indicated in early 2005 the preferred alternative was the southern route. In response to a request from Tahltan leadership and technical advisors, NovaGold reviewed a modified northern route (shown on figure above). This route had been discounted previously due to the steep grades loaded concentrate trucks would be required to traverse. Shipping the concentrate through a buried pipeline along a single lane road corridor indicates the modified northern corridor is feasible. Engineering and Environmental programs are focusing on this route for 2005.



Mine Method/Process

Open Pit Mining Using Truck and Shovel

**Mining Rate of 30,000 to 60,000 tonnes per day of ore
60,000 to 120,000 tonnes per day of waste**

**Milling: Conventional Copper Mill Producing Concentrate
3 stages: crushing, grinding and flotation**

Annual Production: 300,000 to 600,000 tonnes of Copper Concentrate

**Concentrate shipped via 6" buried pipeline along access route to
Highway 37; concentrate is dewatered and shipped via truck
to port of Stewart**



2004 Work Program

Exploration:

- Diamond drilling 25,967 m in 84 holes
- Average people in camp per night: 65
- 60 to 90 people in field (50% First Nation)
- 4 to 6 helicopters in camp

Engineering:

- Scoping study completed in August
- Road design and cost estimates
- Review of plant and tailing site options

Environmental:

Baseline studies focused in Galore Creek Valley Area and Proposed Access Corridors

Studies include:

- Atmosphere/Climate
- Surface Hydrology
- Aquatic (water & sediment quality, fish habitat & community)
- Soil Survey & Salvage
- Rock Geochemistry
- Habitat & Vegetation
- Terrestrial Wildlife
- Archaeology
- Culture & Heritage

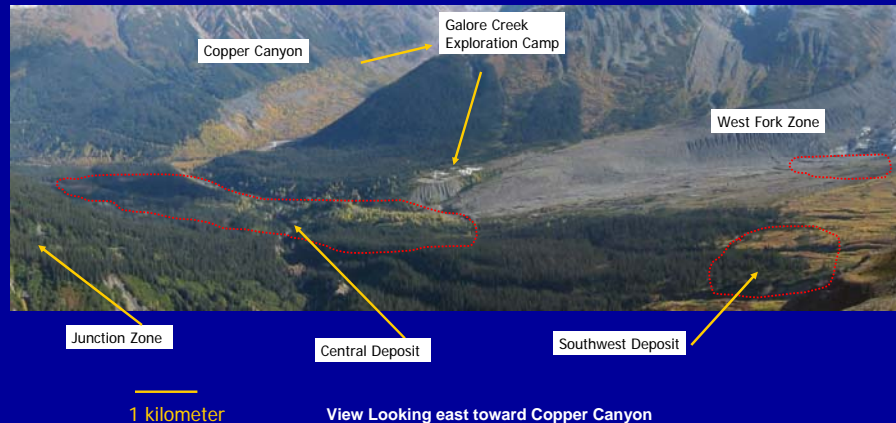
Total 2004 Exploration, Engineering & Environmental





NovaGold Resources Inc.

Galore Creek Gold-Silver-Copper Project Overview



Location:

75 km northwest of Eskay Creek

Inferred Resource:

- 13.7 million ounces gold
- 156 million ounces silver
- 12.0 billion pounds copper

Mining/Milling Method:

Open Pit/Conventional Copper Mill Producing Concentrate

Cost to Build:

\$650-1,000 million Canadian

Employment:

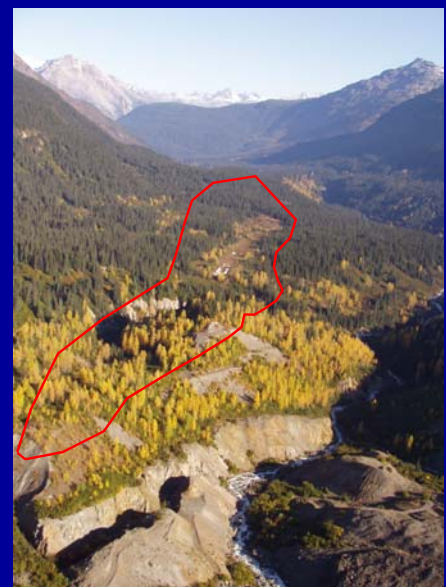
(Direct + Indirect)
Construction 700-1200
Operations: 500-800

Timeline:

2004-2007:
Exploration, Engineering,
Environmental Studies
2007-2009:
Construction
2010-2035
Operation (25 year life)



View of 2003 Drilling in Southwest Deposit
Outline of Deposit Shown in Red



View Looking North with
Outline of Main Deposit Shown in Red



NovaGold Resources Inc.

Galore Creek Gold-Silver-Copper Project 2004 Program

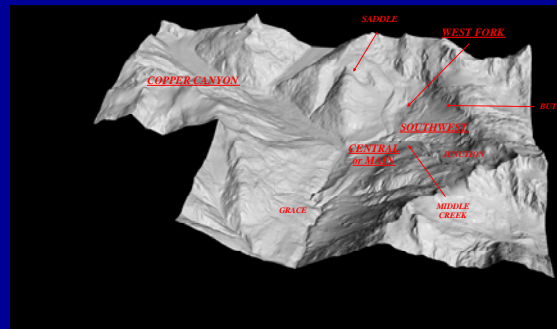
Exploration:

- Diamond drilling 25,967 m in 84 holes
 - Targeted high grade to enhance economics
 - Drilling to define deposit and test exploration targets
- 60 to 90 people employed in the field (50% First Nation)
- Average people in camp per night: 65
- 4 to 6 helicopters in camp



Engineering:

- Scoping study completed in August
- Processing and Tailing Sites
- Metallurgical optimization
- Water Management
- Access Corridor
- Geotechnical



Environmental Studies:

- Conducted by Rescan/Tahltan Environmental Consultants (RTEC)
- Work covered North & South Access and Galore Valley
- Baseline Surveys: Fish & Wildlife populations and seasonal migration
- Water quality and volume in streams and rivers
- Testing of rock for acid generation
- Climate, weather, avalanche and glacial patterns
- Mapping of ecosystems
- Wetland assessments



**Total 2004 Exploration, Engineering & Environmental
Budget: \$15 million**



NovaGold Resources Inc.

Galore Creek Gold-Silver-Copper Project Proposed 2005 Program

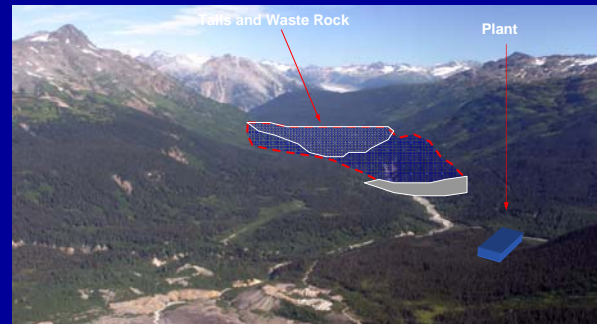
Exploration:

- Diamond drill a minimum of 50,000 m
- 7 diamond drill rigs ; 2 geotechnical rigs
- Expand exploration camp to accommodate 175 people
- Entered into camp on April 16, 2005 to begin snow clearing
- 100 people in camp as of May 25, 2005



Engineering:

- Prefeasibility study completed by July 2005
- Focus on mine design
- Begin feasibility study in 3rd quarter



Environmental Studies:

- Conducted by Rescan/Tahltan Environmental Consultants (RTEC)
- Focus on southern access route and Galore Valley
- Submit environmental assessment documents by end of year
- Apply for permits in 2006



**Total 2005 Exploration, Engineering & Environmental
Budget: at least \$25 million**

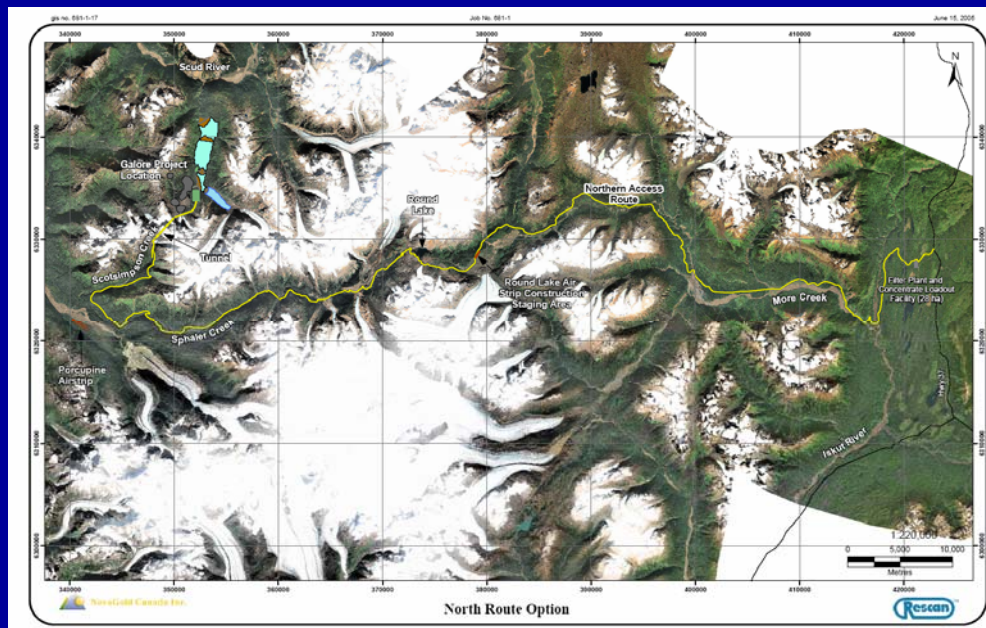


NovaGold Resources Inc.

Galore Creek Gold-Silver-Copper Project Road & Power Access

2004

➤ Studied several alternative routes, focusing on the “northern” and “southern” routes



2005

➤ March - Tahltan leadership and technical advisors requested a modified northern route down Sphaler Creek be reviewed

➤ April-May - Field and engineering work indicated route was feasible if concentrate shipped through a pipeline rather than trucked

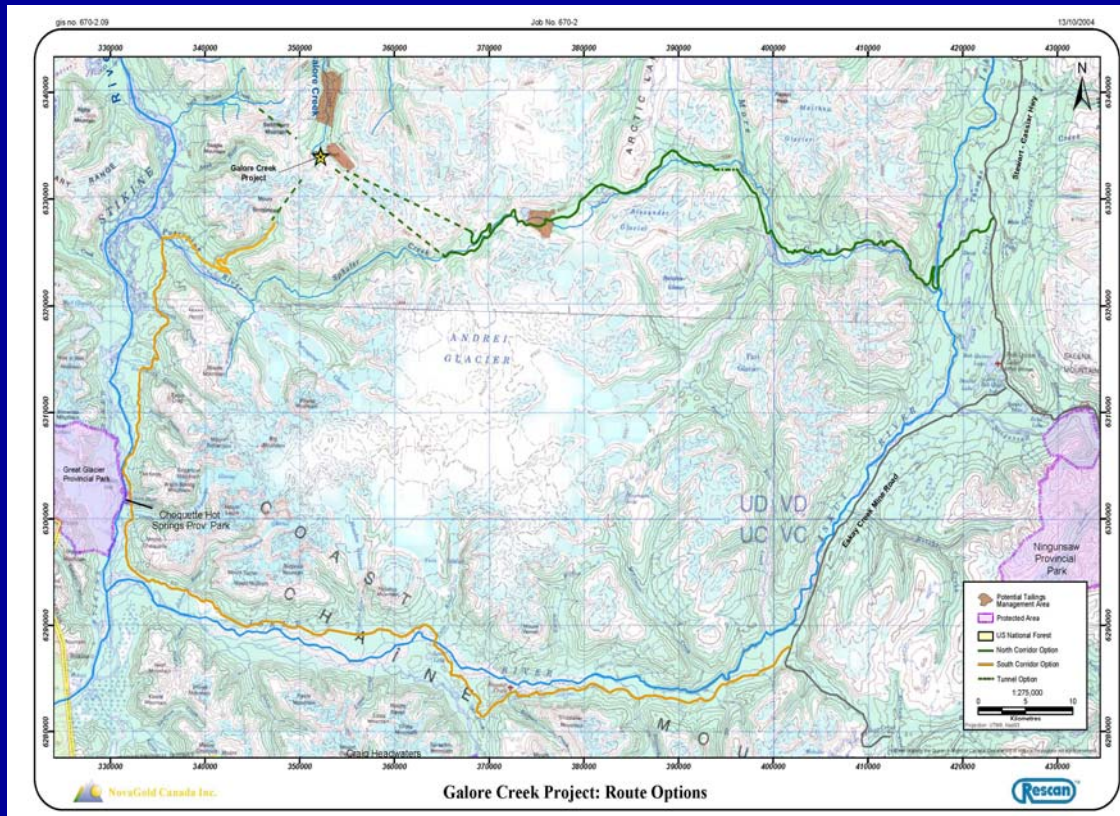
➤ June - Decision made to focus on the modified northern route as shown above - engineering and environmental programs are focusing on this route for 2005 field work



NovaGold Resources Inc.

Galore Creek Gold-Silver-Copper Project

In 2004 NovaGold studied two alternative routes for road & power access to the project.



After many engineering & environmental studies the southern route was chosen as the preferred alternative in early 2005. This decision was based upon:

- Ease of construction/operation
- Cost and financial risks
- Fish and wildlife studies along proposed routes
- Safety

In March 2005 Tahltan leadership and technical advisors requested NovaGold look at a modified northern route (down Spahler Creek)

NovaGold is reviewing this option at a scoping level



NovaGold Resources Inc.

Galore Creek Gold-Silver-Copper Project Building Relationships with Local Communities

2004

- Supported formation of RTEC
- Opened Dease Lake Office
- 50% of field workforce was Tahltan
- Engaged Tahltan companies (Spatisizi and TNDC)
- Open houses in communities in June and October



2005

- Participated in Special Assembly held Jan 8th and 9th 2005 in Dease Lake
- Training courses for environmental monitoring, drillers helper and first aid
- Recently initiated Traditional Knowledge Study
- Initiating Socio-economic baseline study
- Additional open houses



Contact Ann Fraser at the Dease Lake office to put your resume in the database

Phone: 250-771-5227

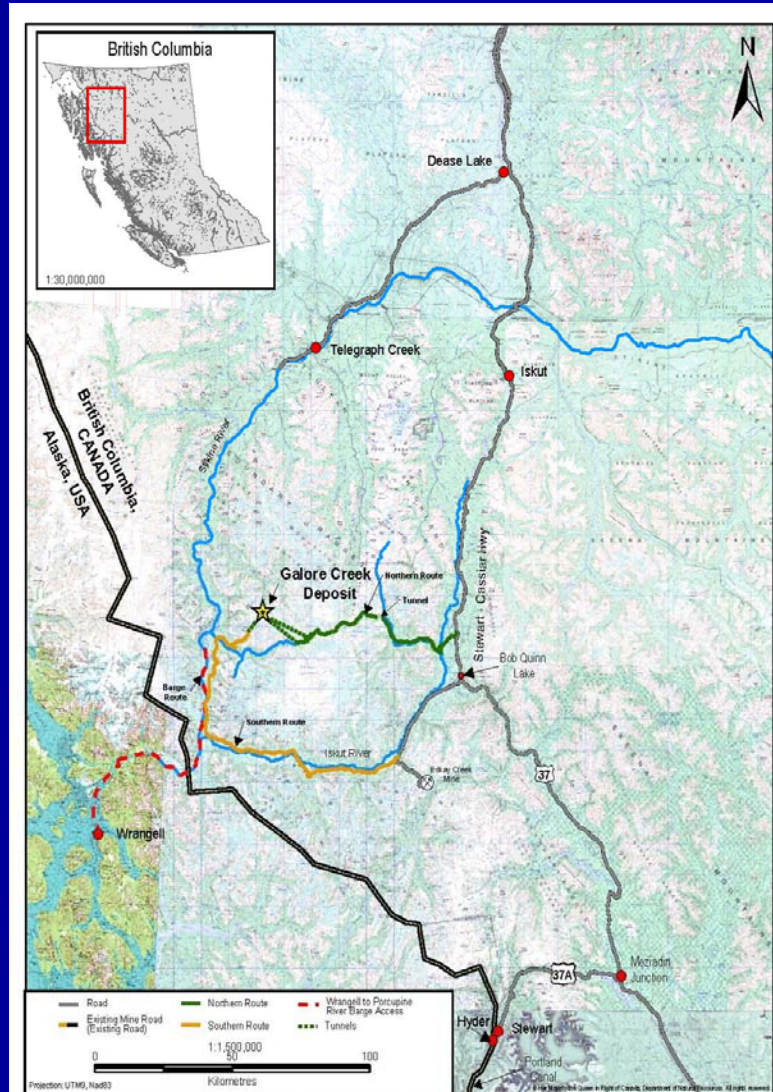
E-mail: ann.fraser@novagold.net

NovaGold is working to put your local community to work!



NovaGold Resources Inc.

Galore Creek Gold-Silver-Copper Project Location



Located in Tahltan Traditional Territory

75 km northwest of Eskay Creek Mine

85 km southwest of Telegraph Creek

110 km southwest of Iskut

150 km southwest of Dease Lake

167 km northwest of Stewart



NovaGold Resources Inc.

Galore Creek Gold-Silver-Copper Project Proposed Mine Method/Process

Open Pit Mining:
Using Truck and Shovel

Mining Rate:
30,000 to 60,000 tonnes per day of ore
60,000 to 120,000 tonnes per day of waste



Milling:
Conventional Copper Mill
Producing Concentrate
3 stages: crushing, grinding, flotation



Annual Production:

300,000 to 600,000 tonnes
of copper concentrate

Trucked to Stewart for shipping from port

