

3. Consultation

The *British Columbia Environmental Assessment Act* (BCEAA) and the *Canadian Environmental Act* (CEA) contain provisions for both First Nation and public consultations as a component of the environmental assessment process. This chapter summarizes the program of First Nation, public and government consultation undertaken to date, as well as the plan for future consultation.

3.1 First Nation Consultation

3.1.1 Summary and Evaluation of Tahltan Consultation Activities

The Galore Creek Project falls within the Traditional Territory of the Tahltan Nation, and therefore the focus of the First Nation consultation has been with the Tahltan Nation. As discussed in the following text, NovaGold initiated discussions with the Tahltan Nation in November 2004, within two months of signing a deal to explore Galore Creek. After ongoing meetings and discussions with Tahltan leadership and Tahltan members, a Participation Agreement was ratified by the Tahltan Nation and signed on February 10, 2006. The agreement supports the Tahltan Nation's principles of environmental stewardship, economic sustainability and self-determination. It also commits both parties to working collaboratively throughout the Environmental Assessment review and the permitting process for Galore Creek. The agreement commits NovaGold and the Tahltan to enhance and deepen their already strong relationship. It will provide certainty for local communities and investors alike that Galore Creek will be developed with the support and involvement of the Tahltan Nation.

NovaGold hired a Tahltan Senior Project Coordinator who works out of the Dease Lake office established on the Dease Lake Reserve. NovaGold also hosted open houses in the communities of Iskut, Dease Lake and Telegraph Creek in June 2004, October 2004, May/June 2005 and October 2005. The open houses provided an opportunity for Tahltan to gain information about the project and to provide input into the proposed development. As well, at the request of the Tahltan, NovaGold hosted a special assembly in Dease Lake in January 2005, which focused on the Galore Creek Project. NovaGold has also published newsletters on the Galore Creek Project, which are distributed into the mailboxes of all residents in Iskut, Dease Lake and Telegraph Creek. NovaGold funded a Traditional Knowledge project with the Tahltan Central Council for the Galore Creek Pilot Project, which focused on gathering historical traditional knowledge in the Galore Creek area. The Tahltan also provided a Tahltan name to one of the main helicopters supporting the Galore Creek Project.

NovaGold has funded members of the Tahltan Heritage Resource Environmental Assessment Team (THREAT) and their technical advisors to participate in the government meetings and technical working groups associated with the pre-application stage review of the EA process (see discussion under Section 3.3.2.2, Technical Working Groups).

3.1.2 General

NovaGold recognizes that local community involvement and support of mineral development projects is key to the success of the project. NovaGold entered into an option agreement on the Galore Creek property in August 2003. Within two months of signing the option agreement, the President & CEO of NovaGold and the VP of Corporate Development for NovaGold travelled to Dease Lake to meet with the Chair of the Tahltan Central Council, the Chief of the Tahltan Band, a Tahltan Nation councillor and an Iskut Nation Councillor (who is now Chief) to discuss the Galore Creek Project and to begin establishing a relationship with the Tahltan. In early 2004, NovaGold wished to hire a Tahltan project coordinator and requested suggestions from the Chair of the Tahltan Central Council and Chiefs of the Tahltan Band and Iskut First Nation. Candidates were interviewed, and in April 2004 NovaGold hired a Tahltan Senior Project Coordinator for the Galore Creek Project. At the same time, NovaGold established an office on the Dease Lake Reserve.

As part of its commitment to working with local communities, NovaGold expects and supports its consultants and contractors to work closely with the communities. In early meetings with the Tahltan, NovaGold agreed to support the formation of joint ventures between consultants working for NovaGold and the Tahltan. This led to the formation of Rescan Tahltan Environmental Consultants (RTEC), a 50/50 joint venture between Rescan Environmental Services Ltd. and the Tahltan Nation Development Corporation (TNDC), in May 2004. RTEC combines Rescan's environmental expertise with TNDC's regional expertise. Both companies see the RTEC venture as an opportunity to meet their business goals and mandates and to contribute to sustainable development practices in the resource sector. RTEC is headquartered in Dease Lake Reserve and has two full-time staff. During the 2004 and 2005 field seasons, RTEC took the lead in collecting, assembling and interpreting all baseline data and information for the development of the Galore Creek Environmental Assessment Report. These baseline programs examined several environmental components: climate, streams and rivers, water quality, fish and fish habitat, and wildlife. With the support of NovaGold, RTEC hired a total of 11 field assistants/technicians to assist with the environmental monitoring.

NovaGold collaborated with RTEC and Kwantlen University College to develop a learning/training program geared toward the Tahltan community. Kwantlen has a well-recognized Environmental Protection Technology Program and has offered its expertise in the development of the training course. The new program combined classroom study and field training focusing on the principles of geology, hydrology and air quality, as well as hands-on training in sampling methods of environmental media (air, water, soils, vegetation). Plates 3.1-1 and 3.1-2 were taken during the class graduation for the course.



Plate 3.1-1 Kimberley Lee, Tahltan member, receives Statement of Completion Certificate for Basics in Environmental Monitoring Course. Kimberley worked at Galore Creek during the 2005 field season.



Plate 3.1-2 Tahltan graduates from the Environmental Monitoring Course. Representatives from Rescan, NovaGold and Kwantlen College are also in photo.

Upon the formation of RTEC, both TNDC and Rescan recognized the need for a logo to represent the fusion of Rescan's scientific know-how with the Tahltan's regional expertise and traditional knowledge. The RTEC logo (see Plate 3.1-3) includes the phrase "keepers of the land" to underline the theme of environmental stewardship and to emphasize the Tahltan tradition of environmental stewardship – Tahltan elders think of themselves as keepers of the land. The logo is also an adaptation of the clan emblems used by the Tahltan tribe. Two major clans belong to the Tahltan tribe, the Wolf and the Crow. Clans (and clan symbols) carry significance because traditional Tahltan life was structured around the family/clan system. Tahltan society was matrilineal, meaning that clan ancestry was always traced through the mother's side of the family. One's clan ancestry determined whom one could marry; all marriages were between clans, never within the same clan.



Plate 3.1-3 RTEC Logo

3.1.3 Special Assembly

At the request of the Tahltan Central Council (TCC), NovaGold hosted and participated in a special assembly in Dease Lake, held over a weekend in January, 2005, that included more than 120 Tahltan people. The assembly was organized by the Tahltan Central Council. The assembly began with a dinner at the Dease Lake Community Hall on Friday January 7. Following breakfast and an opening prayer, TCC Chair Curtis Rattray welcomed the community and guests and outlined the purpose of the special assembly. As taken from the Message from the Chairman (Rattray, 2005), the objectives of the assembly were as follows:

1. *To educate Tahltan members about the issues and words being used in this work, this includes aboriginal rights and title, environmental and social impacts from mining*
2. *To have NovaGold inform our members about the Galore Creek project*
3. *Allow Tahltan members to tell the Tahltan elected leaders, the province and the mining company about how they feel about the project, their concerns about the impacts and ideas how to lessen the impact.*

After the welcoming comments, three workshops took place:

1. *Aboriginal Rights and Title*, presented by two lawyers who are Tahltan Nation members
2. *Environmental Impacts and Mining*, presented by a mining engineer who is a Tahltan Nation member
3. *Social Impacts of Resources Development*, presented by consultants.

Late in the afternoon, the VP Corporate Development for NovaGold delivered an overview presentation of NovaGold and the Galore Creek Project. This was following by a community dinner and entertainment provided by the Tahltan Dancers from Telegraph Creek (see Plate 3.1-4 below).



Plate 3.1-4 Dancing at Special Assembly.

After breakfast on Sunday, NovaGold continued with its presentations on the Galore Creek Project. After lunch, community members were asked to provide feedback on the project. The special assembly was filmed, and complete transcripts are available from the meetings.

Highlights of comments/concerns raised by the Tahltan Nation Community include:

- safety of the proposed northern route, including the tunnel
- alternatives to the road, *i.e.*, rail, cargo lifts
- NovaGold's relationship with the B.C. government
- potential for additional deposits at site and expansion of mine site
- consultation with First Nations and involvement of elders
- incorporation of Traditional Knowledge into project studies
- southern route opening up access to the Stikine
- concerns about the rate of development of projects in Tahltan Traditional Territory.

Many Tahltan emphasized that no monetary value can replace their land and the ties to the land; and that there needs to be a balance between progress and impact to the land. As well, several Tahltan thanked NovaGold for supporting the special assembly and for their willingness to come

and share information on the project. One Tahltan elder indicated it was the first time he had seen a company involve the Tahltan and incorporate their input at the start of a project.

The TCC provided an information package to all Tahltan for the meeting. This package included the agenda for the special assembly; a message from the Chairman of the TCC; the Declaration of the Tahltan Tribe and territory map; the Tahltan Natural Resource Development Policy; the TCC Board of Directors; the TCC constitution and by-laws; TCC travel expense policies; and a presentation on mining and the environment, considering the social impacts of resource development on the Tahltan Nation. NovaGold provided funding for Tahltan members to travel to the meeting from Iskut and Telegraph Creek, as well as for some members to travel from destinations outside of the Tahltan Traditional Territory. NovaGold had a three-dimensional model of the access routes into the proposed mine development area, and found it a useful tool for people to relate to the project (see Plate 3.1-5).



Plate 3.1-5 Review of the model at the Special Assembly

3.1.4 Participation Agreement

NovaGold initially met with Tahltan elected officials in the fall of 2003 to introduce NovaGold and the Galore Creek Project to the Tahltan. In early 2004, the President and the VP of Corporate Development for NovaGold met with Tahltan leadership to discuss the overall approach to a participation agreement, the principles to guide the agreement and items to be included in an agreement. At this time, both NovaGold and the Tahltan agreed that NovaGold would prepare a draft agreement for the Tahltan to review. In May 2004, NovaGold tabled a

draft agreement with the Tahltan leaders. At a July meeting, the Tahltan leaders indicated they were preparing a standard participation agreement for resource development in their traditional territory and would table a draft copy for NovaGold to review by November 2004. In early 2005, the Tahltan Central Council, with the support of the Tahltan and Iskut First Nations, took the lead on negotiating a participation agreement with NovaGold and appointed a team of negotiators. In early 2005, a negotiation agreement was signed, which included NovaGold's support of the negotiating teams. Negotiations continued until late September when a draft agreement in principle was signed by the chair of the TCC and the Tahltan and Iskut chiefs. This document was presented to the TCC board of directors and representatives of the Tahltan Band in Dease Lake in October. At this time, approval was given for the TCC negotiation teams to present this information to Tahltan members. An information package was circulated to Tahltan members via mail, and invitations were extended for meetings being held in November in the following communities: Dease Lake, Telegraph Creek, Iskut, Whitehorse, Terrace, Smithers, Prince George, Fort St. John and Vancouver. After the meetings, a vote was held to ratify the agreement, and a final agreement was signed on February 10, 2006.

The participation agreement supports the Tahltan Nation's principles of environmental stewardship, economic sustainability and self-determination. It also commits both parties to working collaboratively throughout the Environmental Assessment review and permitting process for Galore Creek.

The agreement commits NovaGold and the Tahltan to enhance and deepen their already strong relationship. It will provide certainty for local communities and investors alike that Galore Creek will be developed with the support and involvement of the Tahltan Nation.

Highlights of the agreement include:

- recognition of the Tahltan's traditional rights, title and interests to the project area as well as NovaGold's rights to explore and develop mineral resources in the Galore Creek Valley
- mutual cooperation to complete an efficient and effective environmental review and permitting process and commitment to mitigate adverse environmental impacts caused by the mine
- establishing measures and procedures that will fully engage the Tahltan in all aspects of environmental protection
- maximizing training and employment of Tahltan members throughout the mine life and to create processes for ongoing dialogue about advancement
- ensuring access for Tahltan businesses to maximize business opportunities for the supply of goods and services throughout the mine life and during mine closure
- financial contributions by NovaGold to the Tahltan Heritage Trust Fund, which will be used to mitigate any adverse social and cultural impacts of mine development. During mine operations, Trust Fund payments are guaranteed to be no less than \$1,000,000 annually. Upon reaching certain agreed financial targets, and subject to positive mine

operating cash flow, the trust will receive the greater of \$1,000,000 or a 0.5% to 1.0% net smelter royalty each year.

- Tahltan assurances to investors and support for the project as NovaGold arranges financing during the year ahead.

The agreement will remain in effect throughout the life of the Galore Creek Project and will be binding on any future operator of the mine.

On April 1, 2006, a celebration of the signing of the Participation Agreement was held in Dease Lake. The opening prayer was followed by the Tahltan Dancers. A history of the Participation Agreement was reviewed by one of the Tahltan negotiators, and the Ceremonial Wall Hanging was unveiled. This was followed by a community dinner. The theme of the celebration and the wall hanging was “Tahltan Nation & NovaGold – Working together to be dene lani etie,” which means working together to be the best people we can be. The Ceremonial wall hanging will never leave Tahltan Traditional Territory and will hang at the Galore Creek property during the mine life (see Plate 3.1-6 below).



Plate 3.1-6 Ceremonial wall hanging with Jerry Asp (Chief Tahltan Band), Rick Van Nieuwenhuysse (President & CEO NovaGold), Curtis Rattray (Chair Tahltan Central Council) and Marie Quock (Chief Iskut First Nation).

3.1.5 Open Houses

In conjunction with ongoing meetings with Tahltan leadership, NovaGold hosted several open houses in the local communities in 2004 and 2005.

June 2004

Locations

During the week of June 5, 2004, SpectrumGold (now NovaGold) hosted community meetings in the four communities nearest the Galore Creek Project in northwestern B.C. This included the predominantly Tahltan communities of Dease Lake, Iskut and Telegraph Creek, plus Stewart. This section discusses the meetings in the Tahltan communities.

Community	Venue	Date	Time
Dease Lake	Community Hall	Tuesday June 8	5 – 9 p.m.
Iskut	Community Hall	Wednesday June 9	3 – 7 p.m.
Telegraph Creek	Community Hall	Thursday June 10	3 – 7 p.m.

Advertisements

Posters advertising the event were placed in central areas (post office, gas stations/food store, hotels) in every community prior to the meetings. Copies of the posters can be found in Appendix 3-A, *Galore Creek Gold-Silver-Copper Project Open Houses June 2004*.

Format

Representatives from NovaGold (VP Corporate Development, Land & Environmental Manager, Senior Project Coordinator) and the B.C. Environmental Assessment Office (BCEAO) attended each meeting. Community members were welcomed to the open house by a company representative. NovaGold had a series of large posters on display around the room (see Appendix 3-A), as did the BCEAO. In addition, NovaGold distributed handouts and annual reports (see Appendix 3-A) and the BCEAO provided brochures available describing the assessment process. Attendees to the meeting were asked to sign in, and comment sheets were available to be completed. Approximately half-way through the open house, the VP Corporate Development from NovaGold delivered a PowerPoint presentation summarizing the project. Questions were encouraged during the presentation.

Summary

Overall a total of 87 people signed in to the meetings, and 15 people filled out the comment sheets. All agreed that they found the open houses informative and that they would attend other open houses. Topics that people wished to hear more about included the environment, access, community funding and employment opportunities.

Community	No. in Attendance	No. of Comment sheets
Dease Lake	25	6
Iskut	34	7
Telegraph Creek	28	2

October 2004

Locations

During the week of October 18, 2004, NovaGold hosted community meetings in seven different towns in northwestern B.C. and Alaska. This section will only discuss the meetings held at Iskut, Telegraph Creek and Dease Lake.

Community	Venue	Date	Time
Iskut	Community Hall	Monday Oct. 18	5 to 7 p.m.
Telegraph Creek	Community Hall	Tuesday Oct. 19	11:30 to 1:30 p.m.
Dease Lake	Community Hall	Tuesday Oct. 19	4 to 6 p.m.

Posters advertising the event were placed in central community areas (post office, gas stations/food stores, hotels). Copies of the posters can be found in Appendix 3-B, *Galore Creek Gold-Silver-Copper Project Open Houses October 2004*.

Format

The format of each meeting was similar, and all were as similar to the meetings held in June. Representatives from NovaGold (VP Corporate Development, Land & Environmental Manager, Senior Operations Manager, Senior Project Coordinator), Rescan Tahltan Environmental Consultants (RTEC) (Project Manager, Project Scientist) and the B.C. Environmental Assessment Office (BCEAO) (Project Assessment Director) attended each meeting. Community members were welcomed to the open house by a company representative. NovaGold had a series of large posters on display (see Appendix 3-B), as did RTEC and the BCEAO. In addition, NovaGold distributed handouts and annual reports (see Appendix 3-B). The BCEAO also had brochures available describing the assessment process. Attendees to the meeting were asked to sign in. Approximately half-way through the open house, the VP Corporate Development delivered a PowerPoint presentation summarizing the project. Questions were encouraged during the presentation.

Summary

A total of 63 people attended the open houses, yet only 6 filled in the comment sheets.

Community	No. in Attendance	No. of Comment Sheets	General Comments
Iskut	17	5	Food provided by grade 5/6 class as fundraiser
Telegraph Creek	25	1	Food provided by hockey team (age 9-12) as fundraiser
Dease Lake	20	0	Food provided by grade 5/6 class as fundraiser

Given the stage of project development planning at the time of these meetings, there was significant emphasis on and discussion of the two access options being reviewed. Some of the other comments and questions are listed below.

- Preference for the northern route based on the environment and proximity for workers, although concerns with regard to safety and the tunnel
- Environmental concerns for the salmon in the Stikine, importance of salmon to Tahltan
- Impacts to family structures as result of shift work; suggestions for daycare at the mine site and on-site counselling
- Concerns about the open pits and about open pit versus underground mining
- Some do not wish to see mining in the area
- Employment opportunities (Tahltan versus non-Tahltan), company willingness to provide assistance to people not wanting to work in the mine, yet wishing to start businesses
- Possibility of the company supporting education, recreation and cultural events
- Tahltan involvement in the EA process; Elder involvement
- What happens to the road and access after mine closure
- Is the company prepared to deal with environmental disasters such as avalanches, earthquakes, *etc.*
- Will cyanide be used in processing; can the ore be hauled out and milled elsewhere
- Good idea the mine is being developed – will provide much needed employment
- Support for the southern route, suggesting the extra money saved could be spent on the communities
- Training and employment
- Frequency of trucks, material carried, quality of Highway 37 and control of the road
- Hiring procedure.

May/June 2005

Locations

NovaGold hosted community meetings in Dease Lake and Iskut in spring 2005. Attempts were made to host a meeting in Telegraph Creek but because of internal governance issues within the Tahltan First Nation, this was deferred.

Posters advertising the event were placed in central areas (post office, gas stations/food store, hotels) in each community prior to the meetings. Copies of the posters can be found in Appendix 3-C, *Galore Creek Gold-Silver-Copper Project Open Houses May/June 2005*. In early June NovaGold had decided to focus on the so-called modified northern access route, and so the posters/handouts at the Iskut meeting reflected this change.

Format

The format during each meeting was similar. Representatives from NovaGold (Galore Creek General Manager, Land & Environmental Manager, Senior Project Coordinator) attended each meeting. NovaGold had a series of large posters on display and handouts available (see Appendix 3-C). For these meetings, NovaGold decided to focus on one-on-one discussions because many people “dropping in” to the previous open houses had missed the formal presentation.

Summary

A total of 18 people attended the open houses. No one filled in the comment sheets.

Community	Venue	Date	Time
Dease Lake	Community Hall	Tuesday May 31	5 – 7 p.m.
Iskut	Community Hall	Monday June 20	3 – 6 p.m.

October 2005

Locations

During the week of October 17, NovaGold hosted community meetings in Dease Lake, Telegraph and Iskut. Posters advertising the event were placed in central areas (post office, gas stations/food store, hotels) in each community prior to the meetings. Copies of the posters can be found in Appendix 3-D, *Galore Creek Gold-Silver-Copper Open Houses October 2005*.

Format

The format during each meeting was similar. Representatives from NovaGold (Galore Creek General Manager, Land & Environmental Manager, Senior Project Coordinator) attended each meeting. NovaGold had a series of large posters on display and handouts available (see Appendix 3-D).

Summary

The one-on-one discussions with community members focused on NovaGold’s decision to pursue the northern access route; negotiation of the Participation Agreement; and employment opportunities. Two of the posters depicted local Tahltan/community members who had worked at Galore in 2005 (+100). This generated a great deal of discussion and comment because most people at the open houses were either related to or knew of the people in the posters. Attendees to the meeting were asked to sign in. No one filled in the comment sheets.

Community	Venue	Attendance	Time
Dease Lake	Community Hall	14	5 to 7 p.m.
Telegraph Creek	Community Hall	8	4 to 6 p.m.
Iskut	Community Hall	9	4 to 6 p.m.

3.1.6 Integration of Traditional Knowledge

NovaGold recognizes that individuals and families who are most dependent on local resources for spiritual, cultural and basic needs are often best positioned to not only articulate the importance of certain places and spaces, but also to share valuable knowledge that is grounded in learned experience. In this light, in the winter of 2003, NovaGold began working with Tahltan community members and Tahltan Elders as a means of gathering Traditional Knowledge.

3.1.6.1 Definition

Traditional Knowledge is dynamic. Taking many shapes and forms of expression, it is articulated through the visual and physical arts; it is shared in song and story; it is expressed through cultural practices and rituals. Traditional Knowledge is unique to each cultural group, but there is no one all-encompassing “Traditional Knowledge” shared by all members of the group. Rather, the breadth and scope of traditional knowledge encompasses the multiple accumulated knowledge of individuals. Gender, age and status in a community influence the types of knowledge that a person acquires, how it is used and how it is shared. As explained to NovaGold by the Tahltan Central Council, Tahltan Traditional Knowledge refers to:

“...contemporary and generations-old knowledge accumulated and applied through generations of living in close contact with nature, including Aboriginal environmental knowledge, traditional ecological knowledge, traditional knowledge, local knowledge, indigenous environmental knowledge, land use and occupancy knowledge, empirical observations about the local environment, systems of land tenure, classification and self-management governing use of resources, traditions, beliefs, legends and customs, and that is in oral, written, or machine-readable form” (Tahltan Central Council, December 2005).

The continuation and inter-generational transference of Traditional Knowledge through participating in customs such as culturally specific modes of subsistence – hunting, fishing, trapping, gathering, herding – “...provide[s] native communities with a perception of themselves as distinct cultures, confirming continuity with their past and unity with the natural world...” (IUCN/UNCEP/WWF, 1991). Therefore, in its various forms, Traditional Knowledge reiterates cultural customs, practices and historical memory and attaches cultural identity to place and space.

3.1.6.2 Tahltan Traditional Knowledge Research Program

In 2005, NovaGold employed two Tahltan community researchers to undertake desk- and field-based research. Additionally, in the fall of 2005, NovaGold funded the archival Galore Creek Pilot Project (see Section 3.1.6.4) to permit a Tahltan archivist to work full-time collecting, documenting and transcribing Tahltan Traditional Knowledge.

Program Objectives

The objectives of the Tahltan Traditional Knowledge research program for the Galore Creek project were to:

- complete a comprehensive qualitative and quantitative study

- build relationships with the Tahltan Nation
- create opportunities for capacity- building among Tahltan community researchers
- develop the beginnings of a Tahltan Traditional Knowledge archive
- consider and incorporate Tahltan Traditional Knowledge provided by the Tahltan Nation into the planning and decision-making for the EA Application and as it relates to completing the EA.

NovaGold completed a number of studies that involved obtaining insights, views and information from Tahltan community members and Tahltan Elders:

- In the winter of 2004-2005, scientists worked with Tahltan trappers, guide outfitters and hunters to acquire information about wildlife use of the Galore Creek Valley and associated valleys. The purpose of the wildlife consumptive study was to assess the presence/not detected, relative abundance and observed population trends of consumable wildlife species.
- In November and December 2005, a Tahltan community researcher interviewed 10 Tahltan Elders to determine which country foods are currently collected; the purpose for which they are used (*i.e.*, nutritional, medicinal or both); which part of the country food is used; what quantities are used; and how often. Details are provided in the Country Foods Baseline report (see Appendix 6-T).

These studies were particularized to a specific scope and therefore did not discuss wider topics such as socio-economics, cultural values and so forth. However, when added to the research completed by the Tahltan Traditional Knowledge research team and the Galore Creek Pilot Project, the information proved invaluable in determining Tahltan Valued Ecosystem Components (VECs) for effects assessment.

Research Methods

The Tahltan community researchers drew on a variety of standard social science methodologies to obtain quantitative and qualitative data. At the onset of the studies, the Tahltan researchers reviewed the following primary and secondary sources:

- Albright, Sylvia L. 1984. Tahltan Ethnoarchaeology. Department of Archaeology, Simon Fraser University, Burnaby, B.C.. Publication Number 15.
- Dawson, George. 1887. "Notes of the Indian Tribes of the Yukon District and Adjacent Northern Portion of British Columbia". In: *Annual Report of Geological Survey of Canada*; 1887.
- Emmons, G.T. 1911. The Tahltan Indians. In: *University of Pennsylvania The Museum of Anthropological Publications* Vol. IV, No. 1.
- Gardner, James S. General Environment. In: *Handbook of North American Indians*, Vol. 6. Subarctic. Gen. Ed.: Sturtevant, W.C.; Volume Ed.: Helm, June. 1981. Smithsonian Institute Washington, D.C. Pp.: 5-14.

- MacLachlan, Bruce. Tahltan. In: Handbook of North American Indians, Vol. 6. Subarctic. Gen. Ed.: Sturtevant, W.C.; Volume Ed.: Helm, June. 1981. Smithsonian Institute Washington, D.C. Pp.: 458-467.
- Tahltan Native Studies. 1970. Stikine School District #87.
- Teit, James. Tahltan Tales. In: *Journal of North American Folklore*. Vol. 34, July-September, 1921. No. 133. New Era Printing; Lancaster PA.

Upon completion of the literature review, the researchers conferred with key Tahltan community leaders to assemble a list of potential Elders who they felt were best suited to participate in and contribute to the study. Recognizing that there are numerous types of knowledges, ecological – and gender-specific, for example, and striving to complete a holistic study, the researchers sought out Elders who offered different yet complementary information. Tahltan Traditional Knowledge study participants included trapline holders, big game outfitters, hunters, prospectors, matriarchs of high-ranking families and researchers from the Tahltan 1983-1985 Land Use and Occupancy Study. Twenty-two Tahltan Elders were earmarked as key contributors – eighteen men and four women. Field research was initiated in the summer of 2005.

The Tahltan Traditional Knowledge research team endeavored to acquire a broad spectrum of information: land use, travel and transportation routes (aquatic and terrestrial); identity, cultural practices, customs, songs, dances and stories about high-powered animals; location of cultural heritage sites, wildlife trails and fishing spots; weather patterns, including heavy snow and rain fall years; seasonal subsistence rounds and methods for processing foods; and division of labour. Overarching themes and interview questions were developed to help guide the discussions. Field research methods varied depending on the individuals being interviewed and included participant observation, semi-structured and structured interviews and life history methods.

The general field plan entailed visiting Tahltan Elders participating in the study at least three times over the course of the summer. The first meeting was to introduce the Tahltan Elder to the NovaGold Galore Creek Project, to approach them about participating in the Tahltan Traditional knowledge study and explain to how Tahltan Traditional Knowledge would be used in the EA. At the end of the first meeting, a mutually agreed upon interview date, location and time was established for the second meeting, which was then held at the predetermined place and time.

The night before the second meeting, the Elder was contacted to discuss which methods they preferred (structured interview, discussion, participant observation). Most of the field research was undertaken during the summer of 2005 and winter 2005/2006. The field research during the summer of 2005 was done when the fish were running. Consequently, many Elders were busy working in summer fishing camps. When this was the case, the researchers assisted in land-based economic activities such as processing fish or harvesting berries, while also engaging the Elder in discussions.

The interviews sometimes involved more individuals than just the Tahltan Traditional Knowledge research team and the participating Elder. At the onset of each discussion, the purpose for the discussion and the use of the Tahltan Traditional Knowledge was explained or reiterated.

Whenever possible, interview sessions were digitally (audio and video) recorded. All interviews, even those held while undertaking land-based activities, were transcribed and provided to the Tahltan Elder for their review and comment. Additionally, whenever possible, Tahltan Elders were asked to create cognitive maps at highlighted areas they viewed to be of importance. Direct personal interviews were conducted in areas around Dease Lake, Telegraph Creek, Tahltan Village and Dawson City, whereas telephone interviews were conducted with Tahltan Elders living in Smithers, Prince Rupert and Terrace.

The third meeting was scheduled much later, once the interview notes had been transcribed. The researchers returned to meet with the Elder and present, review and discuss the Traditional Knowledge transcription. Researchers verified that the written document appropriately reflected the discussion. Permission to use the information as presented in the written format was confirmed.

Traditional Knowledge research often proves to be challenging. The Galore Creek Tahltan Traditional Knowledge studies were no exception. During the summer of 2005, the Nation was confronted by a number of losses – some respected Elders passed away and there were some suicides. Adding to this was a climate of internal political conflict; many Tahltan Elders were hesitant to participating in the study, expressing a discomfort with the research. Tahltan Traditional Knowledge researchers developed and utilized a tracking document to record their attempts. Of the 22 identified Elders, 10 interviews were completed.

3.1.6.3 Use of Traditional Knowledge in Project Description

Tahltan Traditional Knowledge will be used throughout the NovaGold project cycle. Following is a brief overview of the ways that Tahltan Traditional Knowledge was included in the EA:

- NovaGold's decision to select the modified northern access route over to the southern access route was based heavily on information provided by Tahltan Traditional Knowledge, including the importance of the Iskut and Stikine rivers, the fish and wildlife habitats, the wetlands and the vegetation found along the southern route.
- A number of Tahltan Elders spoke to the increased observation of wildlife apparently suffering from neurological impairment (bears, for instance). During the wildlife consumptive interviews, Tahltan Elders expressed concern over the toxic impacts the Galore Creek Project could have on wildlife if the concentrate were to spill into the environment. NovaGold acknowledged these concerns and incorporated pipelines rather than truck transport to pump the concentrate from the process plant to Highway 37 and to supply diesel to site. This will significantly decrease the number of trucks on the access road.
- A number of wildlife and aquatic VECs were identified or confirmed through interviews with Tahltan Elders. Examples are groundhog and martin.
- Water management options, such as the timing of discharges from the tailings storage facility, were guided by the needs of aquatic life (*e.g.*, pacing discharges from the storage facility to match natural flow conditions). Traditional Knowledge interviews emphasized

the economic importance of fish and the importance of preserving the integrity of aquatic resources.

- Interviews with Tahltan Elders provided information about seasonal rainfalls, specifically, when heavy rains usually occur. This information helped guide water management options for discharges from the tailings storage facility.
- Interviews with Tahltan Elders confirmed the importance of protecting hunting grounds and wildlife stocks in the localized study area. The Participation Agreement between NovaGold and the Tahltan provides for the development of a road protocol to address concerns about use of the road.
- Traditional Knowledge provided NovaGold with an understanding of traditional land use in both the broad Cassiar Iskut-Stikine region and the local project area. This information was used during numerous baseline studies. For example, heritage sites known to Tahltan Elders were identified and then confirmed during the archaeological assessment.

After construction commences, NovaGold will consider and use Tahltan Traditional Knowledge as it relates to project planning, design and implementation, including environmental policies, management plans and management systems, in making permit applications.

3.1.6.4 Galore Creek Pilot Project

As part of the Tahltan Central Council Kime Traditional Knowledge project, NovaGold funded a data and documentation archive project focused in the Galore Creek area. The goal of the Galore Creek Pilot Project was to create a geographic-specific Traditional Knowledge repository and archive for Tahltan Traditional Knowledge based on the Tahltan Historical Land Use and Occupancy Study (1983-1985) and on current research resulting from interviews with members of the Tahltan Nation. All work abided by terms and conditions laid out in a Traditional Knowledge Protocol Agreement between NovaGold and the Tahltan Central Council. The project incorporated a variety of media (electronic, paper, sound recordings, mapping) into an integrated database capable of indexing, multi-keyword searching and ranking by relevance linked to a GIS system. The proposed geographic area would cover the southern half of NTS 1:250,000 Map Sheet 104G and the northern half of NTS 1:250,000 Map Sheet 104B.

Methodology

1. Tahltan Historical Land Use and Occupancy Study:

- located hard copies of the documents and maps associated with this study, as well as Oral Tradition tapes
- transported maps to Vancouver for digitization and reproduction
- prioritized, digitized and transcribed Oral Tradition tapes covering the geographic area
- located references in text/tapes to sites identified on digitized maps
- entered these sites into the integrated database.

2. Traditional Knowledge study as part of the Cassiar-Iskut Stikine Land and Resource Management Plan (CIS-LRMP):

- obtained maps and digital copy of the study from the Integrated Land Management Bureau, Skeena Region
- digitized data available from this study for incorporation into the database.

This work was supervised by the Manager of the Kime Traditional Knowledge Project. Promotion of the project within the community was also the responsibility of the Manager. This involved newsletters describing the project and the benefits of participating in it as a means of preserving Tahltan Traditional Knowledge as well as use and occupancy in a geographic specific area. This project also followed up and continued with the interviews that had originally begun in spring of 2005.

Results

Over 66 hours of tapes were digitized and transcribed from the Tahltan Historical Land Use and Occupancy Study. Focusing in on this work, over 70 locations identified on the maps were linked to the information contained within the tapes. From this, a map (Figure 3.1-1) showing the study area and corresponding table of information (Table 3.1-1) were created.

The digital copy of the database from the Traditional Knowledge Study associated with the CIS-LRMP could not be migrated to newer technology and was therefore not useable. After the completion of an extensive search, no transcripts or recordings of the original interviews with Elders from this study have been located at the Integrated Land Management Bureau, Skeena Region, or at the former offices of Tahltan Tribal Council.

**Table 3.1-1
Map Sheet Sites Identified by Tahltan People
from the 1983 to 1986 Study**

Map Number	Place	Description
120	Refuge lake (S)	This is an old line cabin called Nine Mile cabin.
122	Durham creek (N)	This creek is called sled or sleigh creek.
123	Devil lake	This lake is called Devil's lake.
124	Lake	From Devil's lake we go to One Mile lake.
125	Raspberry Pass (adjacent)	In Raspberry Pass, we had a hunting base camp.
126	Spectrum range	This is good sheep hunting range south of Raspberry Pass.
128	Mess creek (along)	We bumped into a grizzly near Mess lake one summer.
132	Scud river	Our home cabin was right at Scud Portage.
133	Scud river	Navo creek we call Eaglenest creek. Our first camp was here.
134	Scud river (along)	We trapped both sides of the Scud river right up to Scud glacier.
135	Saddle Mtn (NW)	I also trapped up this tributary of Scud river.
136	Scud river	We had a trapping camp on an island in the middle of the Scud. Snow slides are so bad in there that you have to camp in the middle of the valley.
138	Skud river	In the fall, there is thousands of coho in the Scud. You can get them right till freeze up. Some trout too. Grizzlies feed along here right into December.

(continued)

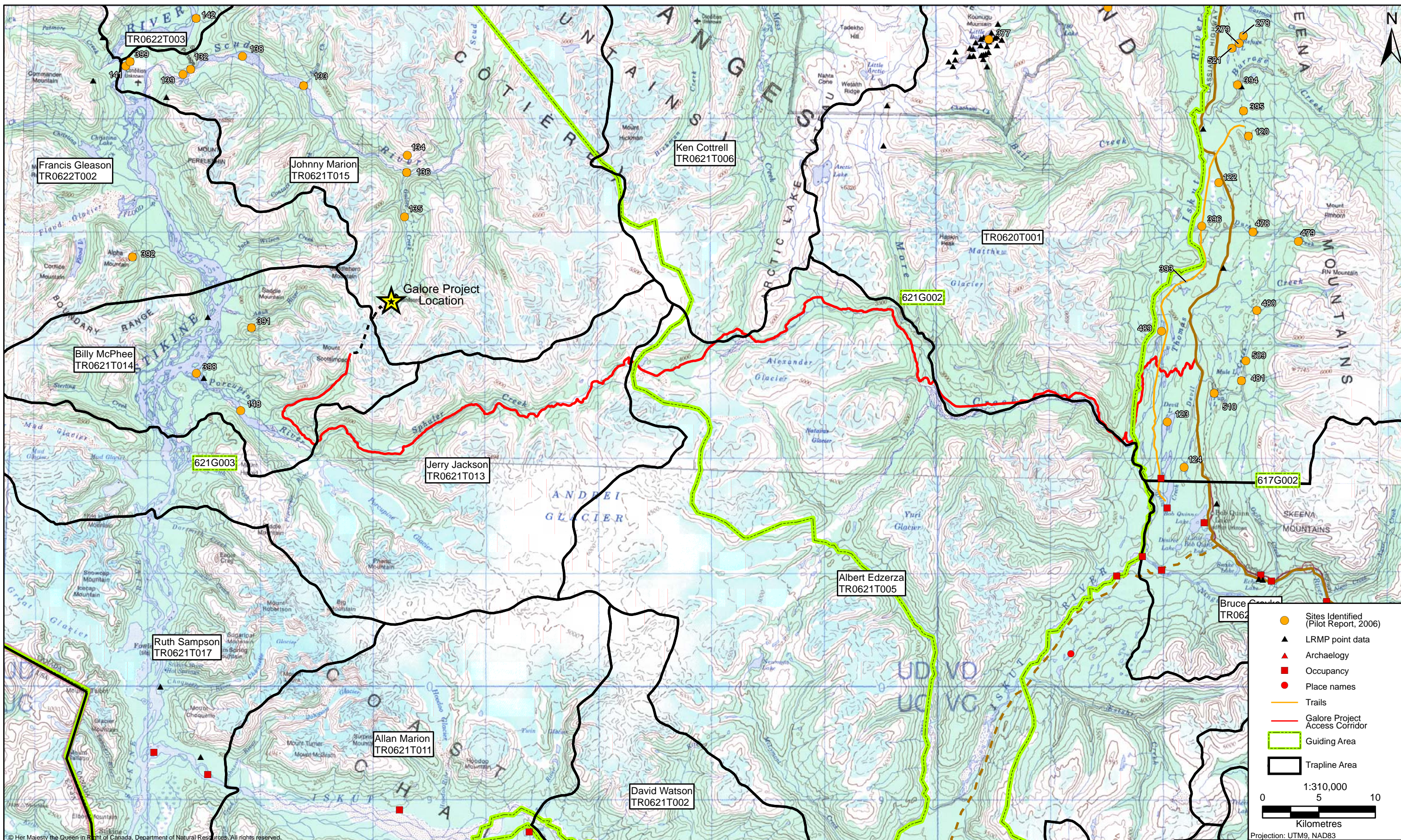
**Table 3.1-1
Map Sheet Sites Identified by Tahltan People
from the 1983 to 1986 Study (continued)**

Map Number	Place	Description
139	Scud river (along)	I had to shoot one grizzly at the cabin here. He was into the fish.
140	Klotchmen Mtn (below)	Trapping cabin here.
141	Scud river (mouth)	Just below Patmore creek another trapping cabin.
142	Cone Mtn (below)	Cabin here was called the cut-off cabin.
143	Little Canyon (upper)	Just above Little Canyon he had another little cabin.
144	Stikine river (along)	Trapping from Klotchman Canyon to Beaver Point.
147	Wiggle creek (W)	Trapping on the north side of the Chutine (Clearwater).
148	Porcupine river (on)	Trapping on the Porcupine.
160	Taweh	There is a hunting camp at the head of Big Sheep creek.
161	Buckinghorse creek (E)	Taweh creek is known as Sheep creek.
216	Klotchman Canyon (above)	The Stikine river is pronounced _____ (115) meaning "that the water is so rough it's like its boiling or fighting and biting".
227	Raspberry Pass (N)	From 10 mile, an old Tahltan trail goes up Mess creek and over to Kinaskan.
263	Night Out Mtn (top)	There is another campsite here.
264	Yehiniko lake	Yehiniko lake is called _____ (155) meaning "Glacier lake". That's as far as I been down this way.
265	Yehiniko creek N (end)	At the outlet of Yehiniko lake there is a hunter's camp.
266	Yehiniko creek (near)	I know Yehiniko creek as Glacier creek.
267	Yehiniko creek (near)	There is a sheep lick here.
268	Taweh	Where Taweh creek crosses the Telegraph line there is a cabin.
269	Raspberry Pass (N)	On Raspberry creek at the line, there is a cabin.
270	Raspberry Pass (adjacent)	In Raspberry Pass near timberline, there is another cabin.
276	Little Iskut river (along)	This creek is known as Little Iskut river.
277	Spectrum range (E)	This mountain is called _____ (422) because when the people in the south can't get game, they rush to this mountain to get goats.
278	Refuge lake (around)	There is a cabin at the outlet of Refuge lake.
279	Refuge lake	Refuge lake has always been called that.
280	Chutine river (mouth)	The boundary follows the Stikine up from the Iskut to the mouth of the Clearwater (Chutine) then up the Clearwater.
291	Beginning of trail (Chutine river)	There is a village site here near the mouth of Clearwater. They fish here.
292	Ugly creek (E)	Twenty miles up the Clearwater, shown as Chutine on the map, there is a village and fish site.
293	Pendant creek (mouth)	The Chutine river is called _____ (897). It is locally known as Clearwater.
300	Raspberry Pass	Around Raspberry Pass, we hunted goat, sheep, moose, caribou and bear.

(continued)

**Table 3.1-1
Map Sheet Sites Identified by Tahltan People
from the 1983 to 1986 Study (completed)**

Map Number	Place	Description
310	Mink creek or Spatsizi river NE	Guiding from Glenora to Chutine for grizzly hunters.
322	Wiggle creek (E)	From Telegraph to Clear water is a preferred hunting area year round.
328	Mess creek	Sheep come off Stingy mountain right down to the canyons of Mess creek.
330	Raspberry creek	There is a great big lick in this basin used by everything.
331	Night Out Mtn (top)	This is a horse trail from Ball's ranch.
377	Spectrum range lake (on top)	We had a hunting camp on this lake last fall.
388	Dokdoan	Dokdoan creek means "there is an echo". (Bobby Quock (45), tape 21a-B, Feb 21, 1983).
389	Devil Elbow Mtn (below)	On Devils Elbow mountain there are boulders set in circles about 10 feet in diameter. We found arrow heads inside.
391	Saddle Mtn	Above Anuk river, there is an also a stone fort with arrowheads.
392	Alpha Mtn	There is a square rock fort here on Alpha mountain.
393	Telegraph Creek trail	We had a trapping base camp on Devils creek.
394	Refuge lake (S)	We cross Burrage creek here on the trapping route.
395	Refuge lake (S)	The cabin here is known as the Nine Mile cabin and also as the White House.
396	Durham creek (S)	This is our trapping route to Devils creek after it leaves the line trail.
398	Porcupine river (mouth)	Trapping around the Porcupine river.
399	Scud river (mouth)	Trapping about 20 miles up the Scud. Our main cabin was at the mouth of the Scud.
407	Schaft creek	Shaft creek is called _____ (097)
469	Yehiniko creek (near)	This hunting and trapping trail leads to Glacier lake from the Stikine river.
470	Yehiniko creek (near)	There is a campsite on the trail, three miles from the Stikine river.
471	Yehiniko creek (near)	We camped four miles below Glacier lake.
478	Refuge lake (S)	There is a campsite at Durham creek.
479	Refuge lake (S)	Durham creek is called _____ (802).
480	Refuge lake (S)	There is a camp site at Devil creek.
481	Refuge lake (S)	There is a camp site near Mule lake.
482	Vourgeaux creek	Bourgeaux creek is called _____ (819)
484	Taweh	Just above the line trail, we camped at a trapper's camp.
486	Mess Creek	This lake on Mess creek is called _____ (104)
487	Mess creek (along)	This creek is called _____ (108) meaning ice water creek.
488	Mouez creek	Ambition mountain, Mt. Hickman, Saddlehorn mountain are all called by one name which is _____ (135).
489	Iskut river	The Iskut river is called _____ (169).
509	Refuge lake (S)	Devil creek is called that because it's so hard to cross with horses.
510	Refuge lake (S)	There used to be a line cabin near the camp site at Pup lake.
521	Refuge lake (around)	There is a campground at Refuge lake.



© Her Majesty the Queen in Right of Canada, Department of Natural Resources. All rights reserved.

3.1.7 Newsletter

Recognizing the busy schedules of many people living in the local communities, and the interest in the Galore Creek Project, NovaGold decided to prepare and distribute the *Galore Creek Newsletter*. The first newsletter, released in July 2005, introduced NovaGold and the Galore Creek Project to the communities. The second provided an update on the status of the 2005 program at Galore Creek and followed up with more details on the project. The newsletters were distributed in mailboxes in the communities of Iskut, Dease Lake, Telegraph Creek and Stewart. Copies can be found in Appendix 3-E, *Galore Creek Newsletters*.

3.1.8 Site Visits

In 2004, a Tahltan Elder participated in an overflight of the proposed access routes to provide information to the engineers designing the access.

In July 2004, the Chair of the Tahltan Central Council, Chief of the Tahltan Band and Chief of the Iskut First Nation accompanied a regulator tour to the Galore Creek site.

In August 2005, the Chair and a councillor from the Tahltan Central Council toured the Galore Creek site with the Land & Environmental Manager for NovaGold.

3.1.9 Tuh' da det' ah

In 2005, Vancouver Island Helicopters, which supplied the S-61 helicopter used to support project activities, approached NovaGold about the possibility of giving the helicopter a Tahltan name. The NovaGold Senior Project Coordinator suggested the name Soaring Eagle. In consultation with Tahltan Elders, the closest translation was Tuh' da Det'ah. One of the elders felt it was an honor for the Tahltan people to be able to give the helicopter a Tahltan name. In conjunction with naming the helicopter, an art contest was held to design the new logo. A total of 11 people entered the art contest, and prizes were awarded for the first, second and third place logo designs.

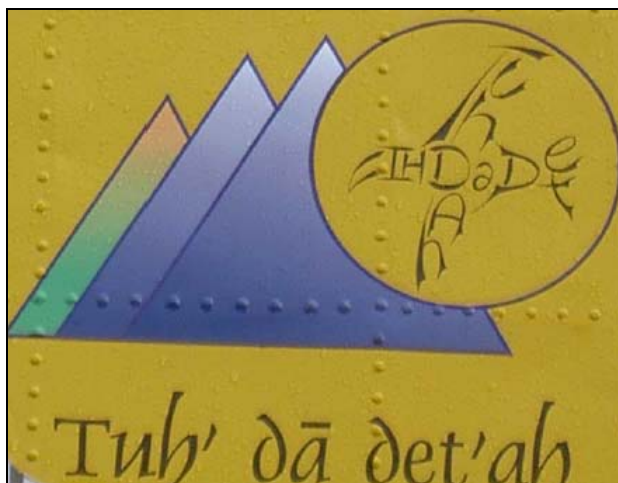


Plate 3.1-7 Winning logo for helicopter.



Plate 3.1-8 Tuh' da det' ah helicopter.

3.1.10 Proposal for a First Nations Consultation Program

The Canadian and B.C. environmental assessment processes provide for direct input from affected First Nations. The Tahltan Nation, through THREAT, will be involved in the initial screening of the EA Application, along with BCEAO and other key regulators, to ensure the Application fulfills the Terms of Reference (TOR).

The Participation Agreement between NovaGold and the Tahltan also addresses in detail the collaborative approach that will take place during the completion of the EA process. This includes NovaGold's commitment, if requested by the Tahltan, to make a presentation to THREAT of the key elements set out in the EA Application. Once the Application has been deemed to meet the requirements of the TOR, the document is distributed to the public and all regulators. From this point forward, meetings are held with the regulators and with working groups in which THREAT participates.

Additional open houses are planned for June 2006 in the communities of Iskut, Dease Lake and Telegraph Creek after the Application is accepted. The open houses will provide an overview and visual presentation of the project as described in the Application. Representatives from the BCEAO will chair the open houses and provide an overview of the assessment process. Representatives from NovaGold will be in attendance to describe the project and the contents of the Application and to identify any issues raised in the pre-application stage and how they have been addressed in the Application. In addition, the open houses and review of the Application will provide an opportunity for input to identify further issues or concerns.

3.2 Public Consultation

3.2.1 Summary and Evaluation of Public Consultation Activities

Since the submission of the Project Description to the BCEAO in February 2004, NovaGold has undertaken to keep the public informed about the company's plans and activities associated with the Galore Creek Project. The NovaGold website (www.novagold.net) provides regular updates on the company, as well as an overview of company management and the projects the company is advancing, including Galore Creek. Links to the BCEAO website (www.eao.gov.bc.ca) also appear on the website.

In the course of the pre-application phase of the Galore Creek Project, NovaGold has held 16 open houses in various communities in northwestern B.C. and southeastern Alaska. These open houses focused on the largely Tahltan nations communities of Iskut, Dease Lake and Telegraph Creek; however, many non-First Nation people attended the open houses in these communities. The other communities where open houses were held included Stewart, Smithers, Terrace and Wrangell. Overall, public reaction at the open houses has been predominantly in support of the project.

NovaGold has also actively participated in several public conferences, presenting updates and summaries on the Galore Creek Project, as well as presentations on the relationship that was being developed between the Tahltan and NovaGold.

3.2.2 Open Houses

As noted in Section 3.1.5, throughout 2004 and 2005 NovaGold held several open house meetings in Iskut, Dease Lake and Telegraph Creek. This section covers the open houses held outside of these communities.

June 2004

In June 2004, an open house was held in Stewart, in conjunction with open houses at Iskut, Dease Lake and Telegraph Creek (refer to Section 3.1.5). Twenty people signed in to the meeting, five of whom filled out the comment sheets. All agreed that they found the open house informative and that they would attend other open houses. respondents were interested in hearing more about employment opportunities.

Advertisements

Posters advertising the event were placed in central areas (post office, gas stations/food store, hotels) in every community prior to the meetings. Copies of the posters can be found in Appendix 3-A, *Galore Creek Gold-Silver-Copper Project Open Houses June 2004*.

Format

Representatives from NovaGold (VP Corporate Development, Land & Environmental Manager, Senior Project Coordinator) and the B.C. Environmental Assessment Office (BCEAO) attended each meeting. Community members were welcomed to the open house by a company representative. NovaGold had a series of large posters on display around the room (see Appendix 3-A), as did the BCEAO. In addition, NovaGold distributed handouts and annual reports (see Appendix 3-A) and the BCEAO provided brochures available describing the assessment process. Attendees to the meeting were asked to sign in, and comment sheets were available to be completed. Approximately half-way through the open house, the VP Corporate Development from NovaGold delivered a PowerPoint presentation summarizing the project. Questions were encouraged during the presentation.

October 2004

Locations

During the week of October 18, 2004, NovaGold hosted community meetings in seven different towns in northwestern B.C. and Alaska: Terrace, Iskut, Telegraph Creek, Dease Lake, Wrangell, Stewart and Smithers. The meetings in Iskut, Telegraph Creek and Dease Lake are discussed in Section 3.1.5.

Community	Venue	Date	Time
Terrace	Coast Inn of the West	Monday Oct 18	11 to 1:30 p.m.
Wrangell, Alaska	Nolan Center	Wed. Oct. 20	11 to 1:30 p.m.
Stewart	King Edward	Wed. Oct. 20	6 to 8 p.m.
Smithers	Hudson Bay Lodge	Thurs. Oct. 21	5 to 7 p.m.

Prior to the meetings, ads were placed in the *Terrace Standard*, the *Interior News* (Smithers), the *Wrangell Sentinel*, the *Petersburg Pilot* and the *Northwest Weekly* newspapers and interviews held with the *Interior News* and with CJXX FM in Terrace. A notice of the meetings was also faxed to the Chamber of Commerce distribution lists in the communities of Terrace, Smithers and Wrangell. Posters advertising the event were placed in central areas (post office, malls, hotels) in every community except Wrangell. Copies of the posters can be found in Appendix 3-F, *Galore Creek Gold-Silver-Copper Project Open Houses October 2004-2*.

Format

The format of each meeting was similar. Representatives from NovaGold (V.P. Corporate Development, Land & Environmental Manager, Senior Operations Manager, Senior Project Coordinator), Rescan Tahltan Environmental Consultants (RTEC) (Project Manager, Project Scientist) and the B.C. Environmental Assessment Office (BCEAO) (Project Assessment Director) attended each meeting. Community members were welcomed to the open house. NovaGold had a series of large posters on display (see Appendix 3-F), as did RTEC and the BCEAO. NovaGold also distributed handouts and annual reports (see Appendix 3-F). Brochures describing the BCEAO assessment process were also available. Attendees to the meeting were asked to sign in. Approximately half way through the open house, NovaGold's VP Corporate Development delivered a PowerPoint presentation summarizing the project. Given the stage of project development planning at the time of the meetings, there was significant emphasis on and discussion of the two access options being reviewed. Questions were encouraged during the presentation.

Summary

A total of over 250 people attended the open houses, of which 29 filled in comment sheets. A brief summary of each meeting follows, outlining the questions asked, comments from the comment sheets and individual conversations.

Community	No. in Attendance	No. of Comment Sheets
Terrace	>100	14
Wrangell	45	11
Stewart	23	0
Smithers	80	4

Terrace

Response to the open house was overwhelming, with over 100 attendees and standing room only in the venue. Attendees included prospectors, community leaders, suppliers, Haisla Nation members, educators, representatives from NGOs and people from Kitimat.

Questions were raised on the following aspects:

- Size and length of tunnel design
- Effects of trucking, *i.e.*, air pollution

- Relevance of the Forrest Kerr project to the Galore Creek Project
- Was the Bradfield Canal considered as an access option
- Is extension of the mine life or development of other mineral deposits more likely with the Bradfield Canal access
- Timeframe to build the road
- Was more tonnage established based upon 2004 field program
- What would a change in the provincial government do to the project

Comments and questions from the sheets and discussions with individuals covered the following topics:

- Exploration activities
- Skill requirements to work at the mine; would like to see training centre set up in Terrace
- Information session was educational; sounds great
- Condition of land post mining; jobs are important, yet the state of the land cannot left to be destroyed
- Job creation
- Hydrocarbon balance information depending upon route location; size of area opened up and mitigations
- Geology and ore extraction process; marketing of various metals produced
- Adjoining properties and the value they would potentially add
- Employment opportunities
- Concern about barge transport, as the Stikine is a very hazardous river; possible double costs with regard to longshore unions (U.S. and Canadian)
- Other projects NovaGold is involved in
- What training is required to get work; is there a course at the Terrace College
- Would NovaGold consider establishing a hiring office in Terrace
- Tahltan involvement in planning and support of the project
- Participation in management committee for the CIS-LRMP.

Wrangell

A total of 45 people attended the meeting over the lunch hour. Attendees included city councillors, suppliers, elected official representatives, regulators, NGOs from Juneau, and the economic development officer from Petersburg.

Questions were raised on the following aspects:

- Proximity of Galore Creek Project to the Stikine at its closest point

- Will road be built with private money
- What is the source of power
- Will there be a primary crusher at the mine site
- Will there be public access to the road; reclamation of road and long-term stability
- How will the open pit be mitigated
- Potential for acid rock drainage; status of ARD studies
- Influence of the Stikine being a B.C. heritage river on the choice for the access route.

Comments and questions from the sheets included:

- Sounds like a great project
- Southern route appears to be the most economical and would be best for Wrangell and the Bradfield Canal project
- Waste rock treatment alternatives
- Some environmental at risk
- More information on new B.C. hydro power
- How can Wrangell benefit from providing services; in favor of southern route
- More information on transportation access and route options
- More information about the effects of existing roads at projects such as this and how they affect wildlife migration corridors; also more information on erosion management on roads
- Strongly opposed to southern route; cost benefits outweighed by the need to lessen the impacts on the ecosystems along the main stem of the Stikine River.

Stewart

A total of 23 people attended the open house in Stewart. Attendees included city councillors, suppliers and health professionals.

Questions were raised on the following aspects:

- Length of tunnel (led to discussion on Granduc Mines tunnel near Stewart)
- Timeframe to truck to Stewart, number of trucks per day
- Consider barging concentrate down the Stikine
- Trucking costs on northern versus southern route
- Will tailings sites be a problem
- How do the U.S. impacts fit in to the project
- If Bradfield canal went ahead, how would it affect the project.

Smithers

Eighty people attended the open house. Attendees included councillors from Smithers and the Bulkley valley suppliers, elected official representatives, regulators and prospectors.

Questions were raised on the following aspects:

- Will southern route be open to other mining companies
- Have the Tahltan expressed a preference for one route over the other
- What is the impact of the Forrest Kerr project
- Impact on project if Bradfield Canal goes ahead
- Type of ML/ARD studies being conducted.

Comments and questions from the sheets included:

- Good project – Company demonstrates broad vision in considering options and seeking input from all concerned; great involvement of local people
- How will waste rock be handled
- Keep up the good work.

3.2.3 Presentations at Public Conferences

3.2.3.1 Mineral Exploration Roundup, Vancouver, January 2005

The 22nd annual Mineral Exploration Roundup was held from January 24–27, 2005, in Vancouver, B.C. Hosted by the B.C. & Yukon Chamber of Mines, Roundup is the second-largest mineral exploration conference in the world. The 2005 year's theme “Discovering Our Future” brought together an impressive international gathering of industry leaders, explorationists, prospectors, investment advisors, suppliers and students. NovaGold participated in this venue in several aspects:

- participation in core shack event with drill core from Galore Creek
- presentation on Galore Creek Project by Project Geologist
- joint presentation entitled “NovaGold's relationship with the Tahltan” between VP Corporate Development NovaGold and Chief of the Tahltan Band in session entitled *Evolving Relationships between First Nations and the Mineral Sector*, co-chaired by the Land & Environmental Manager from NovaGold.

Mineral Exploration Roundup had a record number of 5,200 delegates.

3.2.3.2 Minerals North, Stewart, April 2005

NovaGold participated in the Minerals North meeting held April 26–28, 2005 in Stewart. This conference brings the minerals industry together with a broad spectrum of people in northern B.C. communities: municipal and aboriginal representatives, business people, contractors, students and environmentalists. The objectives of the conference are to:

- establish contacts and build working relationships
- inform communities about mining and exploration projects and issues
- hold a dialogue on the impacts and benefits of mining.

The conference is sponsored by a different community in northern B.C. each year and attracts 200 to 300 people. Past conferences have been held throughout the north in Prince Rupert, Terrace, Houston, Fort St. James, Mackenzie, Prince George, Smithers, Stewart and Tumbler Ridge. The warm hospitality that derives from community involvement ensures that Minerals North is distinct from any other mining conference in British Columbia. Given to the proximity of the Galore Creek Project to the town of Stewart, and that concentrate from the Galore Creek mine will be shipped out of Stewart, NovaGold felt it was important to participate in this conference. The General Manager, Project Manager, Project Geologist, Project Engineer and Land & Environmental Manager attended the conference. The Land & Environmental Manager presented an overview of the Galore Creek Project to an audience of 300.

3.2.3.3 Southeast Alaska Conference, September 2005

The mission of Southeast Conference is to undertake and support activities that promote strong economies, healthy communities and a quality environment in southeast Alaska. Southeast Conference was formed in 1958 as an association of communities joined to advocate for establishment of the Alaska Marine Highway System. While its commitment to its development and efficient operation continues, Southeast Conference has greatly expanded both its membership base and its overall mission. Today, Southeast Conference is a regional, nonprofit corporation that advances the collective interests of the people, communities and businesses in southeast Alaska. Members include municipalities, Native corporations and village councils, regional and local businesses, civic organizations and individuals from throughout the region.

Southeast Conference is the State-designated Alaska Regional Development Organization (ARDOR), the federally-designated Economic Development District (EDD) and the federally-designated Resource Conservation and Development Council (RC&D) for southeast Alaska. Each of these designations requires Southeast Conference to take an active role in regional resource management and economic development planning.

The annual meeting of the Southeast Conference was held in Wrangell in September 2005. A special session on mining was co-hosted by the Project Geologist for NovaGold. NovaGold's Land & Environmental Manager provided an overview presentation of the Galore Creek Project to an audience of 300.

3.2.3.4 Mineral Exploration Roundup, Vancouver, January 2006

The 23rd annual Mineral Exploration Roundup was held January 23-27, 2006, in Vancouver, B.C. Over 5,400 delegates from 28 countries attended the Roundup. NovaGold participated in this venue in several aspects:

- participation in core shack event with drill core from Galore Creek
- presentation on Galore Creek Project by Project Geologist
- Land & Environmental Manager from NovaGold co-chaired a session entitled *Building Successful Relationships between Communities and the Mineral Sector*. Two of the Tahltan negotiators participated in the session, along with B.C. Minister of Aboriginal Relations and Reconciliations and a representative from the FN Summit
- Tahltan Nation were the first First Nation in the history of Roundup to have a booth at the conference.

3.2.4 Newsletters

As discussed in Section 3.1.7, newsletters were distributed in the community of Stewart.

3.2.5 Stakeholder Consultation

As outlined in Section 1.4.2.2 there are two guide outfitters and seven registered trap lines overlying the proposed mine site and access road (see Figures 1.4-3 and Table 1.4-2). Initial contact has been made with one guide outfitter and with one trapline holder. Completion of the baseline studies and the environmental assessment now provides a sound basis for NovaGold to engage the outfitters and trapline holders regarding the project and the possible impact of the project on their areas of interest.

At present, there are no active forestry or outdoor recreational interests in the area of the proposed mine site or access road.

As noted in Section 1.4.1 and shown in Figure 1.4-2, due to the high mineral potential of the region, there are several companies that have interests in mineral tenures in the vicinity of the proposed mine site and access road. During the initiation of baseline studies in 2004, many of these tenure holders were notified of the proposed baseline and exploration programs related to Galore. Since that initial contact, there has been interaction with many of the tenure holders at public conferences and presentations. As well, NovaGold has met with several tenure holders who have tenures along the access area and have provided information on studies of interest along the route. Some mineral tenure holders, while working on their tenures in the area, have had the opportunity to visit the project site.

3.2.6 Proposal for a Public Consultation Program

After submission of the Application for an Environmental Assessment Certificate and its acceptance for distribution, NovaGold will be holding additional open houses in the communities of Dease Lake, Iskut, Telegraph Creek, Smithers and Terrace in B.C., and in Wrangell and Petersburg in Alaska. The open houses will provide an overview and visual presentation of the project as described in the Application. Representatives from the BCEAO will chair the open houses and provide an overview of the assessment process. Representatives from NovaGold will be in attendance to describe the project and the contents of the Application and to identify any issues raised in the pre-application stage and how they have been addressed in the Application.

In addition, the open houses and review of the Application will provide an opportunity for input to identify further issues or concerns.

3.3 Government Participation and Consultation

3.3.1 Summary and Evaluation of Government Consultation Activities

NovaGold initiated meetings with government regulators shortly after the project officially entered the pre-application phase of the B.C. environmental assessment process in February 2004. The first overview meeting with Canadian (B.C. and federal) regulators took place in April 2004 in Smithers. Recognizing that the project involves the Stikine River, which falls into a transboundary watershed, a similar meeting was held to engage U.S. regulators in Juneau in May 2004. A joint meeting with close to 30 regulators held in June 2004 helped define and clarify the similarities and differences between the B.C., Canadian, Alaskan and U.S. regulatory system. Tahltan leadership and members of the THREAT team participated in all of these meetings as well.

The initial meetings in 2004 introduced NovaGold and the project to the regulators and the Tahltan and provided an overview of the proposed baseline work to be undertaken on the project. NovaGold received input on the proposed program from the general meetings and from the technical working groups that were formed to address specific issues (see Section 3.3.2.2). Two large site tours was conducted with the regulators in the summer of 2004 to help familiarize them with the project. As mentioned earlier, members of the THREAT team participated in these working groups.

In March 2005, similar overall meetings were held in Smithers to provide an update of the project and present the baseline program for 2005 for comments and input. The technical working groups continued to meet throughout 2004 and 2005 and held more than 20 meetings.

Additional tours to site were conducted for smaller groups of regulators, as well as political representatives of the area and the B.C. Minister of State for Mining.

The early engagement and participation of the various government regulators and the Tahltan has enabled NovaGold to incorporate valuable input into the design and planning for the Galore Creek Project.

3.3.2 Meetings

3.3.2.1 Overall

Following the submission of the Project Description to the B.C. Environmental Assessment Office in February 2004, NovaGold held an initial meeting with the B.C. and Canadian regulators in Smithers in April. Several members of the Tahltan leadership and Elders participated in the meeting as well. The meetings spanned two days and were chaired by the B.C. Environmental Assessment Office (BCEAO). This initial meeting began by both BCEAO and representatives from Canadian Environmental Assessment Agency (CEAA) providing an overview on their processes. As well, there was a presentation on the Canada/B.C. agreement on

environmental cooperation. Presentations from the company included an overview on NovaGold and the Galore Creek Project and presentations on exploration, preliminary engineering work and the proposed baseline program. The meeting ended with each regulatory representative providing overview comments or remarks. More from 20 regulators participated in the meeting.

Given to the close proximity to the U.S. border and recognition that Galore Creek feeds into the Stikine, which is part of a transboundary watershed, NovaGold representatives travelled to Juneau in May 2004 to engage Alaskan and U.S. regulators. Participants in this meeting included representatives from the Alaska Departments of Natural Resources, Environmental Conservation, Agriculture, U.S. Departments of Interior and Agriculture, Environmental Protection, National Marine Fisheries Service and the City of Wrangell. Representatives from the Tahltan (councillor and member), the BCEAO and the CEAA also participated in the meeting. The presentations were similar to those at the Smithers meeting in April. The meeting ended with discussion of the participation in the Galore Creek review by the U.S. regulators.

It became apparent during these meeting that several specific issues required particular attention. This led to the formation of seven different technical working groups (see Section 3.3.2.2).

Two site tours to site were conducted with the regulators in June and September of 2004 (see Section 3.3.2.3).

The next overall meeting was held in March 2005 in Smithers. The two-day meeting covered an overview of the 2005 plans at Galore Creek, the results from the 2004 programs and plans for the 2005 baseline work. Topics covered included terrain stability assessment, water management, ecosystem mapping, wetlands assessment, terrestrial wildlife, archaeology, aquatics, metal leaching/acid rock drainage and mine operations and closure. More than 30 B.C., Canadian, Alaskan and U.S. regulators and Tahltan members participated in the meetings. As per other general meetings, all participants provided overview comments and remarks.

Since submission of the project Description in February 2004, more than 40 meetings have been held with regulatory agencies. Table 3.3-1 provides a summary of the meetings (overview and working group), calls and site tours.

3.3.2.2 Technical Working Groups

As discussed in the Regulatory Framework Chapter in Section 2.1.3, smaller technical working committees were formed for the Galore Creek Project. Representatives of the groups included both Canadian and U.S. provincial/state and federal regulators, Tahltan members/representatives, BCEAO, CEAA and NovaGold. The seven technical work group were as follows:

- Access Road Technical Group
- ML/ARD Technical Group
- Water Quality/Hydrology/Water Management Technical Group
- Wildlife/Terrain Technical Group
- Fisheries and Navigable Water Technical Group

- Socio-Economic Technical Group
- Mine Planning, Development and Closure Technical Group.

These technical working groups met several times (refer to Table 3.3-1), generally to review or provide input into baseline programs and testwork. Various technical procedures (*e.g.*, salt dilution) were also discussed at some of these meetings. The Access Road Technical Group had the largest membership, as the access corridor affects many different regulatory areas.

The Tahltan Heritage Resource Environmental Assessment Team participated in most of these meetings. THREAT has designated Tahltan representatives who provide valuable input to these working groups. In addition, NovaGold provided funding to THREAT and its technical advisors to participate in these meetings.

The technical working groups provided a venue for regulators, Tahltan and NovaGold to design the Galore Creek Project in an environmentally and socially responsible manner.

3.3.2.3 Site Tours NovaGold hosted

In 2004, NovaGold hosted two separate tours to site with Canadian and U.S. government regulators, and Tahltan leadership. Approximately 20 regulators participated in each tour, which was followed by meetings in Dease Lake. Each tour focused on helicopter flights to and from site over the proposed access routes, with presentations and tours at the Galore Creek property itself.

In 2004, several regulators from B.C. Ministry of Environment spent a few days at site, becoming familiar with the property and the issues. The B.C. Minister of State for Mining, accompanied by staff for the ministry, was given an overview of the property in 2004.

In May 2005, a tour focusing on the access corridor with representatives from Department of Fisheries and Oceans and B.C. Ministry of Environment enabled the regulators to gain a better perspective of the issues. In August 2005, the new B.C. Minister of State for Mining and the local federal member of parliament for the area were given an overview of the property. In September 2005, regulators from the federal and provincial Ministries of Environment also toured the site.

3.4 Transboundary Consultation

As noted above, Alaskan and U.S. regulators have been extensively involved in the pre-application phase of the Galore Creek Project, having input to the baseline studies and the terms of reference for the project

**Table 3.3-1
Summary of Meetings with Government Representatives/Regulators**

Date	Event	Location
February 1, 2004	Submission of Project Description to BCEAO	
April 5-6, 2004	Overview of Galore Creek Project with Canadian regulators	Smithers
April 21, 2004	Wildlife/Ecosystem Mapping working group meeting	Smithers
April 22, 2004	Fish & Navigable Waters working group meeting	Smithers
May 13, 2004	Overview of Galore Creek Project with Alaskan/American regulators	Juneau
May 5, 2004	ML/ARD working group meeting	Vancouver
June 29, 2004	Joint Meeting between American and Canadian regulators	Vancouver
July 23, 2004	Update and field trip to site with regulators	Galore Creek/Dease Lake
August 1, 2004	Tour to site with Minister of State for Mining	Galore Creek
September 23, 2004	Update and field trip to site with regulators	Galore Creek/Dease Lake
October 1, 2004	Access Road working group meeting	Vancouver
November 4, 2004	Fish & Navigable Waters working group meeting	Vancouver
December 3, 2004	ML/ARD working group meeting	Vancouver
January 27, 2005	Wildlife/Ecosystem Mapping working group meeting	Vancouver
January 26, 2005	Fish & Navigable Waters working group meeting	Vancouver
January 26, 2005	Water Quality & Management Working group meeting	Vancouver
January 28, 2005	Access Road working group meeting	Vancouver
February 22, 2005	Access Road working group meeting	Smithers
March 15-16, 2005	Overview of 2005 Program meeting	Smithers
March 21, 2005	Meeting with DFO	Vancouver
April 8, 2005	ML/ARD working group meeting	Smithers
April 15, 2005	Wildlife/Ecosystem Mapping working group meeting	Smithers
April 15, 2005	Fish & Navigable Waters working group meeting	Smithers
May 1, 2005	Tour to site with DFO	Galore Creek
May 20, 2005	Call re salt dilution	
June 2, 2005	Meeting with DFO	Vancouver
June 2, 2005	Call with US regulators	
June 6, 2005	Call with CEAA and BCEAO	
August 3 2005	Tour to site with Minister of State for Mining	Galore Creek
August 4 2005	Tour to site with Nathan Cullen, MP for NWBC	Galore Creek
August 11, 2005	Call with Health Canada	
September 1, 2005	Meeting with federal agencies re scope	Vancouver
Sept. 20, 2005	Socioeconomic working group meeting	Dease Lake
Sept. 29, 2005	Tour to site with federal and BC MoE	Galore Creek
Oct. 27, 2005	Call with BCEAO	
November 29, 2005	Meeting with BCEAO	Vancouver
December 15, 2005	Access Road working group meeting	Vancouver
December 16, 2005	ML/ARD working group meeting	Vancouver
December 16, 2005	Mine Planning, Operations and Closure working group meeting	Vancouver
January 19, 2006	ML/Water Quality working group meeting	Vancouver
February 16, 2006	Water Management working group meeting	Vancouver
February 23, 2006	Meeting re MMER	Vancouver
March 2, 2006	Meeting with MOE	Smithers
March 8, 2006	Meeting with MOE	Vancouver