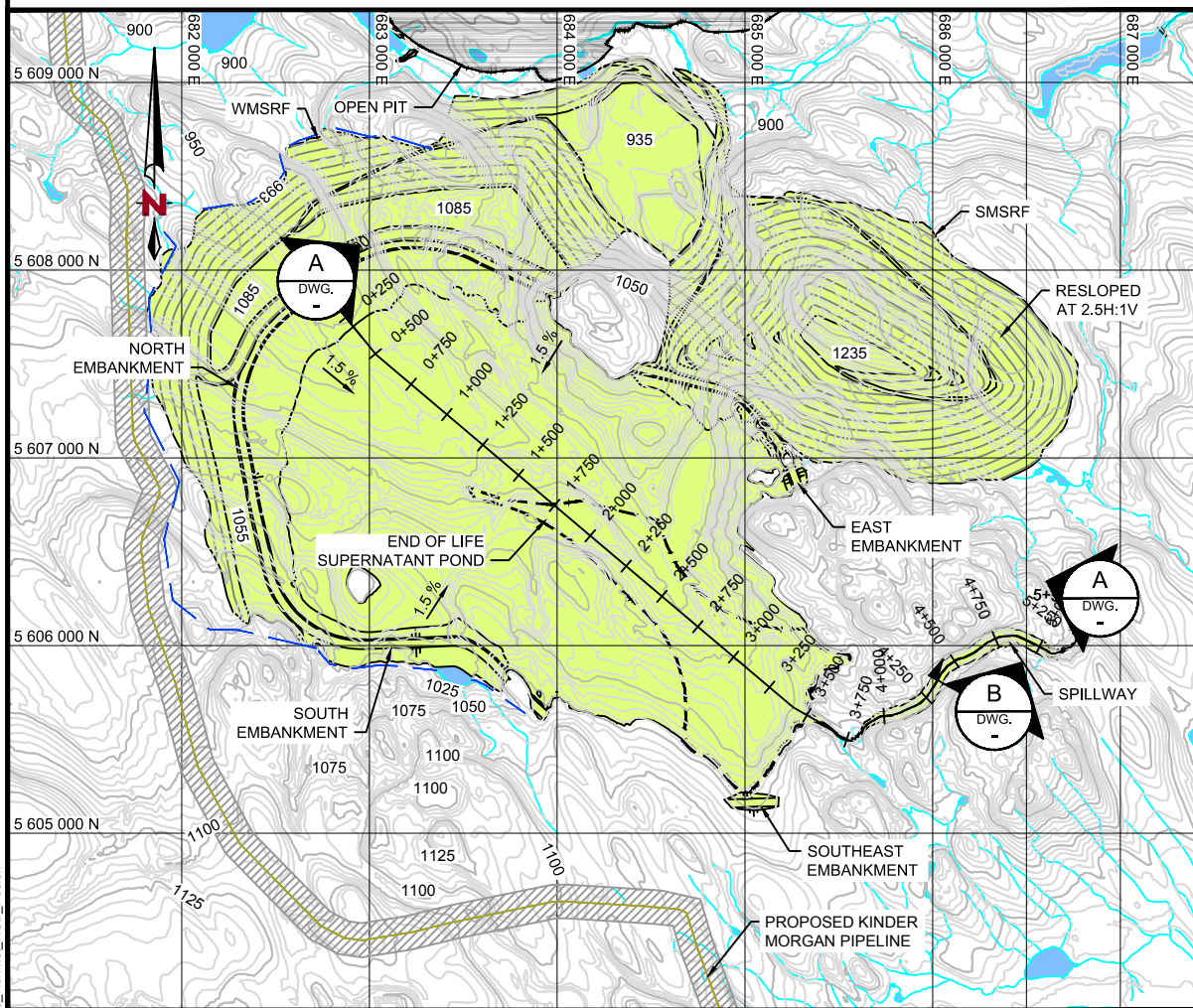
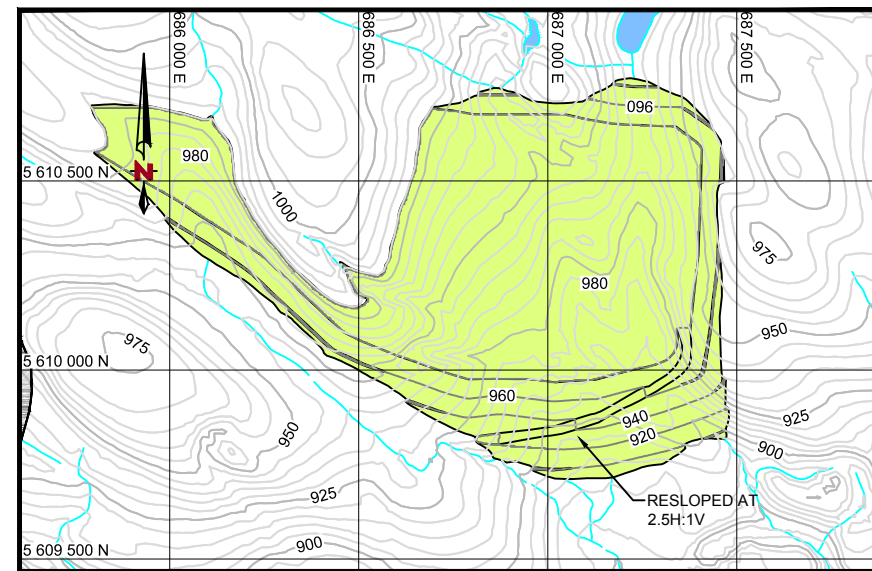


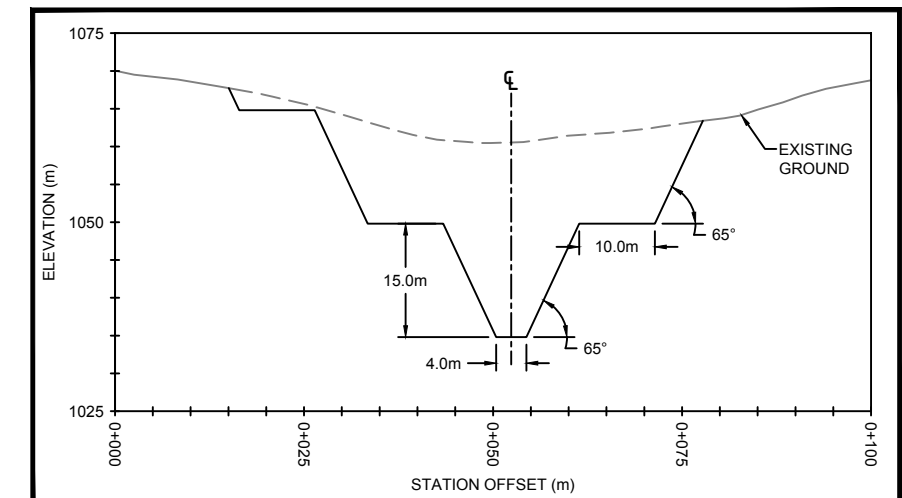
SECTION A
DWG. -



TSF, WMSRF, SMRSF AND SPILLWAY PLAN
SCALE A



EMRSF PLAN
SCALE B



SECTION B
SCALE D
DWG. -

REFERENCES:

1. ALL DESIGN COORDINATES ARE PROVIDED IN METRES.
2. THE COORDINATE SYSTEM IS IN UTM NAD 83 ZONE 10.
3. TOPOGRAPHY DATA IS BASED ON LIDAR PROVIDED BY KGHM (APRIL 2013).
4. OPEN PIT LAYOUT PROVIDED BY KGHM (NOVEMBER 2015 MINE PLAN).

NOTES:

1. OVERBURDEN CUT NEEDS TO BE AT 3:1 WITH A BENCH WIDTH OF 4m AT THE BEDROCK CONTACT.
2. DEPTH OF OVERBURDEN TO BE DETERMINED DURING DETAILED SITE INVESTIGATIONS.

LEGEND

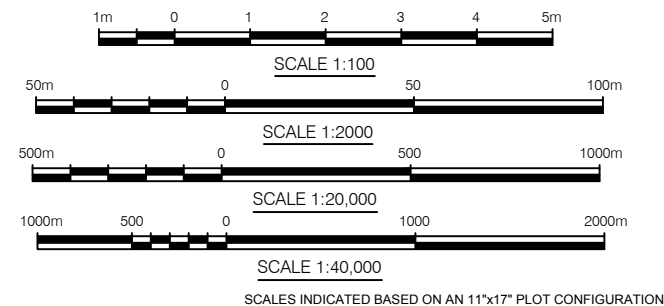
- TOPSOIL / REVEGETATION
- TILL
- MINE ROCK
- TAILINGS
- SUPERNATANT POND
- COLLECTOR DITCH

SCALE D

SCALE C

SCALE B

SCALE A



REV.	DATE	DESCRIPTION	DWN	DSG	CHK	APR
3	2016-01-15	PERMIT LEVEL REPORT	SC	DT	SE	SE
2	2015-12-01	ISSUED FOR REVIEW	SC	MW	CK	SE
1	2015-11-27	DRAFT - PERMIT LEVEL REPORT	SC	CK	CK	SE
0	2015-08-21	ISSUED AS FINAL	SC	MD	CK	SE
A	2015-07-31	ISSUED FOR REVIEW	SC	MD	CK	SE

ENGINEER'S SEAL

AS A MUTUAL PROTECTION TO OUR CLIENT, THE PUBLIC, AND OURSELVES, ALL REPORTS AND DRAWINGS ARE SUBMITTED FOR THE CONFIDENTIAL INFORMATION OF OUR CLIENT FOR A SPECIFIC PROJECT. AUTHORIZATION FOR ANY USE AND/OR PUBLICATION OF THIS REPORT OR ANY DATA, STATEMENTS, CONCLUSIONS OR ABSTRACTS FROM OR REGARDING OUR REPORTS AND DRAWINGS, THROUGH ANY FORM OF PRINT OR ELECTRONIC MEDIA, INCLUDING WITHOUT LIMITATION, POSTING OR REPRODUCTION OF SAME ON ANY WEBSITE, IS RESERVED PENDING NORTHWEST'S WRITTEN APPROVAL. IF THIS REPORT IS ISSUED IN AN ELECTRONIC FORMAT, AN ORIGINAL PAPER COPY IS ON FILE AT NORTHWEST CORPORATION AND THAT COPY IS THE PRIMARY REFERENCE WITH PRECEDENCE OVER ANY ELECTRONIC COPY OF THE DOCUMENT, OR ANY EXTRACTS FROM OUR DOCUMENTS PUBLISHED BY OTHERS.

SCALE: AS SHOWN
DATE: 2016-01-15
CO-ORD. SYS.: UTM-NAD83 ZONE 10
DRWN BY: SC REVD BY: CK
DSGN BY: CK APP'D BY: SE

KGHM **KGHM AJAX MINING INC.**

AJAX PROJECT
TAILINGS AND WATER MANAGEMENT FACILITIES
GENERAL ARRANGEMENT
CLOSURE PLAN AND SECTIONS

NORWEST DRAWING NO.: C180-KA39-5000-00-014 REV.: 3