

KTUNAXA NATION TRADITIONAL USE IN THE UPPER COLUMBIA RIVER WATERSHED

**A Review of the 1996 ʔakisq̓nuk Traditional Use Study Documenting
Ktunaxa Activities in the Columbia River Watershed and
Within the Columbia Valley Transmission Corridor**

Report prepared for
BC Hydro Mica 5/6 Project
Environmental Overview Assessment
and
Columbia Valley Transmission Corridor
Environmental Overview Assessment

Report prepared by
Craig Paskin
Manager, Research and Planning
Ktunaxa Lands and Resources Agency

17 November 2009



KTUNAXA LANDS AND RESOURCES AGENCY

TABLE OF CONTENTS

1. Introduction	1
2. Ktunaxa Traditional Territory	1
3. Study Area	3
4. Method	3
4.1 Method for Mica 5/6 Project	3
4.2 Method for Columbia Valley Transmission Corridor	4
4.3 ATUS Methodology	4
5. Results	5
5.1 Results from Mica 5/6 Study Area	5
5.2 Results from CVTC Project Study Area	6
6. Discussion	6
7. Conclusions and Recommendations	7
Appendix 1: Fishing Places Identified Within the Mica 5/6 Study Area	8
Appendix 2: Time Period for Fishing	9
Appendix 3: Interview Results (Places and Activities) Associated with CVTC	10

KTUNAXA NATION TRADITIONAL USE IN THE UPPER COLUMBIA RIVER WATERSHED

A Review of the 1996 ʔakisq̓nuk Traditional Use Study Documenting Ktunaxa Activities in the Columbia River Watershed and Within the Columbia Valley Transmission Corridor¹

1. INTRODUCTION

The purpose of this report is to provide relevant traditional use information in relation to BC Hydro's Mica 5/6 dam project and BC Transmission Corporation's Columbia Valley Transmission Corridor (CVTC) project.

BC Hydro proposes to expand the hydroelectric capacity of its Mica dam and BC Transmission Corporation proposes to construct a power line by the Columbia River from Golden to Invermere. This report will contribute to the environmental assessment review consultation process between the Ktunaxa Nation Council and the proponents.

This report provides information on Ktunaxa uses and interests as identified from the 1996 *Ktunaxa-Kinbasket Traditional Use Study*. As such, this report does not claim to provide a comprehensive summary of all Ktunaxa traditional and current interests and uses in the project area. Also, it does not consider historical documentation or ethnographic studies other than those identified in the 1996 Traditional Use Study.

2. KTUNAXA TRADITIONAL TERRITORY

Ktunaxa (pronounced 'k-too-nah-ha') people have occupied the lands adjacent to the Kootenay and Columbia Rivers and the Arrow Lakes of British Columbia, Canada for more than 10,000 years.

The Traditional Territory of the Ktunaxa Nation covers approximately 70,000 square kilometres (27,000 square miles) within the Kootenay region of south-eastern British Columbia and historically included parts of Alberta, Montana, Washington and Idaho (see Figure 1).

European settlement in the late 1800s, followed by the establishment of Indian Reserves, led to the creation of the present Indian Bands.

Ktunaxa citizenship is comprised of Nation members that live among seven reserves located throughout the historic traditional Ktunaxa territory. Five Bands are located in British Columbia, Canada and two are in the United States (see Table 1). Many Ktunaxa citizens also live in urban and rural areas "off reserve".

¹ In recognition that consultation is an ongoing process, the information in this report shall not be used by the Province to fulfil any consultation obligations without the Province first consulting with the Ktunaxa Nation to provide them the opportunity to update and contextualize the information.

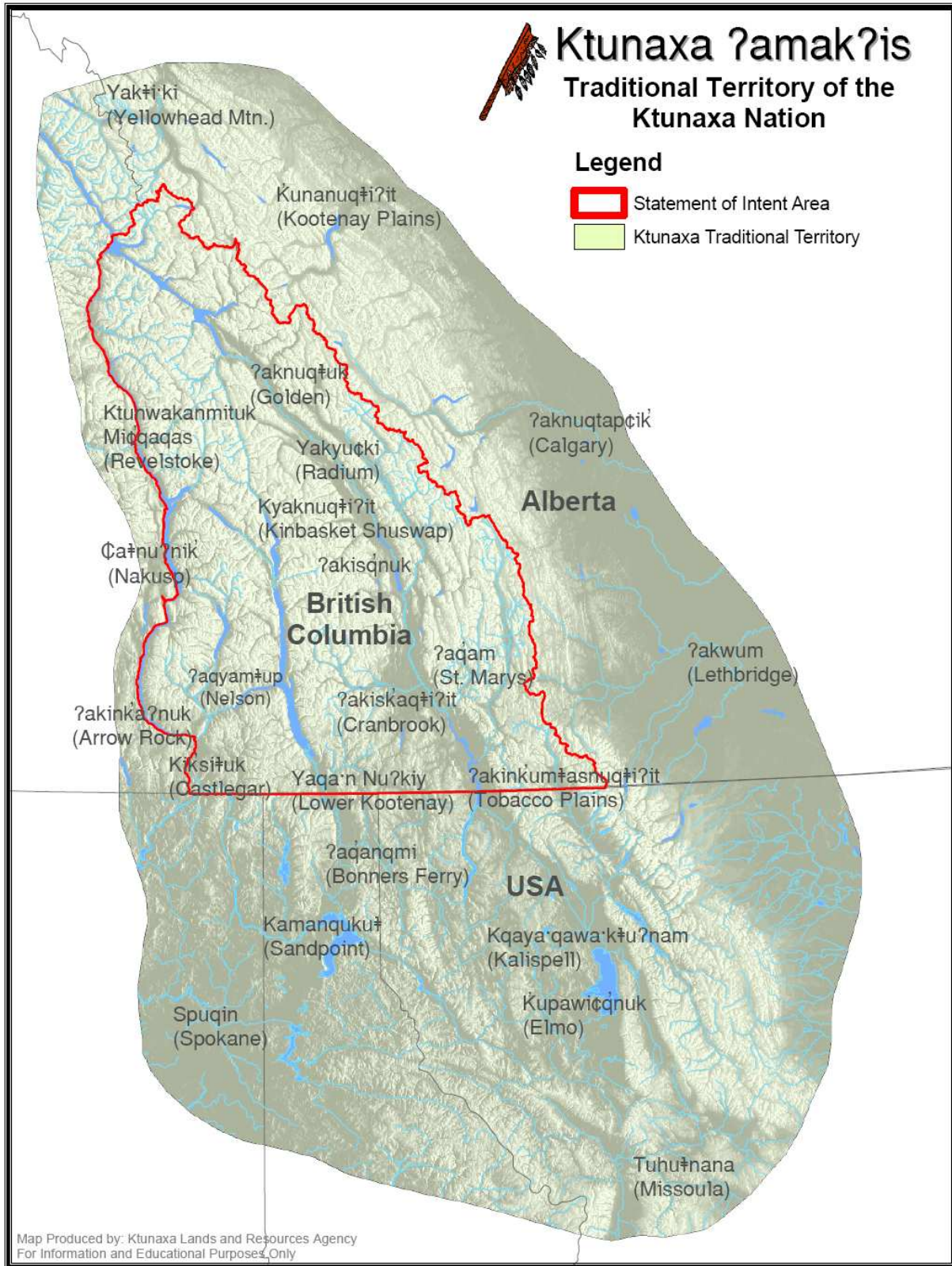


Figure 1: Ktunaxa Traditional Territory

Table 1: Ktunaxa Bands and Locations

Ktunaxa Name	Also Known As	Location
ʔakisq̓nuk	Columbia Lake Band	Windermere, BC
ʔaɗam	St. Mary's Band	Cranbrook, BC
ʔakinink̓umʔasnuq̓iʔit	Tobacco Plains Band	Grasmere, BC
Yaqan nuʔkiy	Lower Kootenay Band	Creston, BC
Kyaknuq̓iʔit	Shuswap Band	Invermere, BC
ʔaɗanq̓mi	Kootenai Tribe of Idaho	Bonnars Ferry, Idaho
Ƙupawiɕq̓nuk	Ksanka Band	Elmo, Montana

3. STUDY AREA

Given that the most immediate impact from a dam is upon fish, the study area associated with the Mica 5/6 project includes the Columbia River watershed (i.e., all tributaries and lakes flowing into the Columbia River) upriver from the Mica 5/6 site to the headwaters of the Columbia River. This area fits entirely within the Ktunaxa Traditional Territory.

This study area incorporates the entire watershed and does not factor in whether any fish barriers exist that can impede fish movement along the tributaries into the Columbia River. Including this component is beyond the scope of this study.

The CVTC study area is as provided by BC Transmission Corporation (BCTC). That is, along the west side of the Columbia River from Golden to Invermere.

4. METHOD

This report reviewed the 1996 Ktunaxa-Kinbasket Traditional Use Study as currently archived at the ʔakisq̓nuk Band Office².

4.1 Method for Mica 5/6 Project

The ATUS was reviewed for activities and places related to fishing within the Columbia River watershed³. Places identified by interviewees in the ATUS as used for fishing were listed. All those places that were identified for fishing by interviewees, whether for their own use, accompanied by other individuals, with families, if they went with parents or with grandparents, and if other Ktunaxa, Shuswap or other natives used the place

² In this report, the 1996 Ktunaxa-Kinbasket Traditional Use Study, because it was primarily conducted by and subsequently held at the Band Office, is referred to as the ʔakisq̓nuk Traditional Use Study (ATUS).

³ Only fishing places were identified as fish were considered to be the resource affected by dams. No other resource or activity (hunting, trapping, cultural activities) was considered, as these would have already been impacted with the initial flooding of the reservoirs.

were counted. As it was not possible to ascertain that actual number of people involved without reviewing the original data, the categories of families, parents, grandparents, other Ktunaxa, other Shuswap, and other natives were counted in units of one. That is, if an interviewee mentioned that they went to a place to fish with their grandparents, the grandparents were counted as only one unit as it was not possible to ascertain whether both or only one pair of grandparents went (i.e., there could have been from one to four grandparents attending). The interviewee was also counted as one unit; hence, a count of two (one for the interviewee and one for the grandparents) was given for the place.

The identified fishing places were referenced to topographic maps to ensure they were within the study area and were on lakes and tributaries of the Columbia River upstream of the Mica dam.

4.2 Method for Columbia Valley Transmission Corridor

The ATUS was also reviewed for any activities within the CVTC that may be impacted by the project. Places identified on a topographic map located within the CVTC were correlated with activities and places identified in the ATUS.

The intent of this component of the project was to concentrate on important locations rather than the number of people who used sites within the study area. That is, it was deemed more important to identify key places rather than intensity of use.

4.3 ATUS Methodology

The methodology of the ATUS itself was to interview Ktunaxa and Kinbasket citizens⁴. These citizens provided information and mapping of people, places and activities throughout the Traditional Territory. The information collected included who conducted what activities where and sometimes when. The time periods of activities ranged from the 1990s back to the 1880s and earlier.

Caution should be exercised when interpreting the results of the ATUS and its corresponding maps. With only 102 interviewed, the ATUS represents only 8.5 percent of the approximate 1200 Ktunaxa-Kinbasket citizens. That is, a higher interview ratio would more than likely show greater activity across a more extensive area than is currently shown.

The information produced during the ATUS interviews was subsequently entered into a database and the maps were digitized. The database linked the information to the maps. Due to the technology of the time, the information was mapped as inclusive polygons; that is, it was not possible to analyze the data or conduct any intensity-of-use mapping. In other words, the maps produced show extent-of-use rather than intensity-of-use⁵.

The ATUS project also identified historical and written bibliographic resources related to the Traditional Territory. These resources were also entered into the database and digitally mapped when there was a reference to an activity, place or location.

⁴ A total of 102 Ktunaxa-Kinbasket citizens were interviewed in which approximately 350 places (270 directly plus 80 places identified through written sources) were identified.

⁵ Intensity-of-use can be ascertained if the original data is re-digitized and analyzed with contemporary GIS technology.

5. RESULTS

5.1 Results from Mica 5/6 Study Area

Of the 102 ATUS interviewees, 45 (44.1%) identified fishing places within the Columbia River watershed associated with the study area. Of the total places identified by interviewees in the ATUS throughout the Traditional Territory (270), 39 locations (14.4%) corresponding to fishing were located within the study area. These locations represent 11.1% of all the places (approximately 350 identified through interviewees and written sources) within the Traditional Territory. There were also three fishing locations identified from written sources that were used by the Upper Kutenai/Ktunaxa.

In total, there were 208 “units” (interviewees, accompanying individuals, families, parents, grandparents, and other Ktunaxa, Shuswap and natives) that used the places for fishing. See Appendix 1 for the places identified and the intensity of use for fishing within the Mica 5/6 study area.

Four sites were specifically identified by interviewees as places for salmon fishing. These sites include Columbia Lake⁶, Dunbar Creek⁷, Windermere Lake⁸, and Kicking Horse River⁹.

Fishing at the various locations was an activity that has occurred in historical periods as well as contemporary times ranging from prior to the 1880s into the 1990s (and presumably currently as well). See Appendix 2 for the time periods in which fishing has occurred in the various locations within the study area¹⁰.

The places identified through historical sources, as identified in ATUS, as fishing locations (some associated with salmon) include Warspite Creek, the East Side of Columbia Lake, and Near Armstrong Bay (Battle Site).

For Warspite Creek (ID 320), it was noted that “among the Upper Kutenai, except for the spearing of salmon at Columbia Lakes, fishing was done primarily to secure change in diet that otherwise consisted predominantly of animal flesh, or during seasons of scarcity, to eke out a scanty food supply.”¹¹ It was also found that the Ktunaxa would catch salmon along the Columbia River between Columbia Lake and Golden on the mouth of every creek that goes into the Columbia River¹². More specifically, historical documents associated with the place found that there were native families near the north end of Columbia Lake where they caught salmon in lakes nearby and camped and dried them near the area¹³.

⁶ Interviewee stated that “Ktunaxa and Kinbasket tribes travelled to the Columbia Lake to fish for Salmon.”

⁷ Interviewees stated “They would fish for and dry salmon here.”

⁸ Interviewee’s “grandmother ice fished on the lake for ling, trout, salmon.”

⁹ Interviewee “would hunt deer and elk, he also fished salmon in this area.”

¹⁰ Caution should be exercised in interpreting the time periods associated with each location as not every interviewee was questioned on time of activities.

¹¹ Schaeffer, Claude E. *Papers*. Fishing. Glenbow Archives.

¹² Kootenay Ethnography: Questions and Answers.

¹³ Graham, Clara. 1945. *Fur and Gold in the Kootenays*. Wrigley Printing Co. Ltd., Vancouver, British Columbia. A history of the Kootenay Region with much attention to the Kootenai Indians of Canada. Also the story of the invasion of the land of the Kootenais by white gold miners.

For the East Side of Columbia Lake (General) (ID 321), one source noted that “on an alluvial fan adjacent to a bend in the Columbia River, a site was recorded that had artifacts for fishing such as sinkers, and stemmed projectile points.”¹⁴

For the site Near Armstrong Bay (ID 323), a written source noted that the Ktunaxa “would fish the surrounding river systems [where there] are still pot holes where they would dry the fish.”¹⁵

5.2 Results from CVTC Project Study Area

Within the CVTC study area, 28 places associated with activities were identified. The activities associated with these places include ceremonial, recreation, material gathering, medicinal gathering, habitat, and food gathering. Food gathering is the major activity identified (see Appendix 3).

6. DISCUSSION

In other studies regarding water use in the Columbia River watershed, it has been stated that the “oldest of today’s elders are too young to have fished for [salmon] in the Upper Columbia, as the run ends in the early 1930’s with the construction of the Grand Coulee Dam” or that “as is typical with TUS interviews that are focused on areas distant from the modern reserve communities, the amount of knowledge on the given areas declines as distance increases.”¹⁶ This is probably because such studies tend to be limited in the number of people that can be or were interviewed. In the *Ktunaxa Kinbasket Treaty Council Columbia River Water Use Planning Traditional Use Study* prepared for BC Hydro in 2002, only 16 people were interviewed¹⁷, thus given the mistaken impression that few people knew of salmon fishing or fishing in general in the Columbia River watershed.

However, the ATUS shows that 45 interviewees (44.1% of all ATUS interviewees) identified fishing places within the Columbia River watershed, of which 208 “units” participated in fishing; that is, they either fished these locations themselves, or knew of others who fished there. Of these locations, four were specifically identified as places for salmon fishing.

These numbers indicate a greater degree of importance of fishing within the Columbia River watershed than indicated in previous studies. More importantly, the ATUS shows that there are those who used numerous locations for fishing purposes and did so from at least the 1880s to contemporary times.

The ATUS, because of the map scale and use of polygons, did not contribute to identifying specific locations that may be jeopardized by any hydroelectric power pylons

¹⁴ Choquette, Wayne (?). Columbia Lake Preliminary Archaeological Assessment and Interpretive Report. The report includes literature review that looks at reports that have already been written by many archaeologist that have done work in the area between Fairmont and Canal Flats.

¹⁵ Yip, Arlene. *Archaeological Investigations At the Columbia Lake Site EbPw-1*.

¹⁶ Keefer, Michael. 2002. *Ktunaxa Kinbasket Treaty Council Columbia River Water Use Planning Traditional Use Study*. Prepared for BC Hydro. Ktunaxa Kinbasket Treaty Council.

¹⁷ Those 16 interviewees were from Lower Kootenay (5), St. Mary’s (1), Columbia Lake (3), and Shuswap (7).

associated with the CVTC. That there were no indications of specific Ktunaxa values can be the result of either the map scale used or that interviewees may have been reluctant to reveal specific sites such as spiritual, ceremonial or sacred locations.

7. CONCLUSIONS AND RECOMMENDATIONS

The 1996 ATUS shows that the Columbia River and its tributaries are important to the Ktunaxa for fishing and has been so since at least prior to the 1880s. If more citizens had been interviewed, the ATUS would have shown even greater importance for fishing within the Columbia River watershed.

The ATUS, however, was unable to show specific values that may be impacted by the hydroelectric corridor along the Columbia River. This is not to say there are no values that could be impacted; rather, the challenge is identifying those values. As is often the case with sensitive cultural or sacred sites, people may be unwilling to provide what is essentially very private information. Hand-in-hand with that challenge is identifying the appropriate people who might have knowledge of the area and who are willing to identify specific values. Also, the ATUS, because of its mapping limitations at the time, cannot show specific locations.

Consequently, it is recommended that the ATUS map polygons be disaggregated into its component parts. This would allow a better picture of where specific activities took place within the CVTC. It is also recommended that individuals be identified who may have an interest or knowledge of the CVTC and who may be willing to participate in subsequent interviews. Once these individuals are identified, in-depth interviews can focus specifically on the CVTC.

The CVTC is used for food, medicinal and material collection. Although it can be argued that the hydroelectric power line would occupy a small footprint, it is recommended that BC Transmission Corporation manage the corridor to reflect the potential scarcity of important food, medicinal and material plants.

It is also recommended in regards to the CVTC that Preliminary Field Reconnaissance, Archaeological Overview Assessments and Archaeological Impact Assessments be conducted to ascertain the archaeological resources that may be impacted by the pylon locations.

APPENDIX 1: FISHING PLACES IDENTIFIED WITHIN THE MICA 5/6 STUDY AREA

ID	Place	Interviewee Used Place	Accompanying Individuals	Families	Parents	Grand-parents	Other Ktunaxa	All Natives	Shuswap	Total
42	Columbia River	12	7	6	2					27
44	Columbia Lake	9		2		1	1	1	1	15
34	Dutch Creek	6		3		1		3		13
106	Cartwright Lake	9		3		1				13
111	Brewer Creek	4		3			3		1	11
25	Dunbar Creek	5		4					1	10
74	Windermere Lake	7		1				2		10
29	Shuswap Creek	6	1			1				8
73	Susan Lake	3		3						6
104	Brisco	3			1	1			1	6
115	Windermere Creek	3	1					2		6
133	Horse Creek	3	2	1						6
165	Lake Enid	3		2			1			6
179	Jade Lake	3		3						6
26	Templeton River	4	1							5
32	Canal Flats	2		1				1		4
105	Francis Creek	2				1	1			4
109	Kinbasket Lakes	2		2						4
27	Bobby Burns Creek	2		1						3
31	Horsethief Creek	2	1							3
33	Spillmacheen	2		1						3
75	Toby Creek	1			1				1	3
132	Cleland Lake	2		1						3
136	Templeton Falls	3								3
149	Lake Lillian	3								3
151	Nixon Lake	2		1						3
152	Mitten Lake	2		1						3
172	Halgrave Lake	3								3
177	Twin Lakes	1		1						3
21	Golden	1				1				2
131	Waitabit Creek	2								2
139	Foster Creek	1		1						2
173	Langs Lake	2								2
178	Steamboat Lake	2								2
185	Rocky Point Lake	1	1							2
39	Jumbo Creek	1								1
102	Invermere							1		1
150	Hall Lake			1						1
273	Kicking Horse River	1								1
TOTAL		120	14	42	4	7	6	10	5	208

APPENDIX 2: TIME PERIOD FOR FISHING

ID	Place	1990	1980	1970	1960	1950	1940	1930	1920	1910	1900	1890	1880	Earlier
27	Bobby Burns Creek					•	•							
111	Brewer Creek	•	•	•	•	•	•	•						
104	Brisco	•	•	•	•									
32	Canal Flats							•	•	•	•	•	•	•
106	Cartwright Lake													
132	Cleland Lake													
44	Columbia Lake	•	•	•	•	•	•	•	•	•				
42	Columbia River				•	•								
25	Dunbar Creek									•	•	•	•	•
34	Dutch Creek					•								
139	Foster Creek	•	•											
105	Francis Creek													
21	Golden			•	•	•	•	•	•	•	•			
172	Halgrave Lake													
150	Hall Lake													
133	Horse Creek													
31	Horsethief Creek				•	•	•							
102	Invermere													
179	Jade Lake													
39	Jumbo Creek			•	•	•	•	•	•					
273	Kicking Horse River													
109	Kinbasket Lakes													
165	Lake Enid													
149	Lake Lillian													
173	Langs Lake													
152	Mitten Lake													
151	Nixon Lake													
185	Rocky Point Lake													
29	Shuswap Creek													
33	Spillmacheen			•	•	•	•	•	•	•	•	•	•	•
178	Steamboat Lake													
73	Susan Lake		•	•										
136	Templeton Falls													
26	Templeton River	•	•	•	•	•	•	•	•	•	•	•	•	•
75	Toby Creek				•	•								
177	Twin Lake													
131	Waitabit Creek													
115	Windermere Creek													
74	Windermere Lake			•	•	•	•							

APPENDIX 3: INTERVIEW RESULTS (PLACES AND ACTIVITIES) ASSOCIATED WITH CVTC

Place ID	Place	Ceremony	Recreation	Material Collection	Medicinal Collection	Habitat	Food
21	Golden	•					•
25	Dunbar Creek						•
26	Templeton River			•			•
27	Bobby Burns Creek			•			•
28	Purcell Mountains				•		•
31	Horsethief Creek		•			•	•
42	Columbia River			•			•
47	Wilmer						•
72	Steamboat Mountain						•
75	Toby Creek						•
105	Frances Creek						•
106	Cartwright Lake						•
110	Bugaboo Creek			•			•
132	Cleland Lake						•
133	Horse Creek						•
139	Foster Creek						•
149	Lake Lillian						•
151	Nixon Lake						•
152	Mitten Lake						•
153	Castor Creek						•
165	Lake Enid						•
172	Holgrave Lake						•
173	Langs Lake						•
177	Twin Lakes						•
178	Steamboat Lake						•
179	Jade Lake						•
185	Rocky Point Lake						•
273	Kicking Horse River					•	•